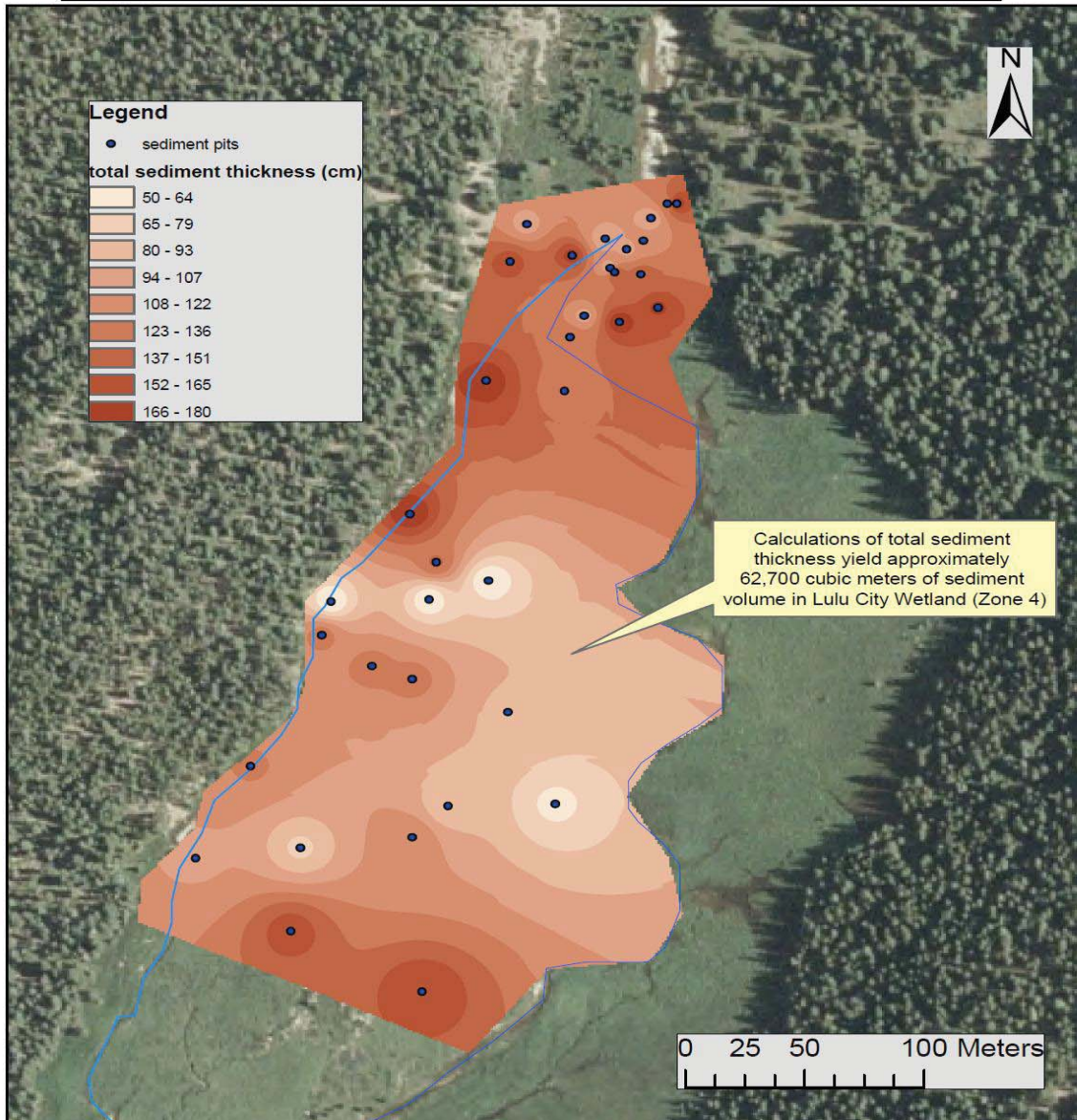


Map prepared by Covey Potter, January 2011. Data Collected by Dr. David Cooper 2005 and Dr. David Cooper and Covey Potter 2009. Projection: UTM NAD 83 zone 13N.

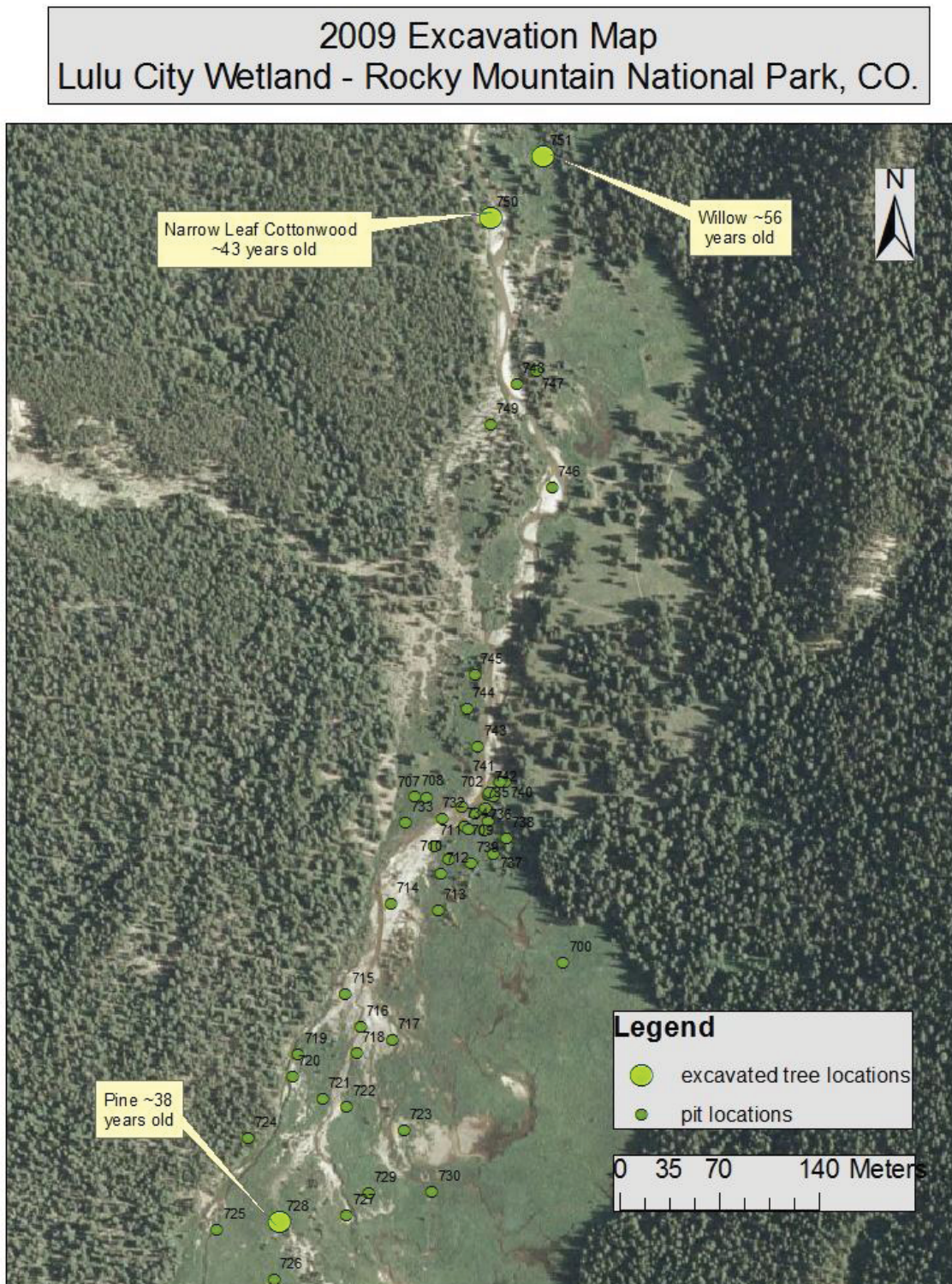
Figure 1: Approximate 2003 breach debris event sediment thickness and volume. Collected by 2004 hand-dug pits and 2009 Bobcat excavator pits. Darker areas represent a greater thickness of 2003 sediment deposition along the northwest region of Lulu City Wetland. 2003 sediment deposition estimates in Lulu City Wetland are approximately 12,200 cubic meters.

Total Sediment Thickness. Lulu City Wetland. Rocky Mountain National Park, CO.



Map prepared by Covey Potter February 2011. Data Collected by Dr. David Cooper and Covey Potter September 2009. Projection: NAD 83 UTM Zone 13N.

Figure 2: Approximate total sediment thickness and volume in Lulu City Wetland, RMNP. Collected by 2009 Bobcat excavator pits. Darker areas represent a greater thickness of total sediment deposition along the northwest region of Lulu City Wetland. Sediment volume estimates for the multiple ditch-related debris events of the past 80 years are approximately 62,700 cubic meters in Lulu City Wetland.



Map prepared by Covey Potter February 2011. Data collected by Dr. David Cooper and Covey Potter September 2009. Projection: NAD 83 UTM zone 13N.

Figure 3: Location map of all sediment pits excavated in September 2009 including the three tree excavation points and approximate germination dates.

Appendix 1: Sediment deposition thickness from 2003 debris event and previous events. Lulu City Wetland – Rocky Mountain National Park, CO

Excavated tree species	Approximate date of germination
<i>Pinus contorta</i>	1971
<i>Populus angustifolia</i>	1966
<i>Salix spp.</i>	1953

Table 1: Approximate date of germination for 3 tree species excavated from the elevated gravel banks of the Colorado River in Zones 3 and 4 – Rocky Mountain National Park, CO