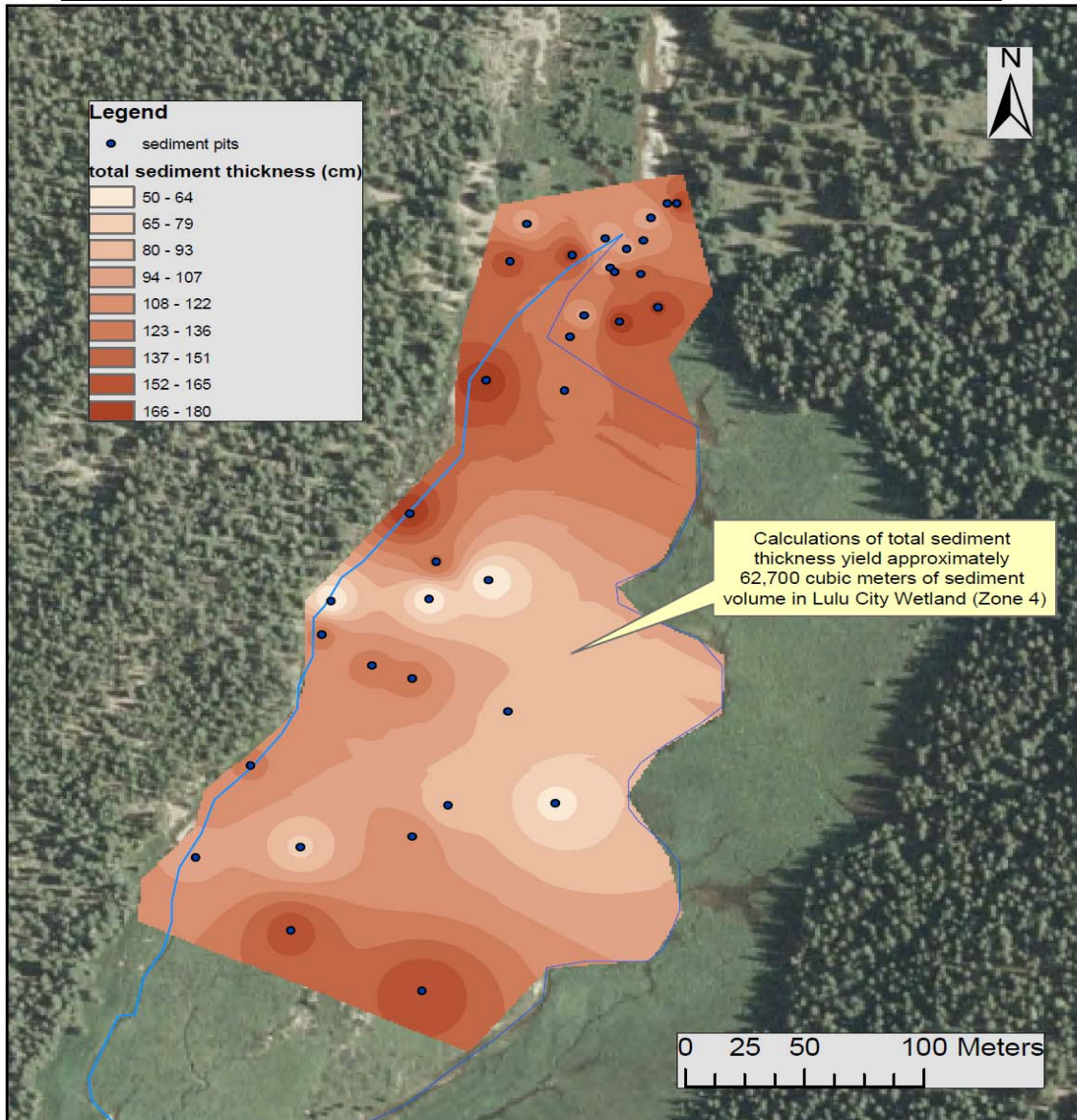


Map prepared by Covey Potter, January 2011. Data Collected by Dr. David Cooper 2005 and Dr. David Cooper and Covey Potter 2009. Projection: UTM NAD 83 zone 13N.

Figure 1: Approximate 2003 breach debris event sediment thickness and volume. Collected by 2004 hand-dug pits and 2009 Bobcat excavator pits. Darker areas represent a greater thickness of 2003 sediment deposition along the northwest region of Lulu City Wetland. 2003 sediment deposition estimates in Lulu City Wetland are approximately 12,200 cubic meters.

### Total Sediment Thickness. Lulu City Wetland. Rocky Mountain National Park, CO.



Map prepared by Covey Potter February 2011. Data Collected by Dr. David Cooper and Covey Potter September 2009. Projection: NAD 83 UTM Zone 13N.

Figure 2: Approximate total sediment thickness and volume in Lulu City Wetland, RMNP. Collected by 2009 Bobcat excavator pits. Darker areas represent a greater thickness of total sediment deposition along the northwest region of Lulu City Wetland. Sediment volume estimates for the multiple ditch-related debris events of the past 80 years are approximately 62,700 cubic meters in Lulu City Wetland.