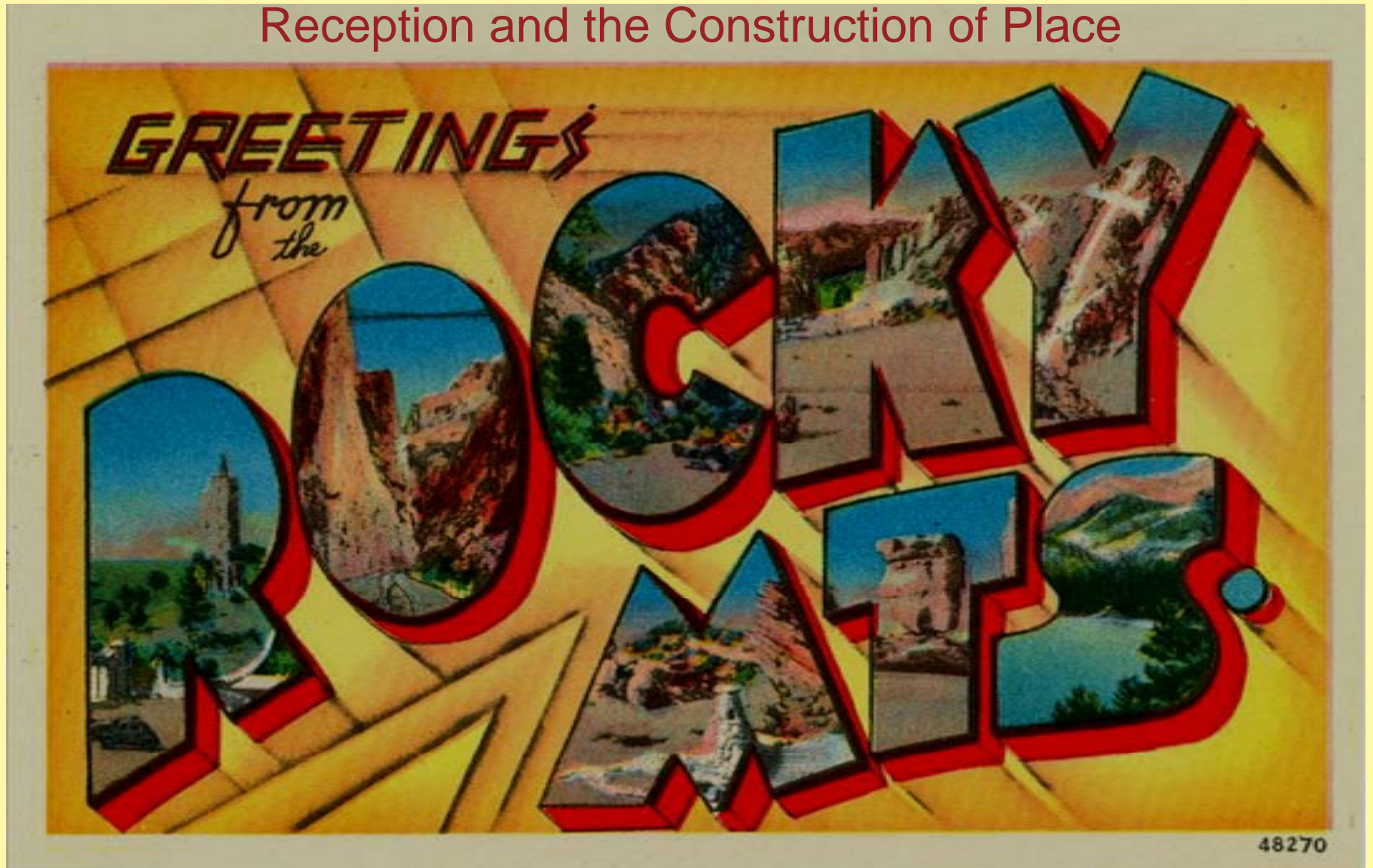


Images of Rocky Mountain: Reception and the Construction of Place



What is reception history?

Horseback Riding GLACIER CREEK - SPRAGUE'S LAKE STABLES

(Sign designating our turn-of-Campground entry—on Bear National Park.)

DAILY RIDING TRIP
in the "heart of the Park."
unsurpassed beauty with he lakes.

This area, set aside forever for it wild life and beautiful flowers. En ways and fences . . . where y

DAILY SCHEDULES -

2 Hour Rides

8 a.m.
10 a.m.

1/2-Day Rides

8 a.m.

One-Hour and all-d

OUTDOOR STEAK FRY & BREAKFAST RIDES WESTERN ENTERTAINMENT

We invite you to come and see us and know our wranglers and horses.

The Van Horn Family
Owners

Don Roberts
Manager



Ruth Herndon's RANCH SHOW



FEATURING PAT HENRY
AND GOLD TONY

*Smartest Horse Anywhere for
Money, Marbes or Chalk*

o stallion, owned by Ruth Herndon, star way, does 40 tricks, and is the only horse ry a rope in his mouth and rope a calf. e-It-Or-Not. Seeing Gold Tony alone is

EVERY SUNDAY

3 p.m.

ESTES PARK, COLORADO

Devil's Gulch Road

Admission \$1, Children 50c

Key eras represented in the reception of the park:

- Pre-park period of settlement
- The designation of the park, 1916
- Auto and train tourism 1920-50s
- Post World War II: The 1950s
- NPS Mission 66
- The Environmental movement
- Active recreation & tourism today

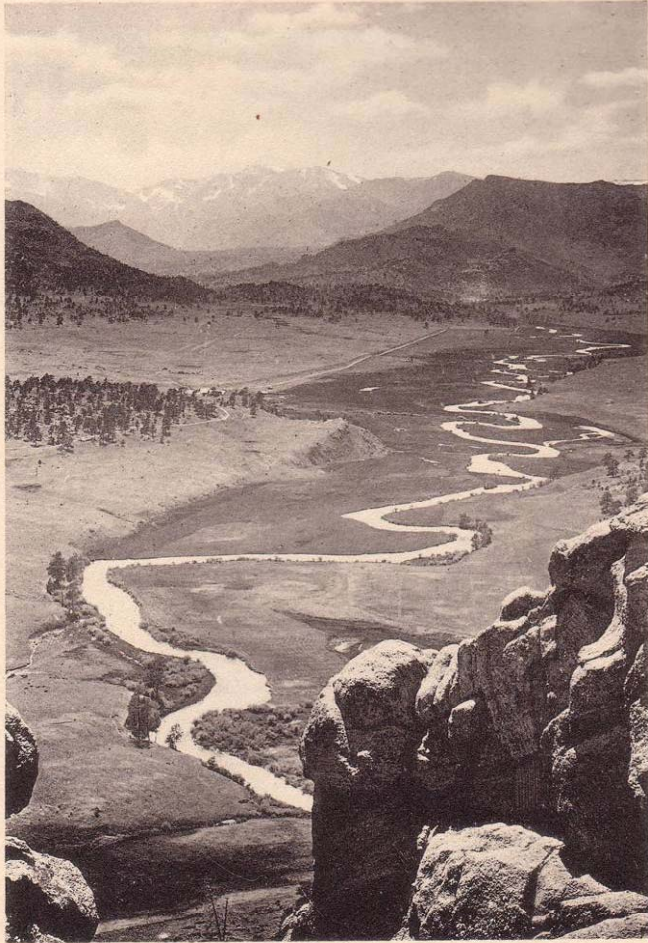


Three key themes arise within the visual record:

- Scenic beauty
- Recreational activities
- Nature and the environment

These themes reflect not only generally construed ideas about place but also tenets of the National Park Service.

Scenic Beauty

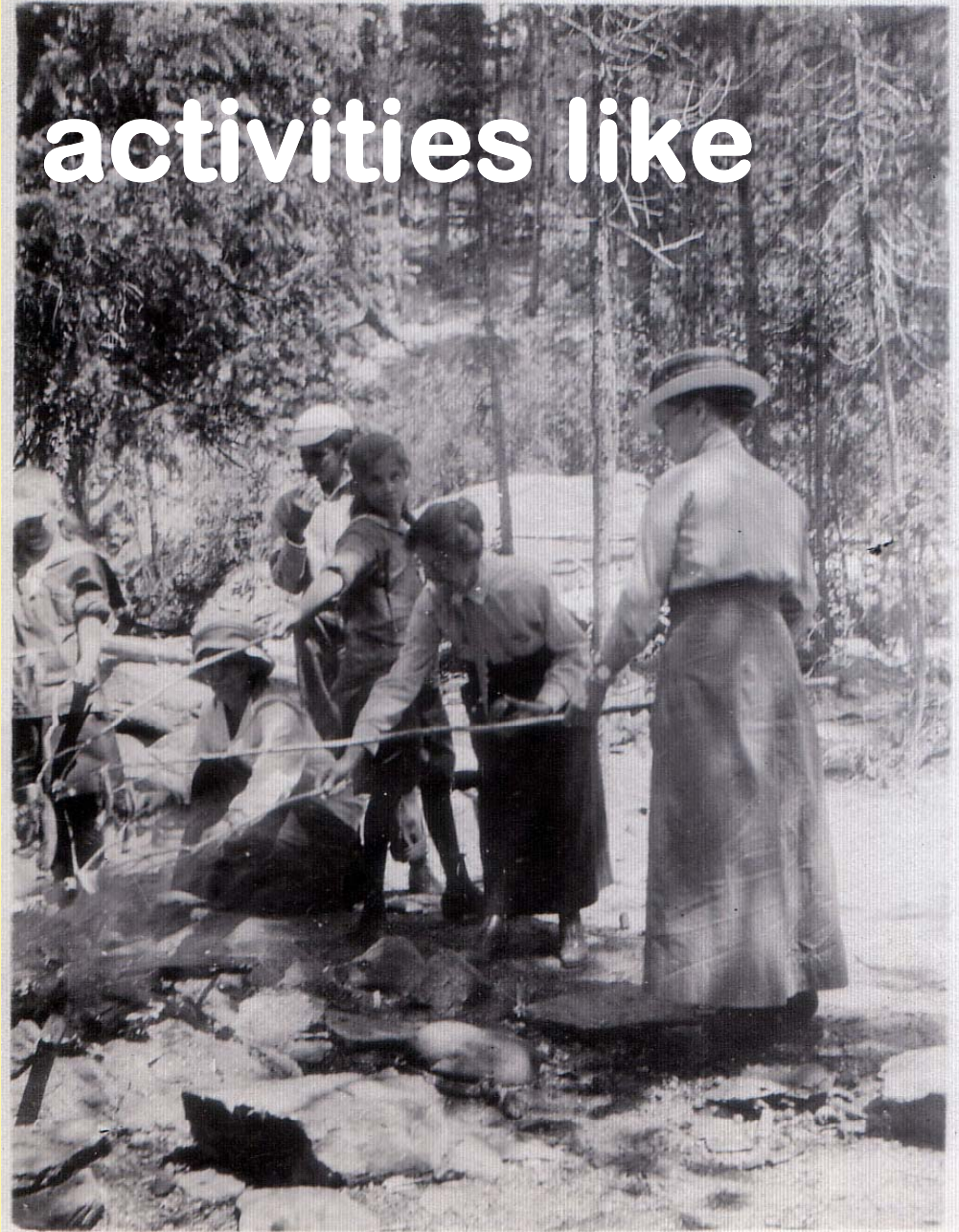


ESTES PARK, FROM MT. OLYMPUS.

is represented as vistas and mountains of the continental divide, as well as through the natural features of rock formations and glaciers, lakes, streams and waterfalls, meadows and glades. It remains one of the most frequent subjects for visitors in Rocky Mountain National Park area.

Recreational activities like

hiking, climbing, hunting and fishing have been part of the visual register since the decades after the Civil War. Also popular were picnics, boating and water sports, especially on Grand Lake, and so too are selected winter sports. As a way of experiencing the park, recreational activities remain popular and continue to be a draw for visitors, who place themselves and others into the park as subjects of the images.



Natural and environmental history

is present in the many images of fauna, flora and sylvia. Of special relevance are the iconic symbols of Rocky Mountain National Park and the Rocky mountain regions: bighorn sheep and elk herds, columbines and other wildflowers, and forests of aspen, spruce and pine. In this sense, these natural elements constitute part of the scenic beauty.



William H. Jackson's photograph of Longs Peak from Prospect Mountain exemplifies 19th century scenic ideals



William Henry Jackson



“Long’s Peak” by Albert Bierstadt, 1877. Courtesy Denver Public Library



Longs Peak and the Estes Park valley

Scenic water features



Souvenir image book

Photographs and production
by W. T. Parke of Estes Park

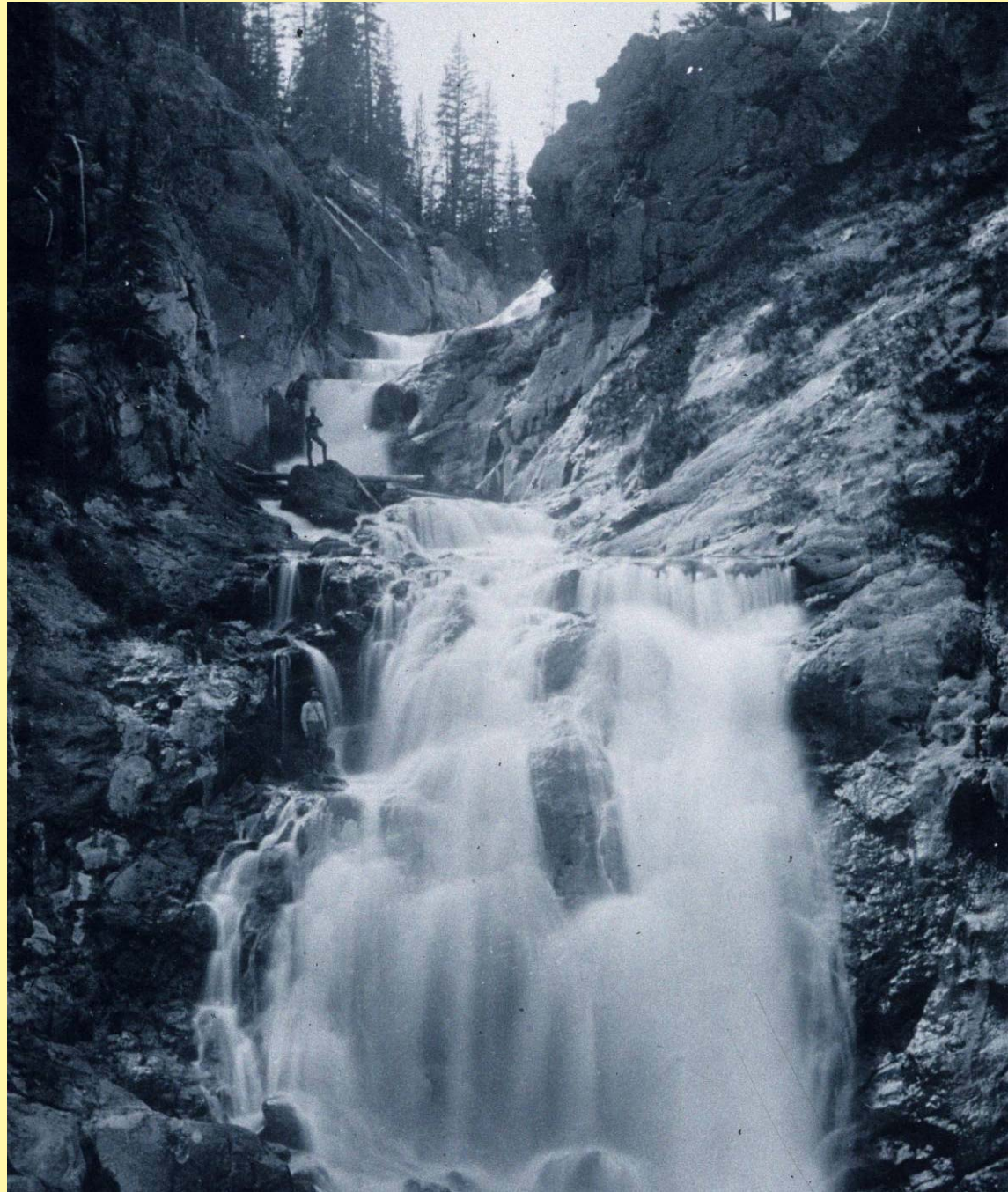


HORSE SHOE FALLS.

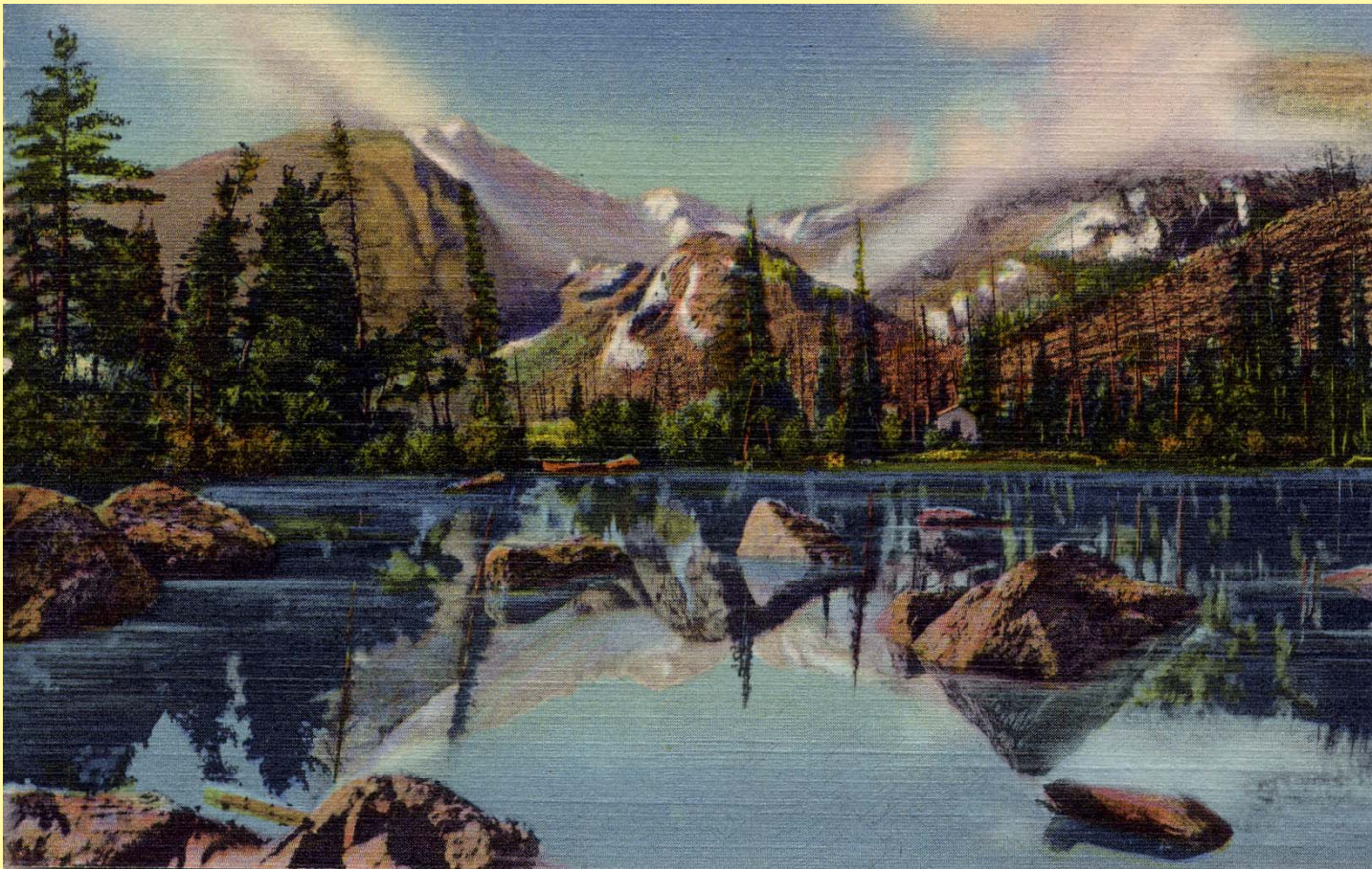


BIERSTEADT LAKE. COLO.

Silver gelatin "art print" by Estes Park photographer W. T. Parke







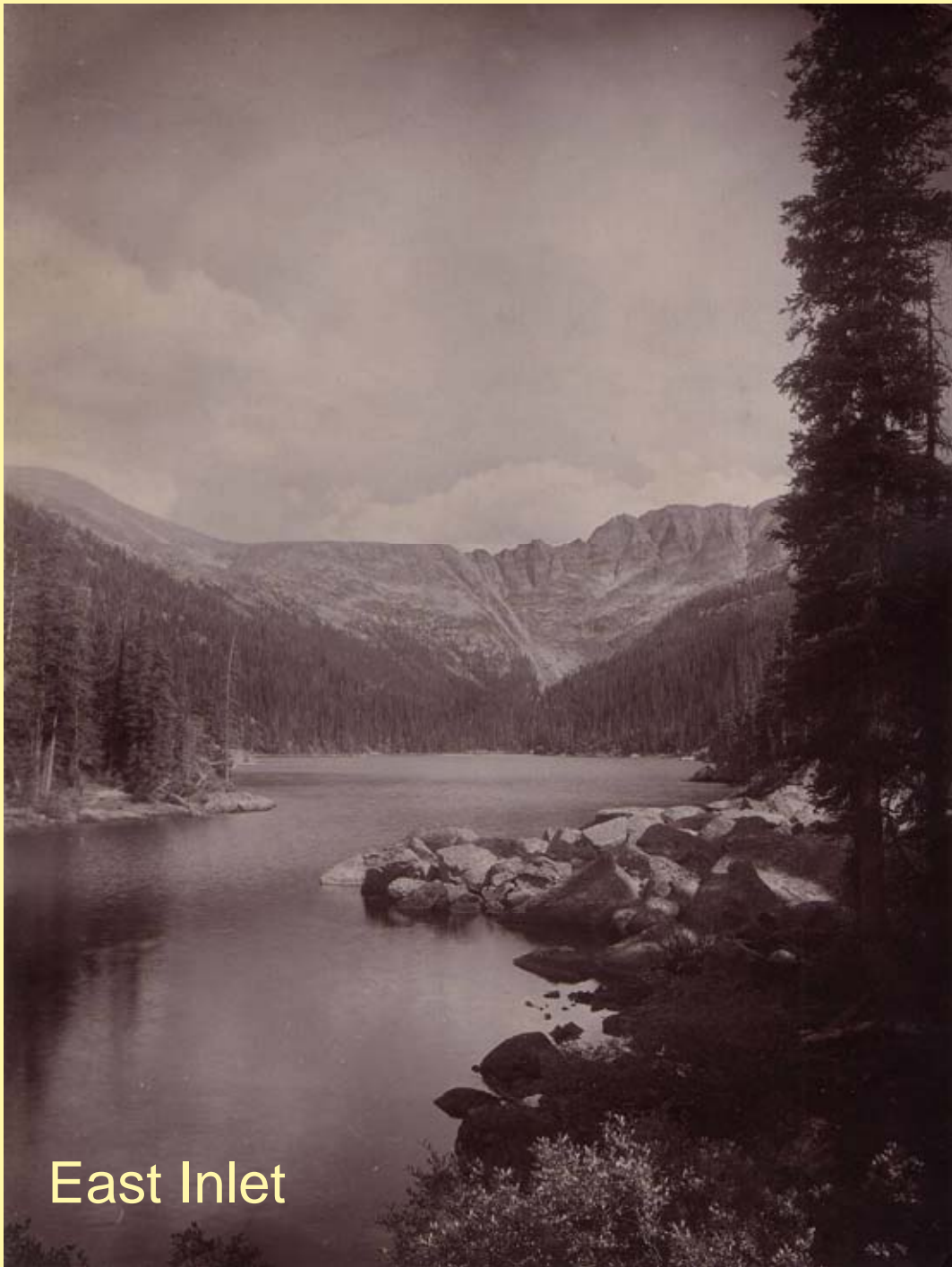
BEAR LAKE
 Dear Cecil & Paula,
 2205—BEAR LAKE, (ALT. 9,550 FT.)
 AND GLACIER GORGE,
 ROCKY MOUNTAIN NATIONAL PARK, COLO.
 Kate & I brought Pat
 & Jim here for the
 month of July and
 are really enjoying
 the mountains &
 scenery. The children
 are learning to
 ride and having a
 fine time. Thank
 Cecil for sending
 them the stamps. I'll
 write a letter soon.
 Love Marian

POST CARD
 Mrs. Mrs. C.C. McKay
 520 Castle
 Geneva
 New York

UNITED STATES POST OFFICE
 DENVER, COLO.
 1

"MTC-CO-020304", "SAGREB NATION CO.", DENVER, COLO.

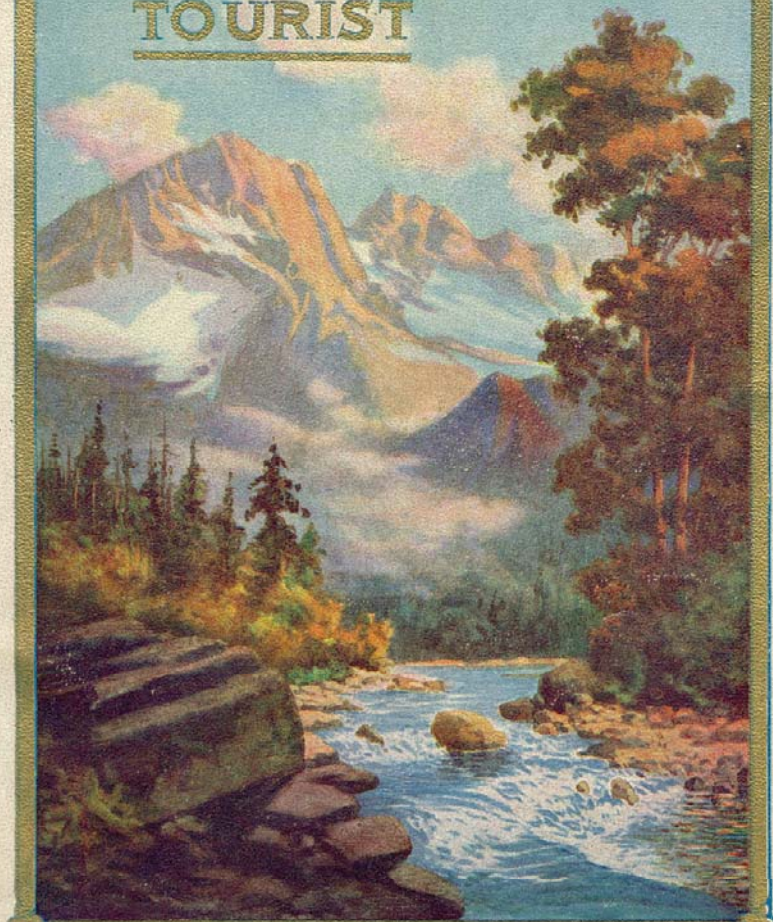
85.41.169



Spirit Lake East Inlet

COLORADO

FOR THE
TOURIST

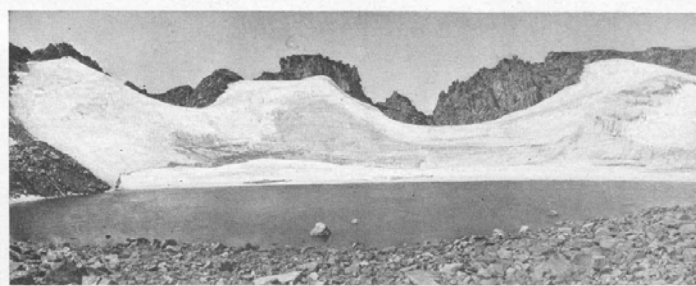


Printed in 1911

COLORADO FOR THE TOURIST

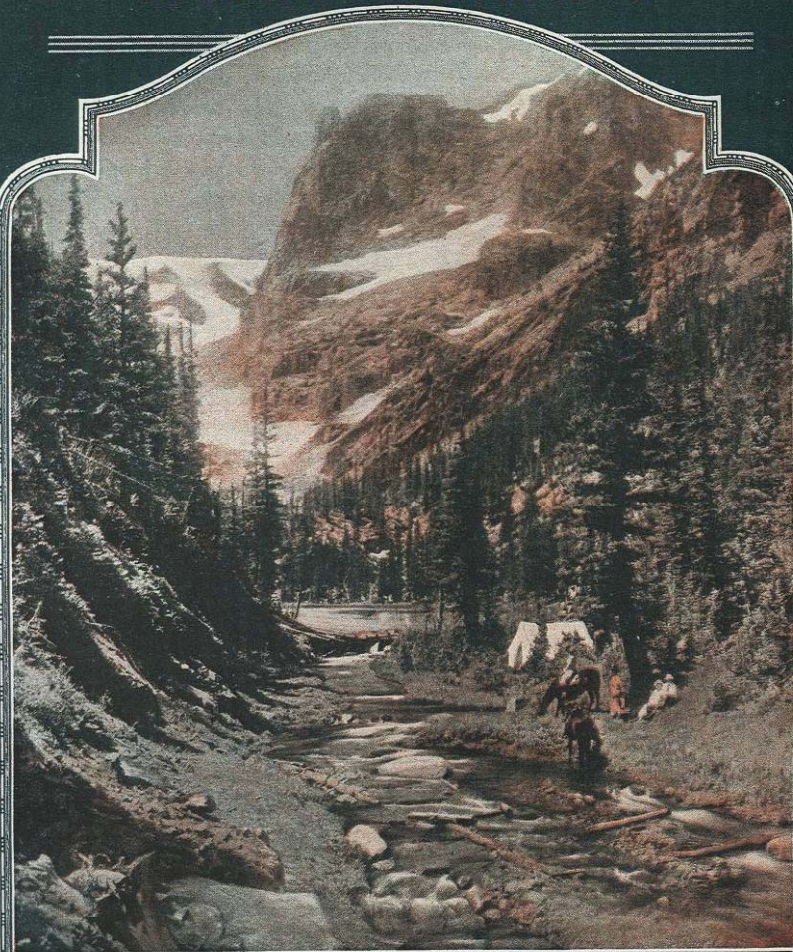


Long's Peak, in Estes Park, is 14,300 feet high, and is the mecca of climbing parties. It possesses a hanging chasm 2,800 feet sheer, said to be the highest known. Slow-moving glaciers and everlasting snow add to the beauties of this mountain. The upper picture shows Long's Peak from one of the splendid roads in the park and below is a glacier, easily accessible to mountaineering parties

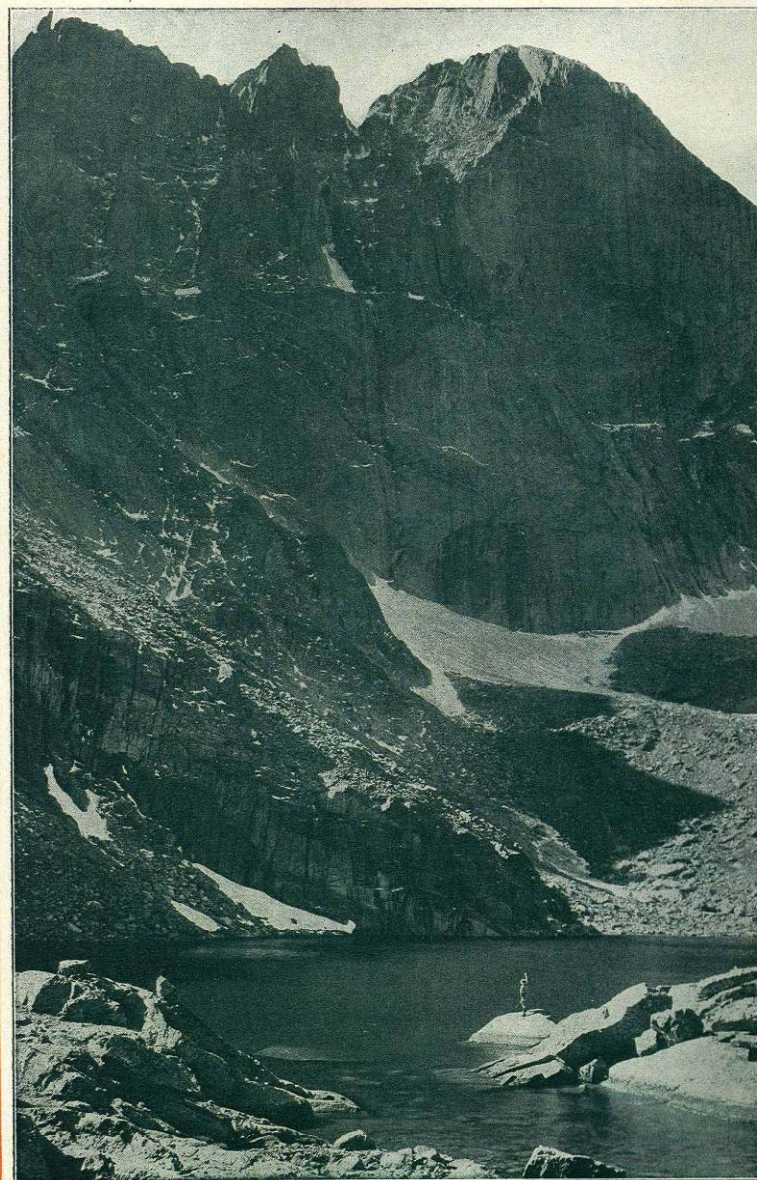


ROCKY MOUNTAIN

National Park
COLORADO



UNITED STATES RAILROAD ADMINISTRATION
NATIONAL PARK SERIES

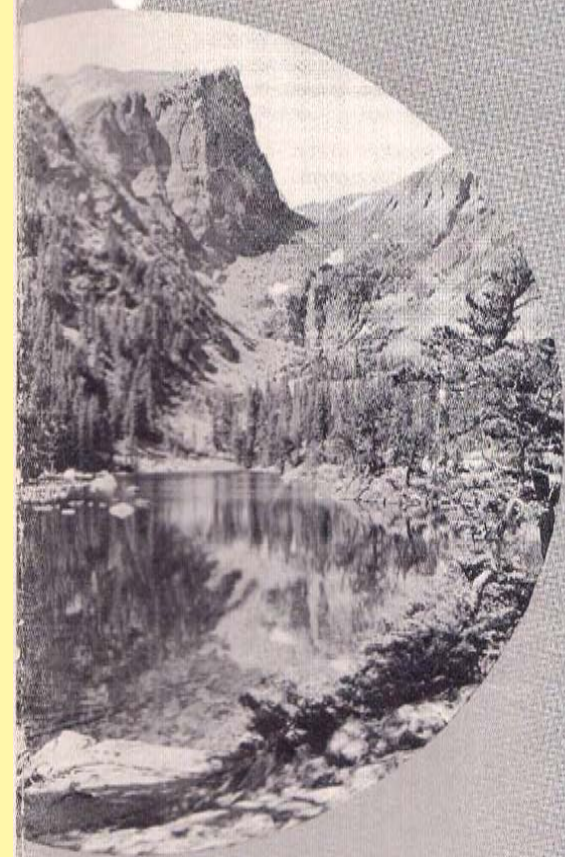


"What is Man, that Thou Art Mindful of Him?"
The original site of a mammoth glacier which ate into the granite heart of Long's Peak

ROCKY
MOUNTAIN
NATIONAL PARK

*Its
First Fifty
Years*

1915-1965



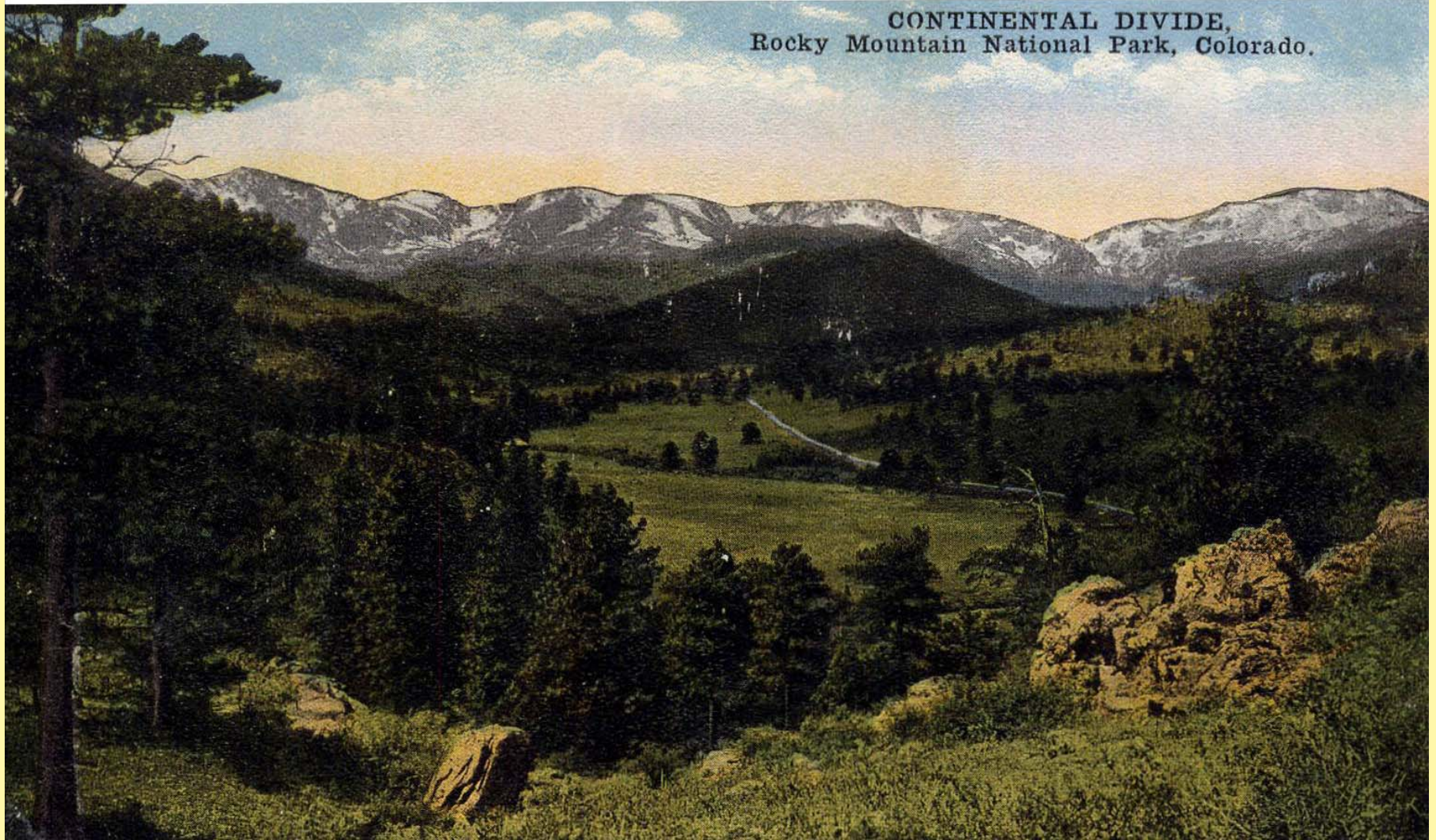
**Rocky
Mountain**

National Park

COLORADO

ROMO 2 1960

CONTINENTAL DIVIDE,
Rocky Mountain National Park, Colorado.



Access to the park supports the possibility of confirming an anticipated experience.

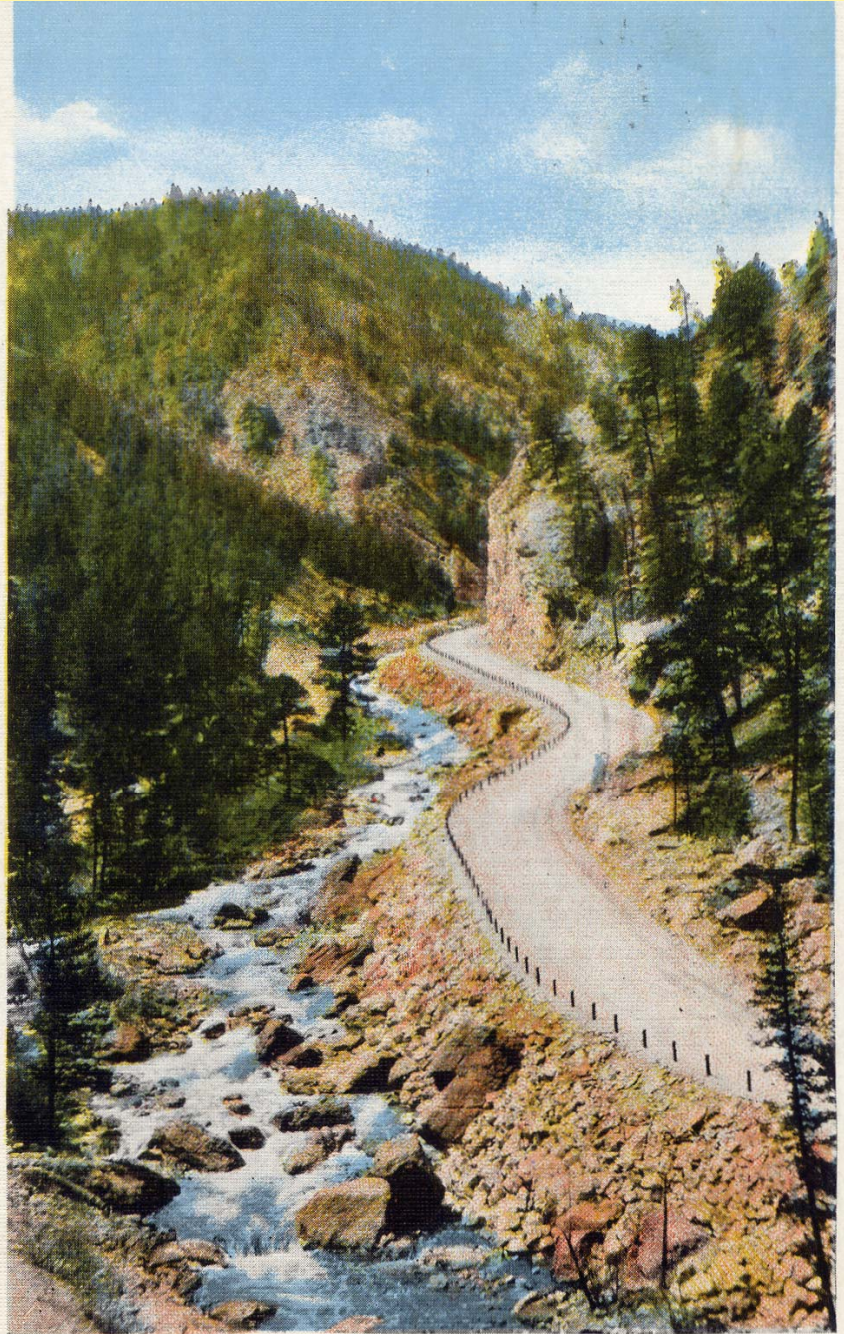
- Early roads, and the Stanley Steamer
- Automobile touring, including the Denver Mountain Parks loop
- Railroads
- Bus tours and sightseeing
- Hiking, once within the park





8A5-M

Highway to Estes Park and Rocky Mountain National Park, Colorado



ROCKY MOUNTAIN NATIONAL PARK

5A252

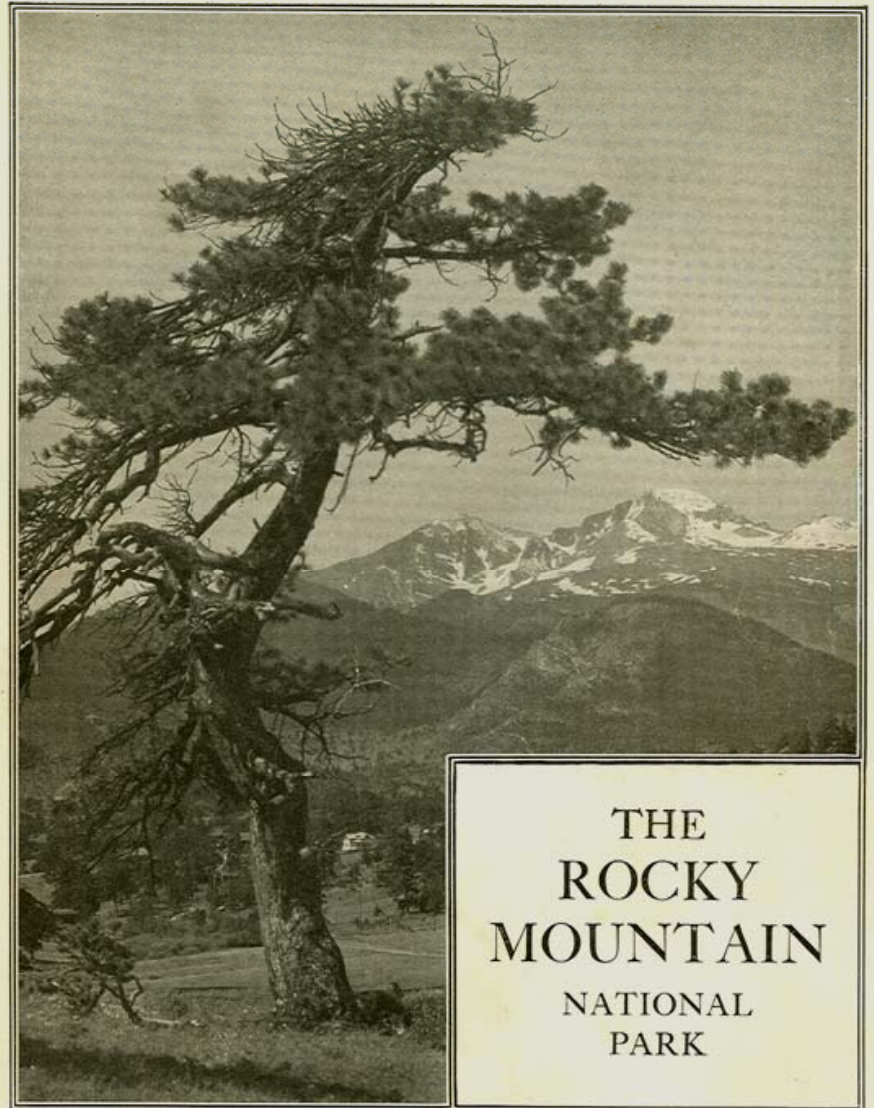


The railroads played a large role in tourism and reception.

NATIONAL PARKS PORTFOLIO



DEPARTMENT OF THE
INTERIOR



THE
ROCKY
MOUNTAIN
NATIONAL
PARK

Photograph by W. S. Wall

DEPARTMENT OF THE INTERIOR

FRANKLIN K. LANE, *Secretary*

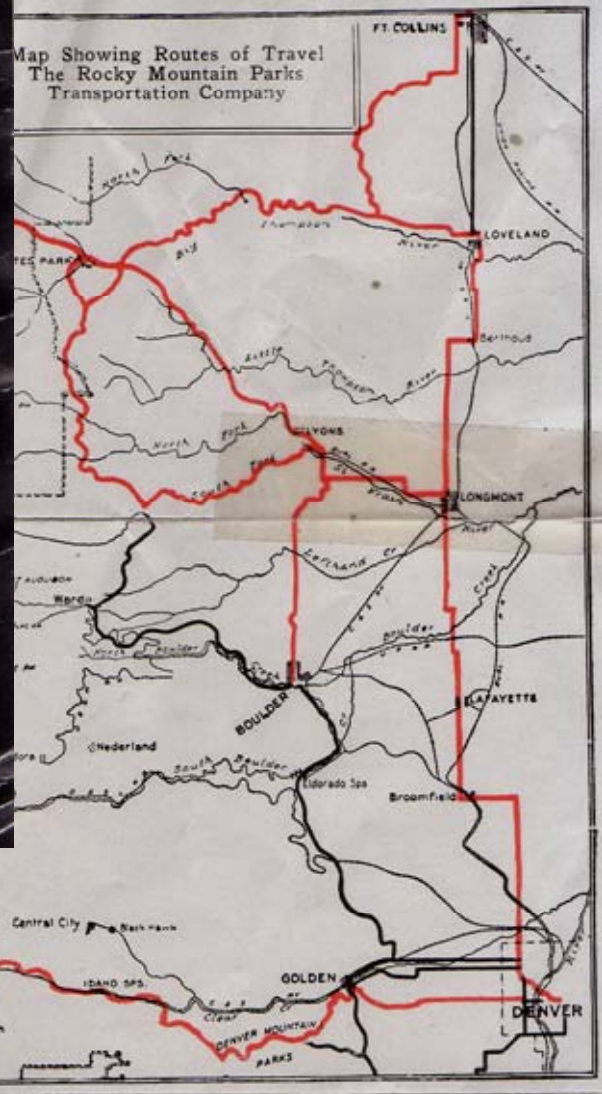
ROCKY MOUNTAIN NATIONAL PARK ESTES PARK

917.3
RMNP

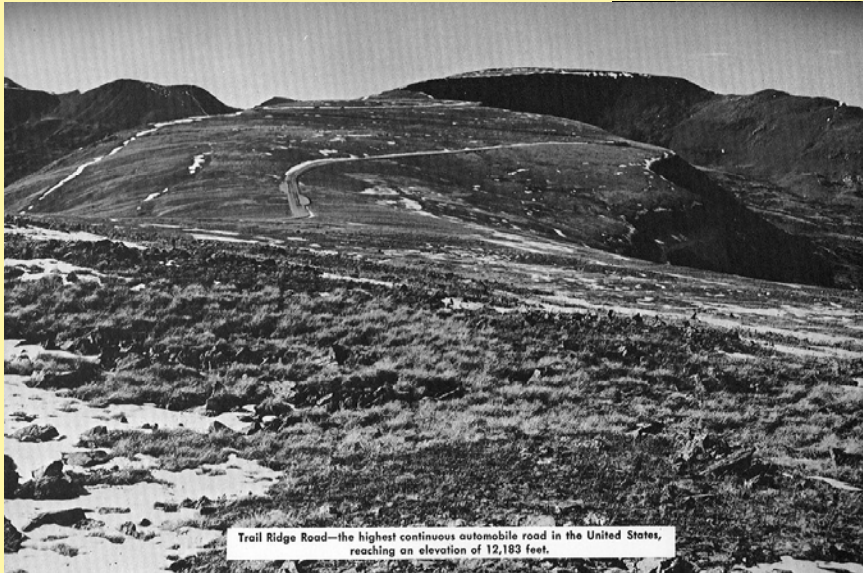
Season
1920

The ROCKY MOUNTAIN PARKS TRANSPORTATION CO.

Map Showing Routes of Travel
The Rocky Mountain Parks
Transportation Company



ROCKY MOUNTAIN NATIONAL PARK
LIBRARY
#6412
ESTES PARK, COLORADO



Trail Ridge Road—the highest continuous automobile road in the United States, reaching an elevation of 12,183 feet.

Trail Ridge Road
"Remember Your Trip With Pictures"



Looking East on Trail Ridge Road
 August 12, 1928, Estes Park, Colo.

Trail Ridge Road (beg. 1932)
 Photo Album sheet, 1944



Turnpike Curves



Looking West on the Trail Ridge Road



F. J. FRANCIS FALL RIVER ROAD R. M. NATIONAL PARK Aug. 12-1928 ESTES PARK, COLO.

Fall River Road (1913-20)
 Postcard ca. 1928

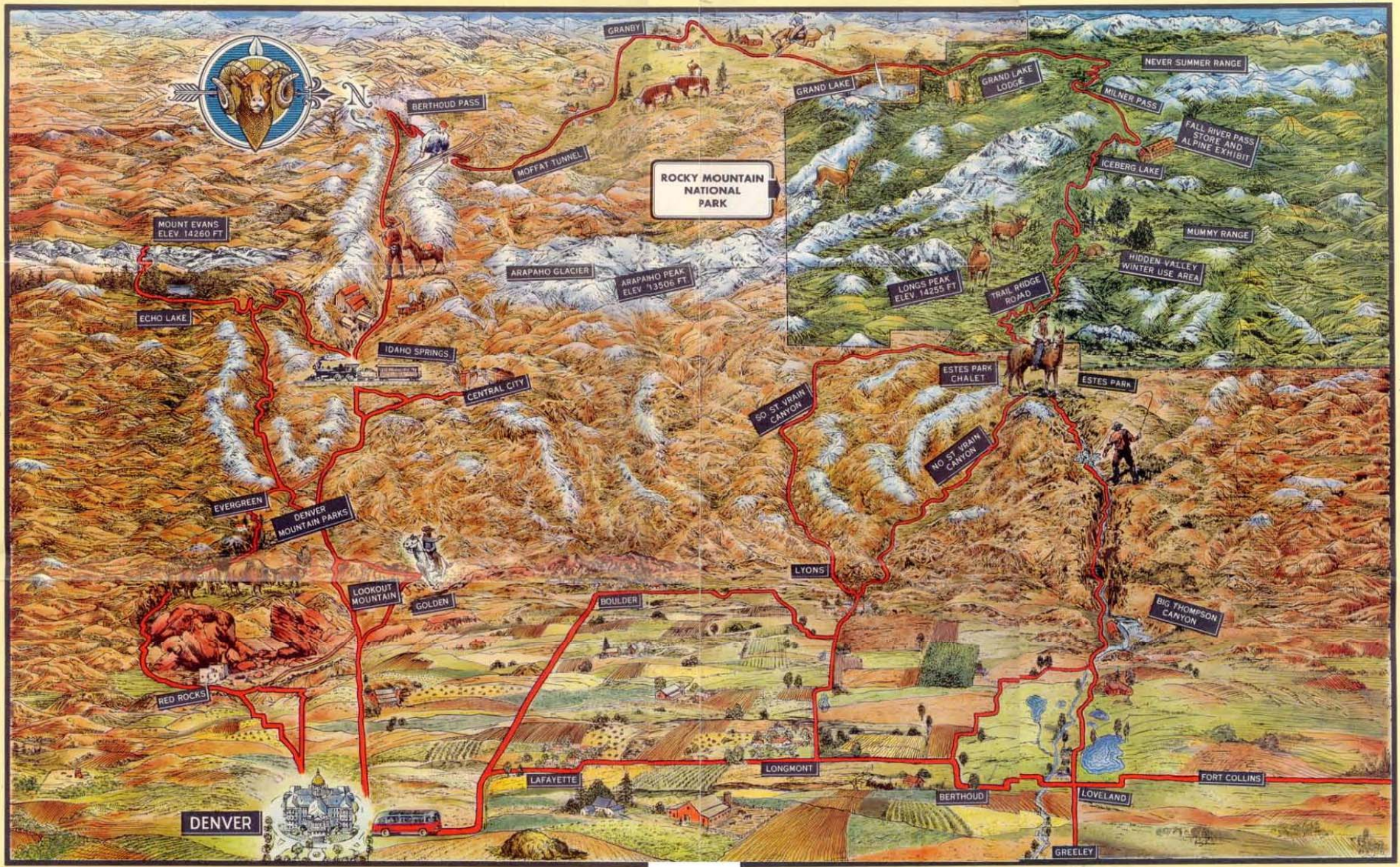


Big Rock on Trail Ridge Road



SCENE ON THE WESTERN SLOPE OF THE TRAIL RIDGE ROAD - BERRY (M. W.) PHOTO CO. - ESTES PARK, COLO.

MOTOR TOURS TO ROCKY MOUNTAIN NATIONAL PARK AND DENVER MOUNTAIN PARKS



**MOTOR TOURS IN AND ABOUT
ROCKY MOUNTAIN NATIONAL PARK**

Grand Lake Lodge — Capacity 275
Estes Park Chalet — Capacity 250
American and European Plan

ESTES PARK TO GRAND LAKE

Via Trail Ridge, Fall River Pass and Continental Divide
Read Down 9:00 AM 2:30 PM Lv Estes Park Ar 5:30 PM
12 Noon 5:30 PM Ar Grand Lake Lv 2:30 PM
Fare—Round Trip \$8.00 Fare—One way \$5.00

TRAIL RIDGE - FALL RIVER PASS

8:30 AM and 2:00 PM Lv Estes Park
12 Noon and 5:30 PM Ar Estes Park Fare—\$5.00

NATIONAL PARK SCENIC CIRCLE

8:30 AM and 2:00 PM Lv Estes Park
11:50 AM and 5:15 PM Ar Estes Park Fare—\$3.60

BEAR LAKE

8:30 AM and 2:00 PM Lv Estes Park
11:50 AM and 5:15 PM Ar Estes Park Fare—\$2.00

LONGS PEAK

(Fare—Round Trip \$2.00)
Leave Estes Park 7:00 AM and 5:00 PM
Leave Longs Peak 8:00 AM and 4:00 PM

**MOTOR TOURS IN
DENVER MOUNTAIN PARKS SYSTEM**

MOUNT EVANS - CENTRAL CITY

14,260 Feet Above Sea Level
Highest Automobile Road in North America
June 10 to September 16
Leave Denver at 9:00 AM, return at 5:30 PM
Stop for luncheon at Echo Lake Bus Fare \$8.00

DENVER MOUNTAIN PARKS

A Circle Tour of 65 Miles, including
Lookout Mountain, Red Rocks Park and Bear Creek Canyon
9:15 AM Lv Denver (via Bear Creek) Ar 1:15 PM
2:15 PM Lv Denver (via Lookout Mountain) Ar 6:15 PM
Year Around Service Bus Fare—\$4.00

DENVER CITY TRIP

One hour and thirty minutes Bus Fare—\$1.50
June 10 to September 16
Lv. 9:00 AM, 11:00 AM, 2:00 PM, 4:00 PM
September 16 to June 10 Leave 10:00 AM and 2:00 PM

Issued 1955. COLORADO TRANSPORTATION COMPANY d/b/a Rocky Mountain Motor Co. is authorized by the United States Government to serve the public in Rocky Mountain National Park. All fares are subject to Federal Transportation Tax.

LITHOGRAPHED IN U.S.A.

PIKES PEAK LITHOGRAPHING CO.

SIGHTSEEING TOURS
IN GLASS TOP BUSES THROUGH

**ROCKY MOUNTAIN
NATIONAL PARK**

ESTES PARK • GRAND LAKE

**ROCKY MOUNTAIN
MOTOR COMPANY**
DENVER 1, COLORADO



ROCKY MOUNTAIN NATIONAL PARK

Estes Park and Grand Lake

THE town of Estes Park, situated at the eastern entrance of Rocky Mountain National Park, and the town of Grand Lake, at the western entrance, are substantial communities where seasonal activities are centered during the summer months.

- At both you will find desirable living accommodations in considerable variety; they embrace American and European Plan hotels, Dude Ranches, Cottage Camps and furnished housekeeping cottages. Some of these are right in town, while others are located at varying distances in the mountains. Consult your travel bureau concerning these facilities.

- You will find convenience in buying a ticket direct from your home city to Estes Park or Rocky Mountain National Park; just ask your ticket agent to include coupons for the bus trip from Denver to the parks.

- The buses used in this service are built especially for vacation tours in the mountains; comfortable and with plenty of power.

DENVER UNION BUS DEPOT

TOUR BOTT.
501 E. 35th
DENVER, COLORADO
N.W. BLDG. 20246

Print Cover, Clatworthy Kodachrome
Roma 20246

Boutellier

SIGHTSEEING TOURS THROUGH

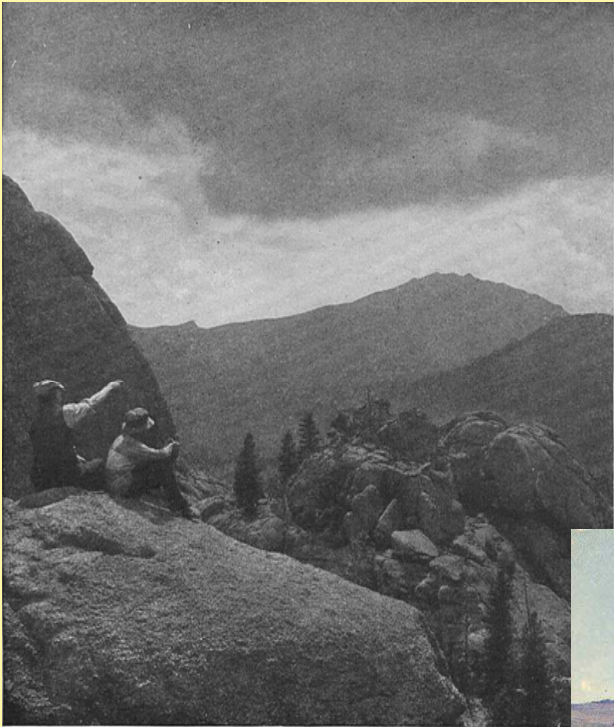
**Rocky Mountain
National Park**

ESTES PARK • GRAND LAKE
COLORADO

**ROCKY MOUNTAIN
MOTOR COMPANY**

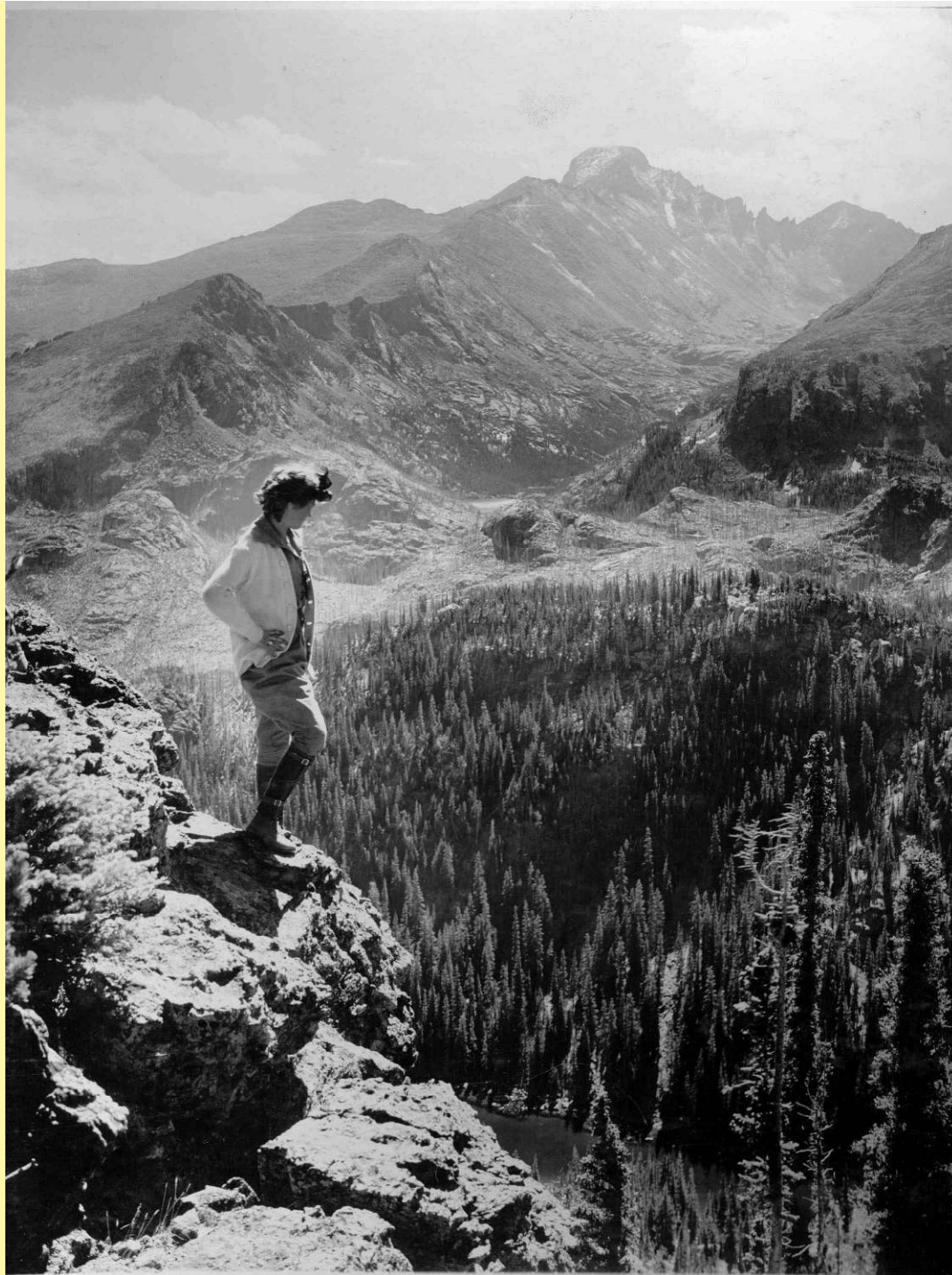
DENVER, COLORADO

Recreational activities include "looking" at the park from various vantage points

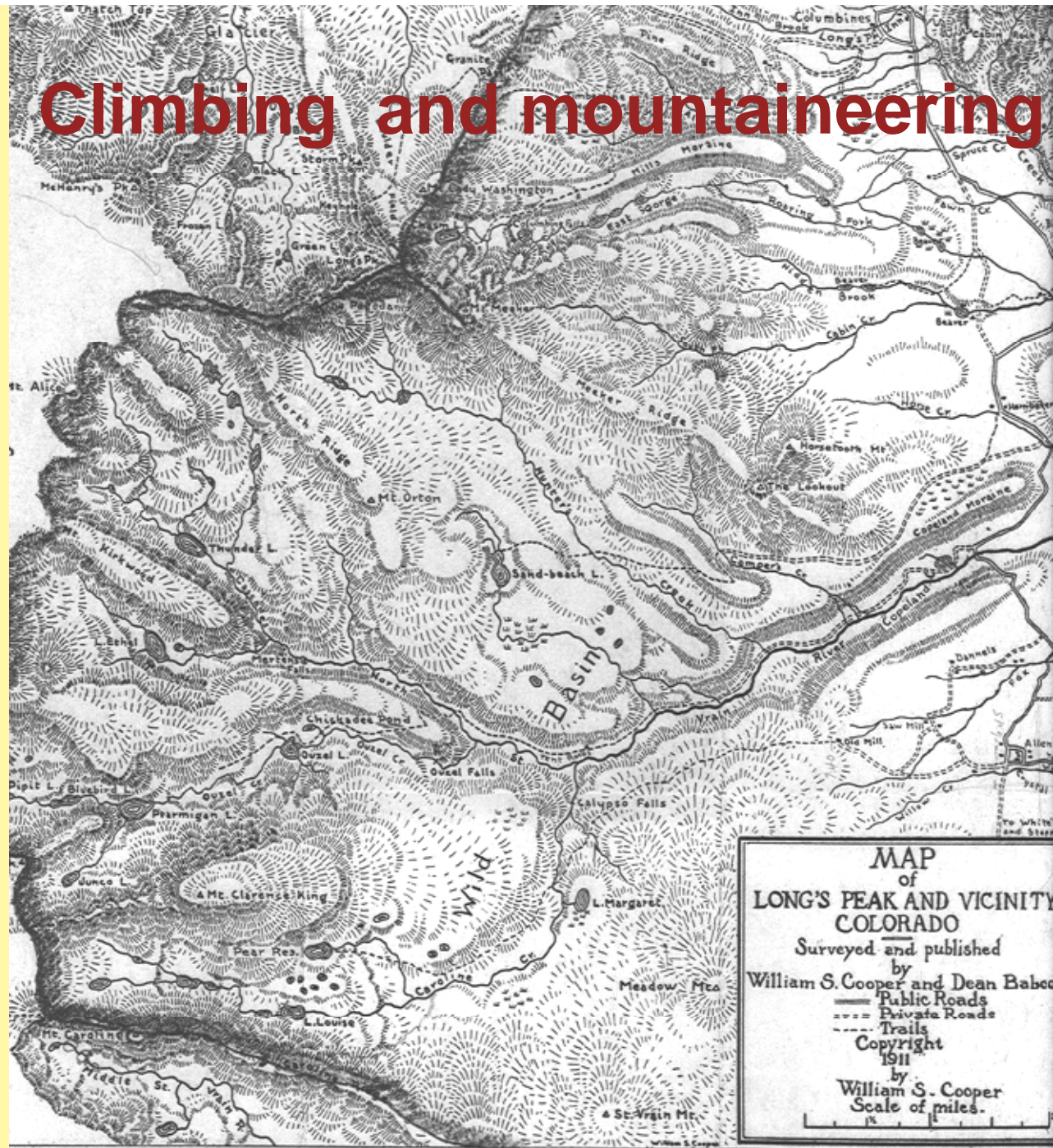


LOOKING INTO THE PARK FROM THE TWIN SISTERS



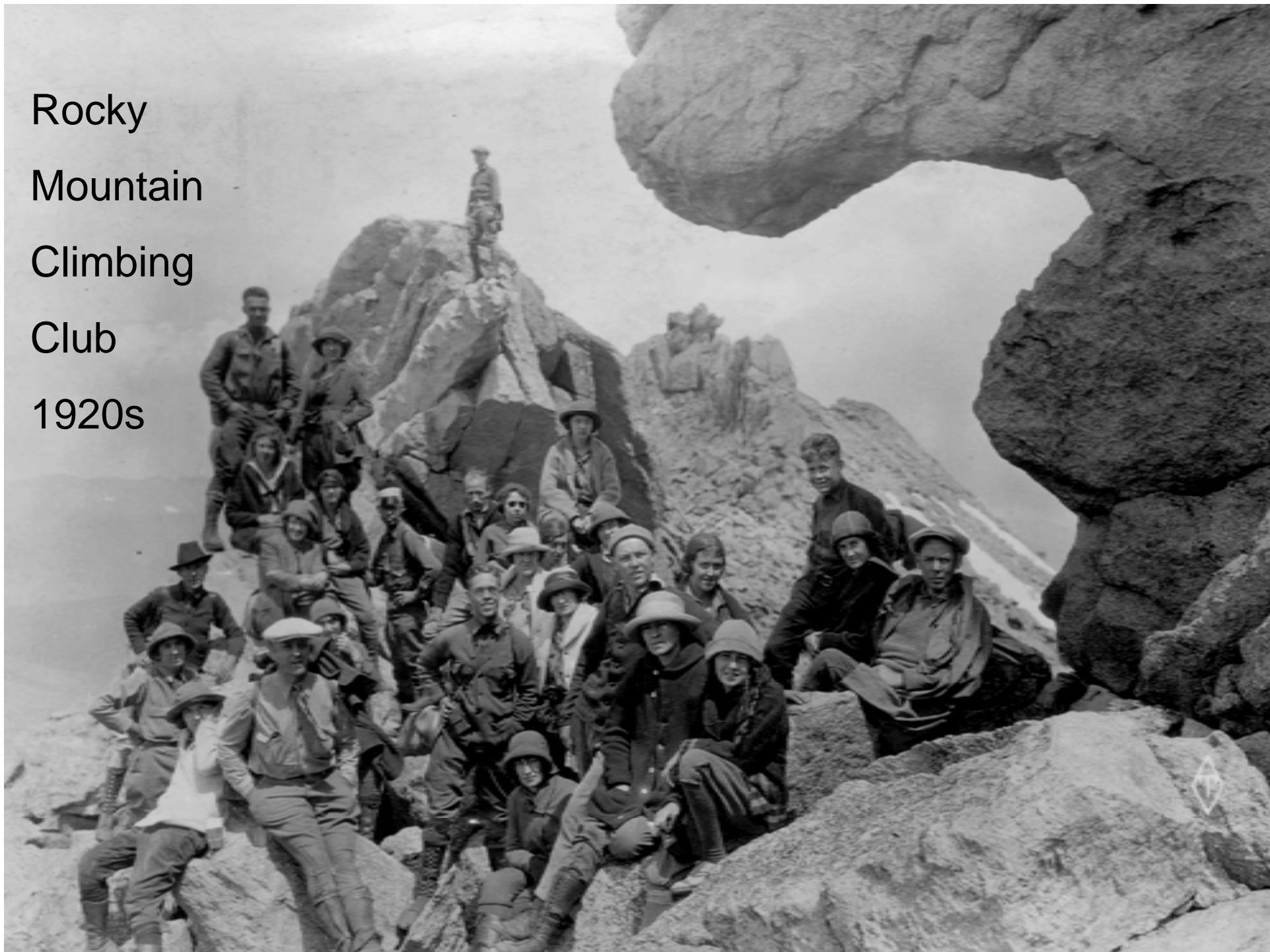


Climbing and mountaineering



Upper Watershed of North St. Vrain River Colo.

Rocky
Mountain
Climbing
Club
1920s







SKI

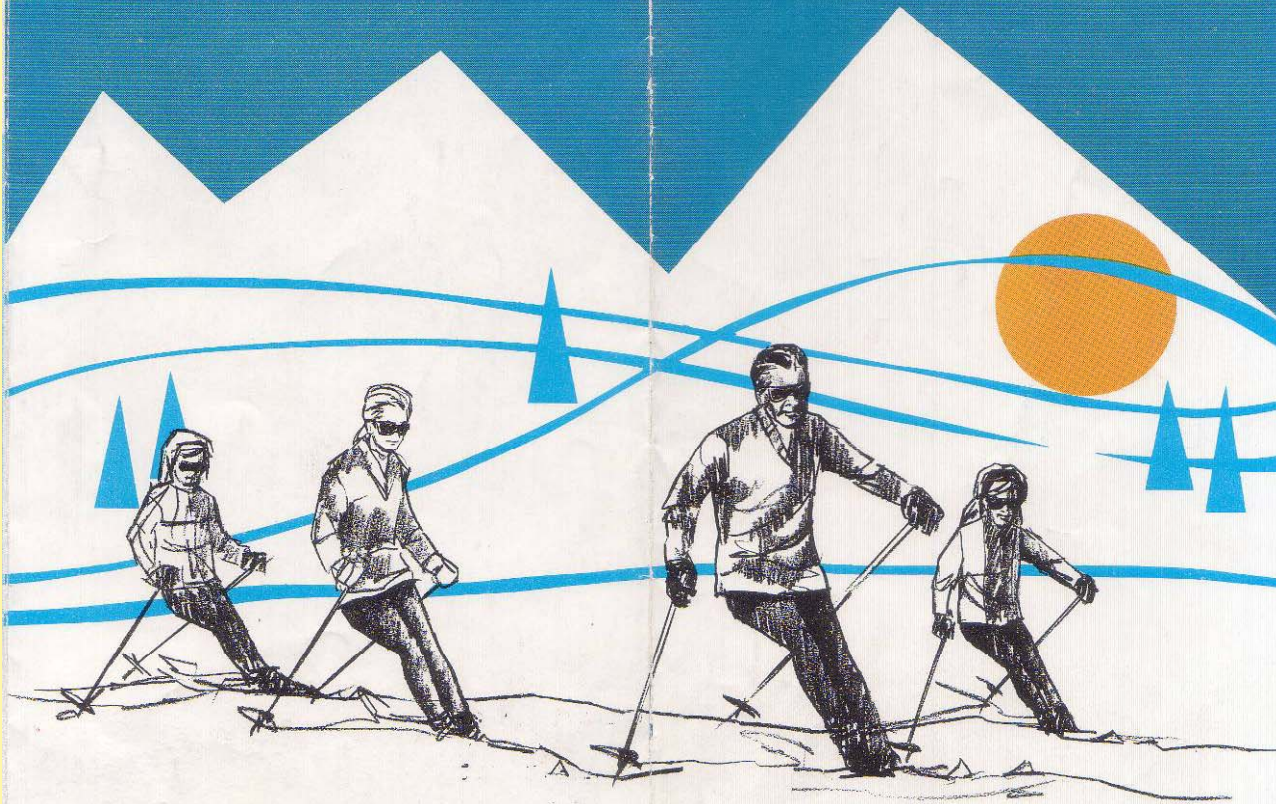


HIDDEN VALLEY

SKI



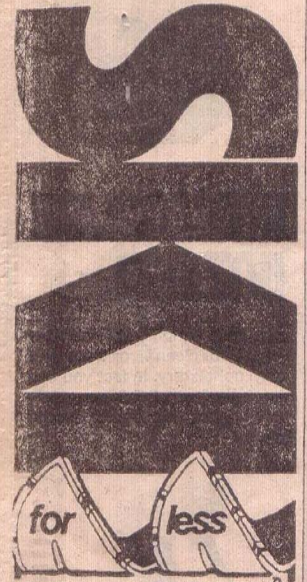
HIDDEN VALLEY



10 Miles West **ESTES PARK, COLORADO** IN RKY. MTN. NATL. PARK

10 Miles West **ESTES PARK, COLORADO** IN RKY. MTN. NATL. PARK

THE DENVER POST Thurs., March 6, 1975



for less

Clip and show for a day in the snow.
All day lift ticket

\$4.50

with this coupon.

HIDDEN VALLEY

10 miles west of Estes Park
in the Rocky Mtn. National Park

DESIGNED FOR FAMILY WINTER SPORTS

WINTER SPORT ACTIVITIES



SKIING—our foremost activity with a full variety of slopes, trails and powder skiing. 1800 feet of vertical drop, two Hall T-Bars; the lower T-Bar 3000 feet, the upper 2200 feet. A 700 foot POMA lift and two 300 foot rope tows. A unique shuttle bus system to take skiers in warm comfort from lower Hidden Valley to Upper Hidden Valley.

SKATING—a fun rink with a good maintained surface.

TUBE SLIDING—a safe, thrilling adventure for the entire family.

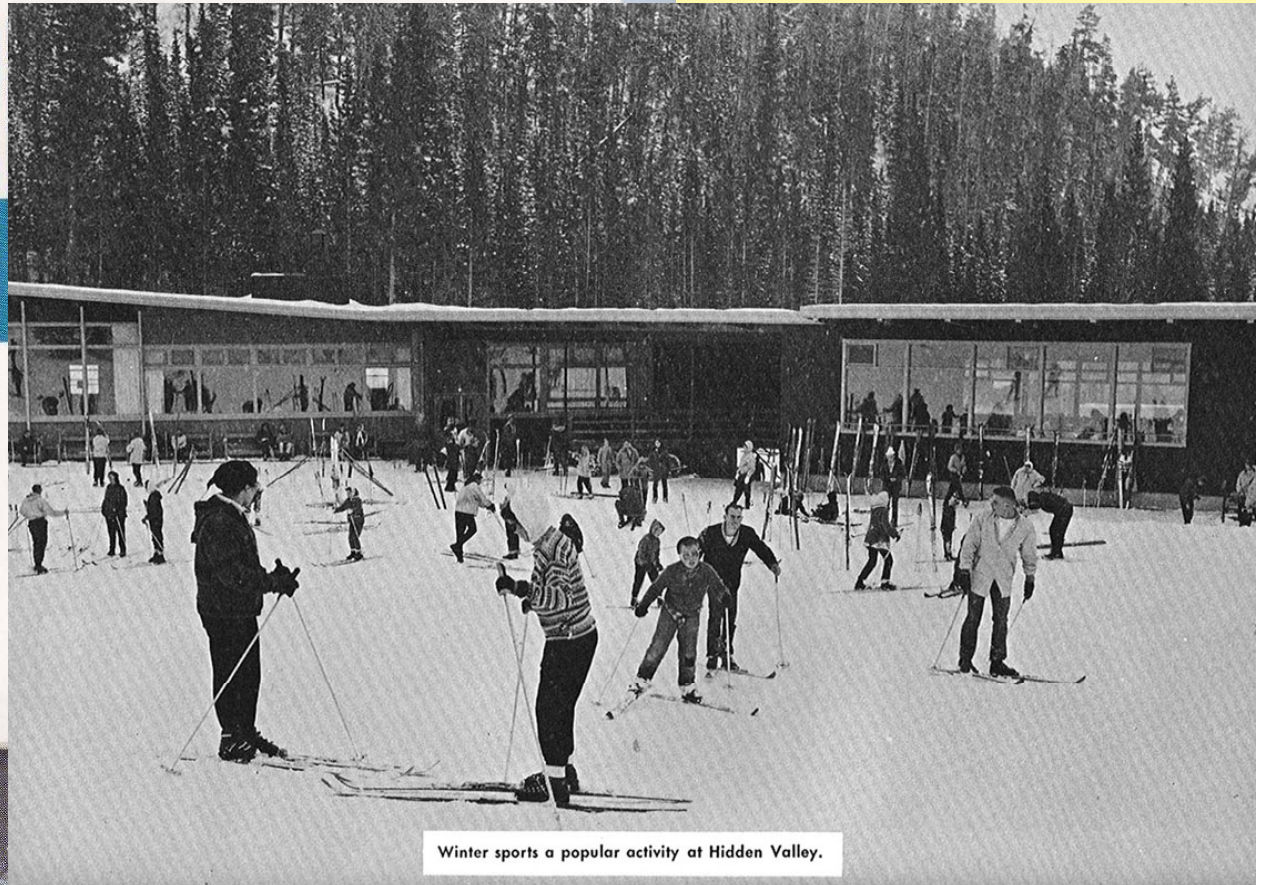
SKI BOBBING—the newest winter sport. Easy to learn, safe, and a great way to get Dad outdoors.

SPECTATOR LOUNGE

Warm comfortable area for non-skiers with picture window view of the action • Movie theater featuring ski and nature films • Picnic room for families.

SKATE SHELTER

Skates to rent and merchandise. Warming area.



Winter sports a popular activity at Hidden Valley.



HUNTING, CAMPING AND FISHING

IT IS impossible to devise a more satisfactory outing than a month or longer spent close to nature under the shadow of the great peaks of the Rockies in Colorado. These grand mountains seem made to order for nature lovers, for they are easily reached and have at their feet and in their lovely canons the most ideal camping places under the sun.

Colorado's chief attraction is, of course, her climate. But, in addition to this, the tourist will find, in that region along the foothills where are located the cities of Denver, Fort Collins, Boulder, Greeley, Long-

mont, Loveland, Colorado Springs and Pueblo, practically every ordinary advantage of the city or country life to which he is accustomed in the East or South. For instance, automobilizing along the base of the range is more and more popular with the passing of each year, and the roads are rapidly being perfected by joint action of the state and the several

counties. Also horseback riding is here found at its best and seems to partake of an exhilaration which does not characterize that pastime elsewhere.

Colorado is seen to best advantage, however, in her mountains, and not near them, as in the foothills cities. Every facility to penetrate their fastnesses is afforded the tourist ambitious to get into intimate touch with

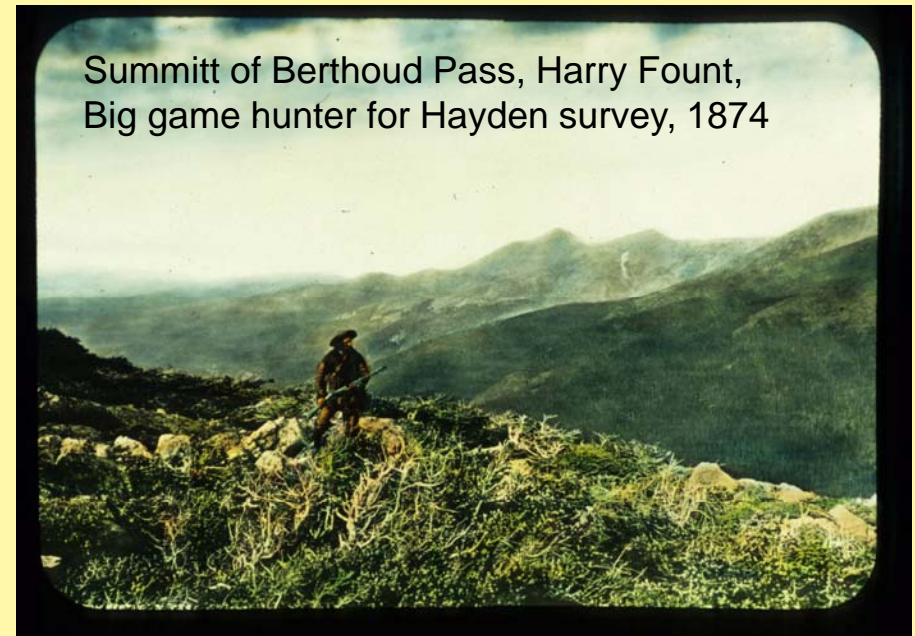


Page Thirty-one



Sprague family & Relatives 1889

- c. 1884 Off on a hunt to the hills A. E. Sprague
- c. 1889 Sprague family and relatives - antler seat



Summitt of Berthoud Pass, Harry Fount, Big game hunter for Hayden survey, 1874



15178 Feeding Trout, Hatcheries, Estes Park, Colo.



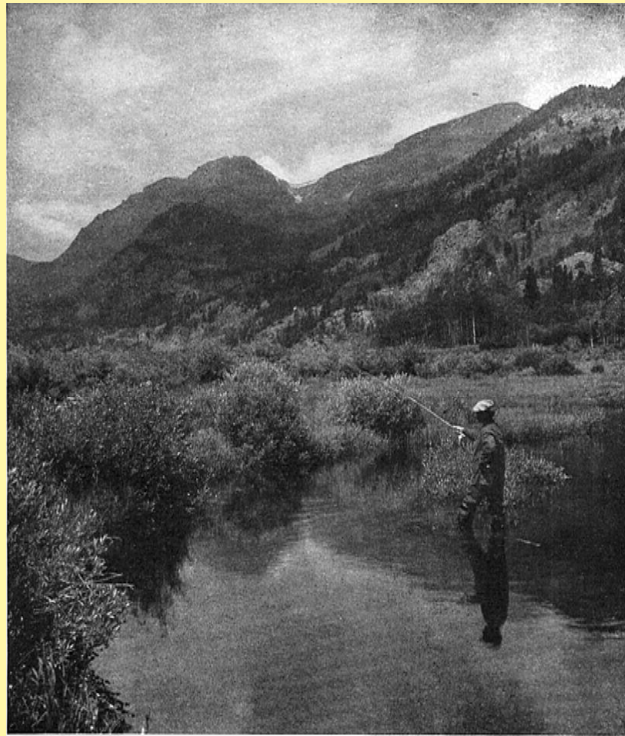
Built in 1907 by the Estes Park Improvement Society, "The Hatchery" raised fish for stocking the area's waters. Three kinds of trout were standard: Rainbow, Native of Black, and Eastern Brook. The enterprise became a celebrated tourist destination. One picture postcard dated from 1914 shows "Sunbeam" stating, "The pet fish of Estes Park Hatchery. From May 1st 1916 there were 13,575 visitors registered at the hatchery, representing 47 states and seven foreign countries."



The Hatchery: Boosting tourism, stocking sportfish

“Fishing in Park Best in Four Years” Estes Park Trail, Friday August 4, 1922

“The old time fishermen are this year reveling in pleasure, and all because fishing is the best it has been in four years. Some splendid catches are being made every day. ...The first of the week, Robt. Becker captured a 16 inch Rainbow in Glacier Creek and a good many others have captured large fish recently. The ... Estes Park Fish and Game Association ... have ... placed nearly a million trout in the streams of the Park and they plan to increase this to three million each year. Last week the fish association placed 50,000 Rainbow fry in the Ranch House nursing pond. These will be nursed to maturity and placed in the streams next year. Several members of the association have been assisting Supt. Thompson in placing the 400,000 native eggs on the hatching trays at the hatchery. This assistance is very much appreciated by the Superintendent.”



LATE AFTERNOON YIELDS GOOD CATCHES





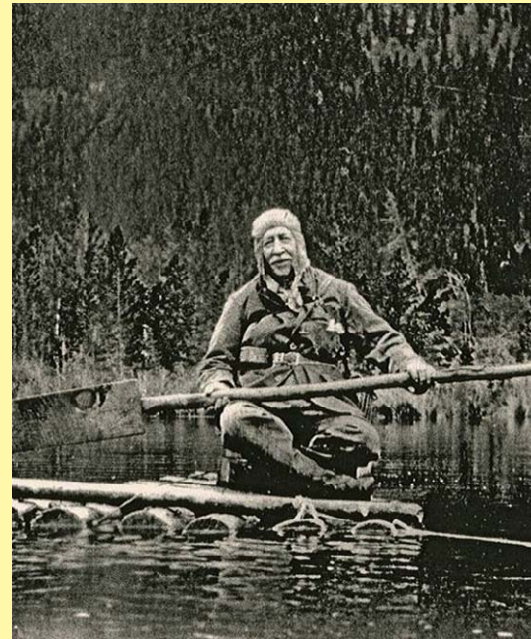
Aerial view of the annual Grand Lake Yacht Club Regatta. Photo circa late 1980s. (Courtesy James family, Grand Lake Lodge)



An E-scow screams across Grand Lake during the annual Regatta. 1989 photo. (Author photo)

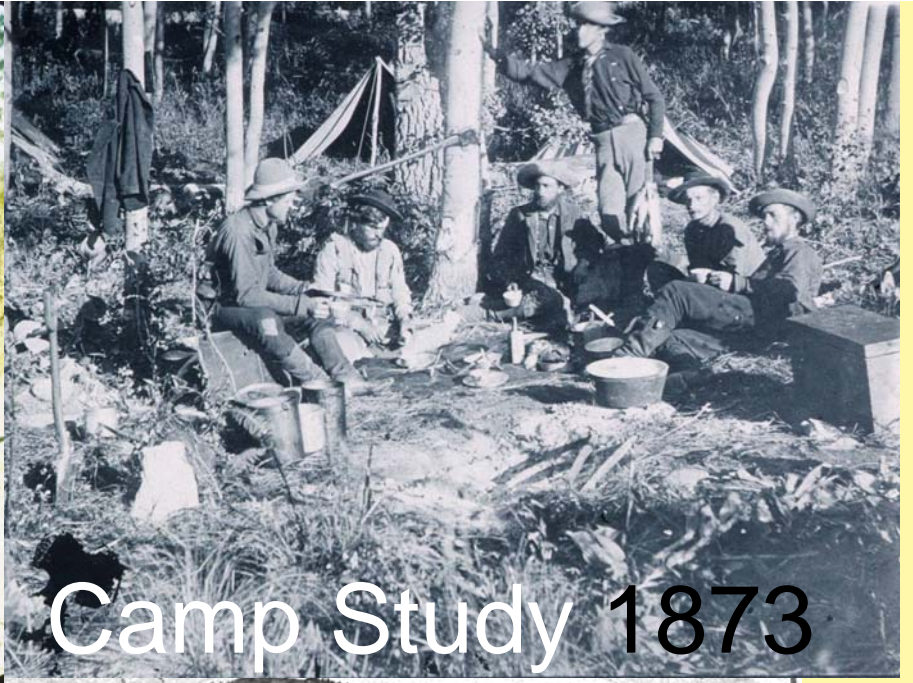
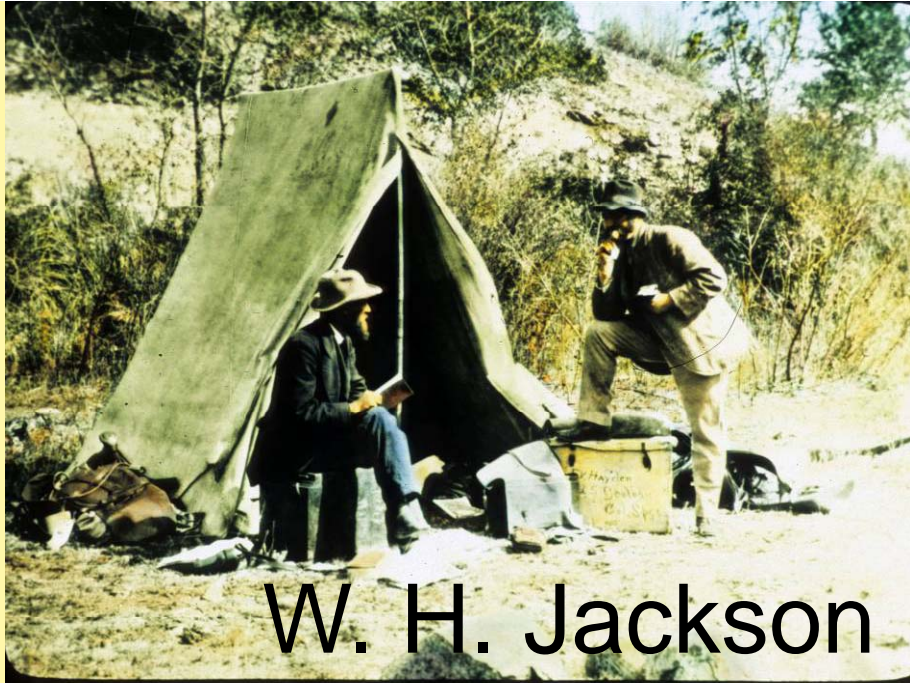


Yachting on Grand Lake, Rocky Mountain National Park



c. 1930 A. A. Hyde on raft, Hidden Valley

Boating on the lakes



W. H. Jackson

Camp Study 1873

Riddle's Series of Views
—OF—
ESTES PARK.

NO.	NO.
1 Entrance to Park.	27 Cascades of Horse Shoe Park.
2 Park from the East.	28 Cascades of Horse Shoe Park.
3 Mount Pigea.	30 McCreary's Cabin.
4 Mount Olympus.	31 McCreary's Spring.
5 Estes Park Hotel.	32 McCreary's Spring.
6 Estes Park Hotel across the Lake.	33 Rocks above McCreary's.
7 White's Cottage.	34 Camp at McCreary's.
8 From McGregor's Ranch North.	35 Campers below McCreary's.
9 From McGregor's Ranch up Black Cañon.	36 Park South from McCreary's.
10 Long's Peak from McGregor's.	37 Long's Peak from McCreary's.
11 Twin Peaks McGregor's.	38 Furgison House.
12 Balancing Rock, McGregor's.	39 Furgison Ranch, from South.
13 Elk Horn Lodge.	40 Furgison Ranch, from West.
14 James' Ranch, from the North.	41 Sprague's Ranch, from West.
15 James' Ranch, up Fall River Cañon.	42 Long's Peak, from Sprague's.
16 James' Ranch, Rustic Cottage.	43 Big Thompson Cañon, from Sprague's.
17 James' Ranch, Elk Horn Ornaments.	44 Rapids at Entrance of Willow Park.
18 James' Ranch, Elk Horn Ornaments.	45 Fishing for Trout at Willow Park.
19 Tenderfoot Fisherman.	46 The Gift of the Period.
20 Cascades of Horse Shoe Park.	47 Off for the Range.
21	48 Mulligan's Gulch.

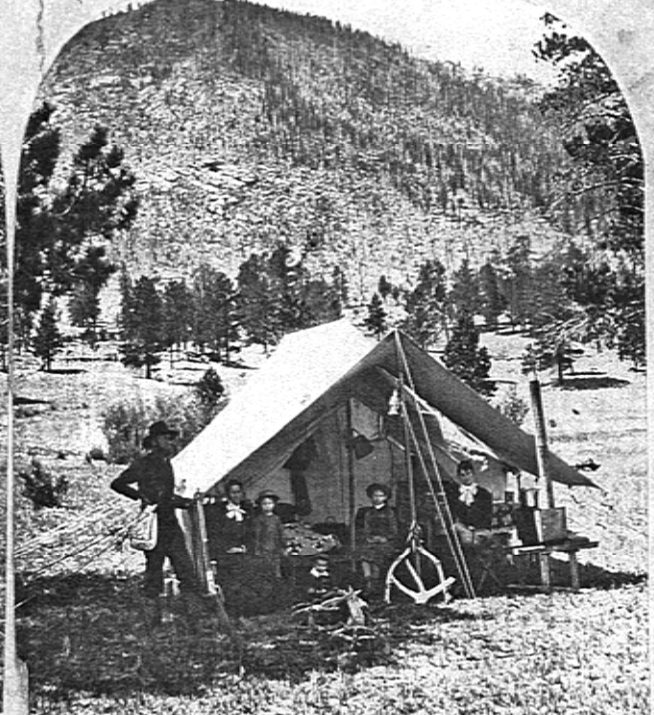
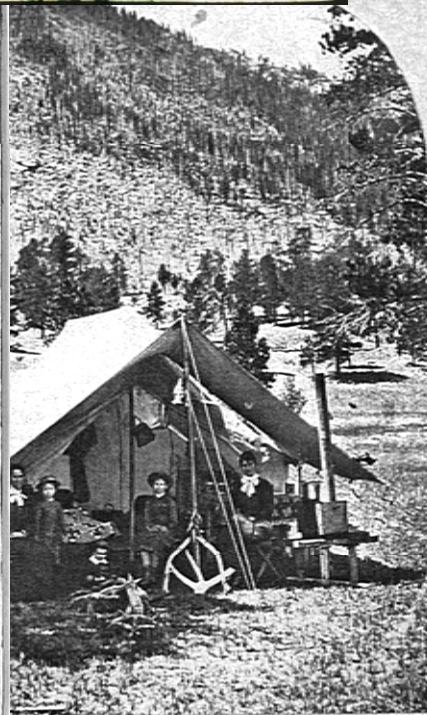
CABINETS, OR 8 X 10 PRINTS.

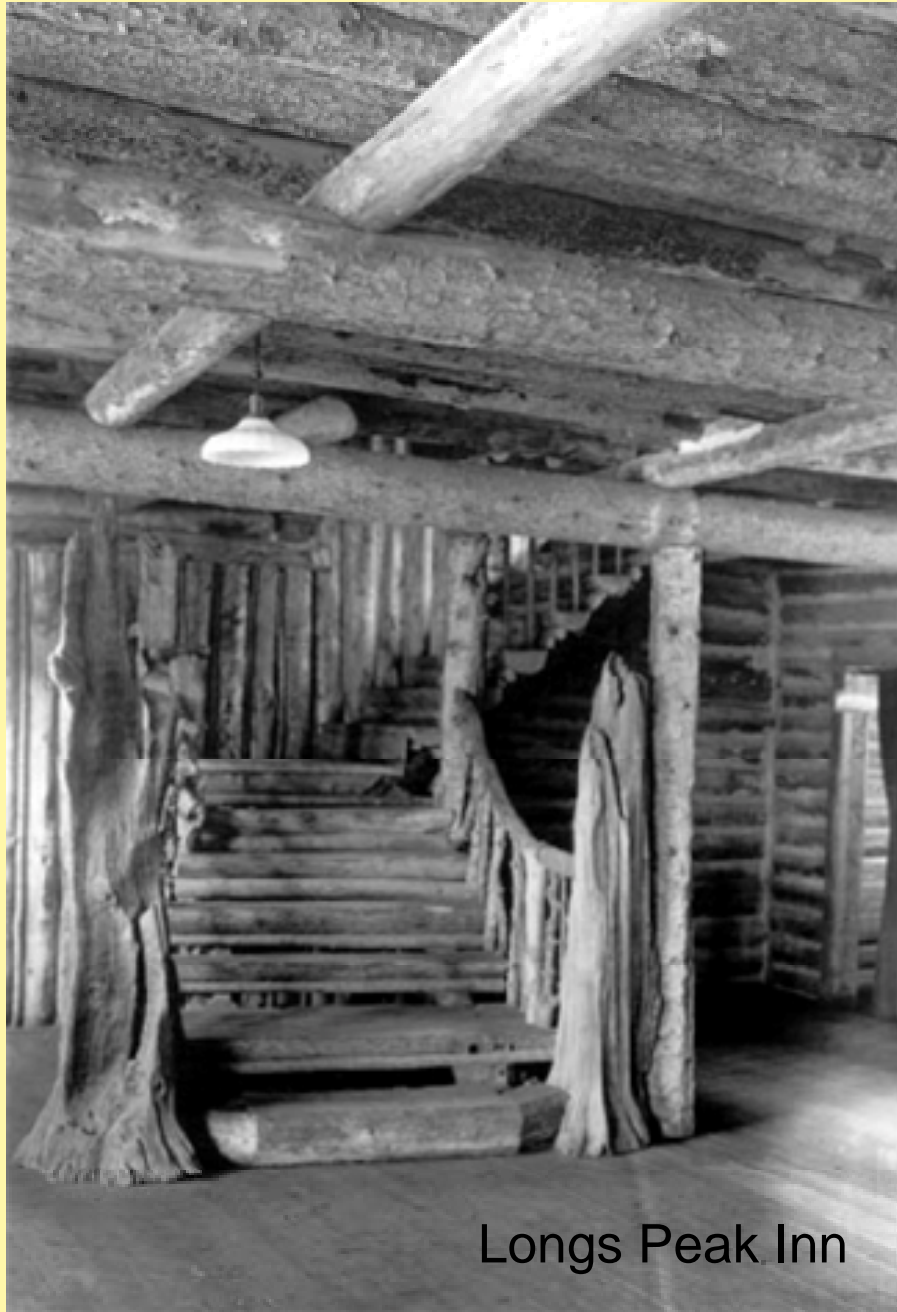
NO.	NO.
1 Elk Horn Lodge.	9 Hallett's Residence, Furgison's.
2 James' Ranch, from the North.	10 Engineer's Camp, No.
3 James' Ranch, from the East.	11 Engineer's Camp, No.
4 J. V. Whitehead's Residence.	12 Furgison's House.
5 Estes Park Hotel.	13 Furgison's Ranch, from the South.
6 Estes Park, across the Lake.	14 Furgison's Ranch, from the West.
7 White's Cottage.	15 W. D. Ewart's Rustic Cottage.
8 Long's Peak, from McCreary's.	16 E. B. Light's Rustic Cottage.

Name, *England's Hunt*

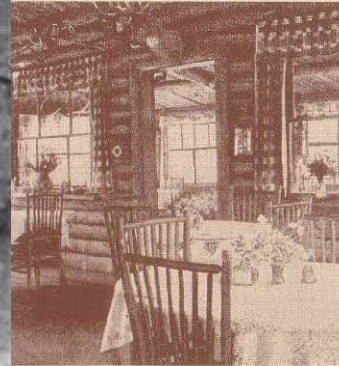
J. R. RIDDLE,
PHOTOGRAPHIC VIEW ARTIST,
287 Kansas Avenue,
TOPEKA, - KANSAS.

85.47.62
95.47.62



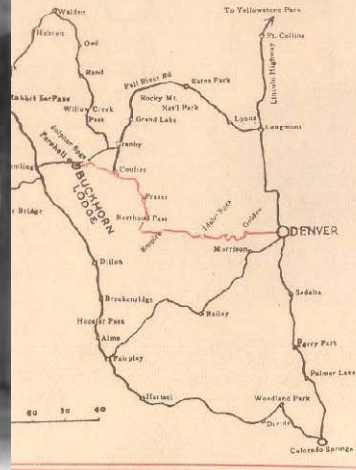


Longs Peak Inn



BUCKHORN LODGE

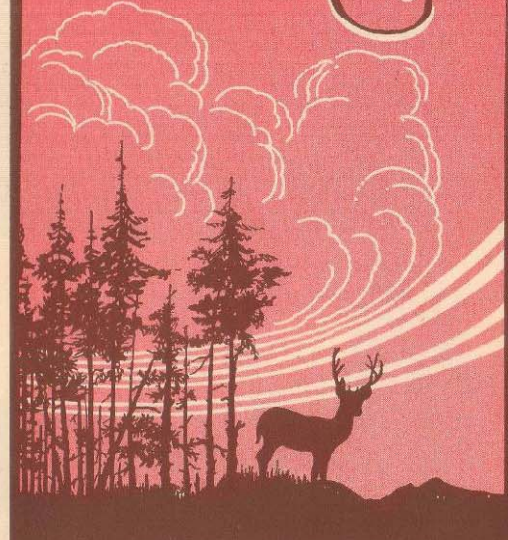
Reached by motor as well as by rail. The Victory Highway 16 miles West may be reached by the new road and Pass—or the Fall River road and Grand Lake.



1884

Buckhorn Lodge

AND CABINS



One hundred and fourteen miles from Denver on the scenic Denver and Salt Lake Railroad or one hundred miles via Victory Highway over Berthoud Pass—the Lodge is an ideal stopover for Motorists enroute to, or from, Glenwood Springs and Steamboat Springs.



Rustic interiors:

Authentic wilderness experience



Bear Lake Lodge, rustic interior




 CHA-NELO LODGE
 

CHA-NELO LODGE & CABINS

On Big Thompson River-Drake, Colo.

1/2 mile west on Hwy. U.S. 34

All modern units, accommodating 36 guests, with or without kitchens, nice patio, coffee for guests, fishing, riding or hiking.

Season—May 1st to October 1st Write for brochure

Mr. & Mrs. C. J. Zachman, Owners

Bob & Mary Hadley, Managers

Phone: Loveland Exch.—Normandy 7-3894

Yorkolor Process, 134 Spring St., N. Y. 12, N. Y.

PLACE
STAMP
HERE

Post Card

No 216

SUPPLIED FOR YOUR INFORMATION
 By MICHAEL MARDEN
 LASHLEY-PERSONS INVESTMENT CO.
 ONE PARK LANE P. O. BOX 1215
 ESTES PARK, COLORADO

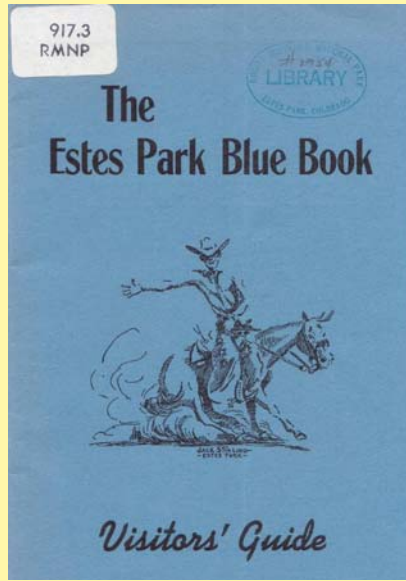
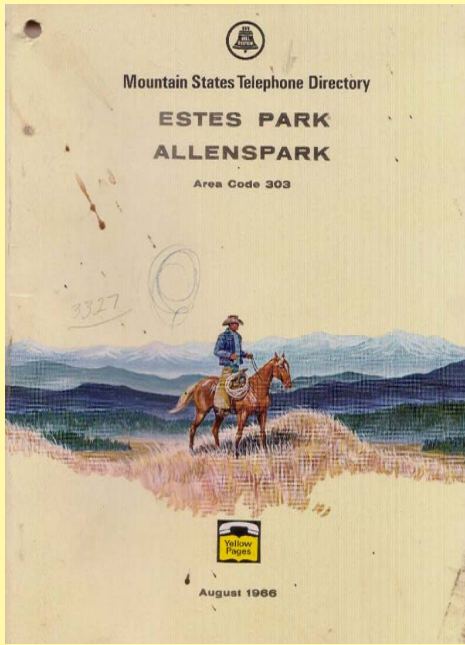
Mack Sorn
Feature

MICHAEL MARDEN, ESTES PARK, COLO.

YL 10230

84.22.15

Cowboys & Indians - The "Wild West"

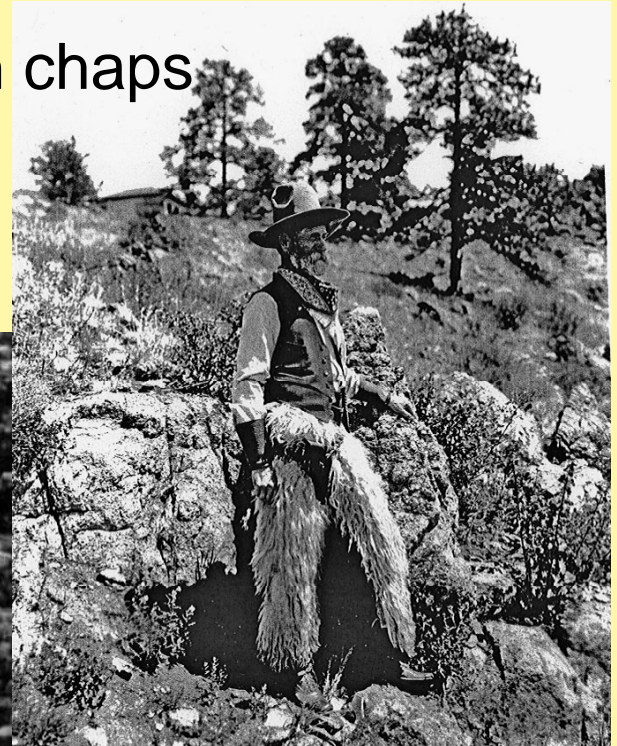


On One of the Trails in Wild Basin, Rocky Mountain National Park



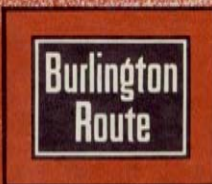
F. O. Stanley in chaps

Junior cowboys – right hats, no chaps



WESTERN
DUDE RANCHES
in

COLORADO • WYOMING • MONTANA



INVITE YOU TO -

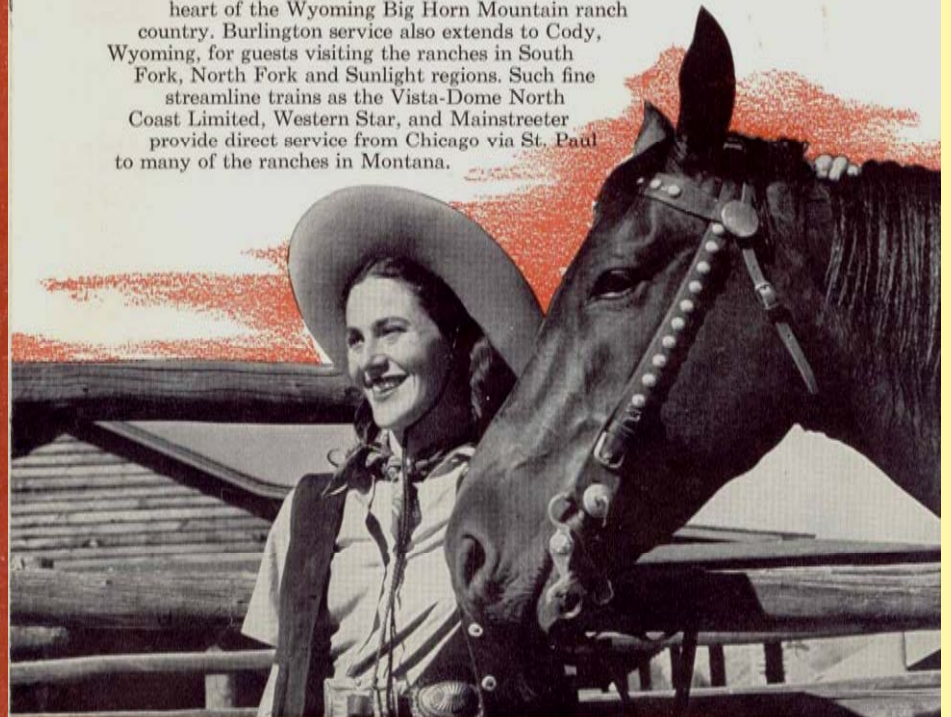


a Typically
**AMERICAN
VACATION**
in the Glorious West

OUT where the Western plateaus billow upward to meet the snow-crested ramparts of the Rockies is the Dude Ranch Country, as majestic, as rugged and almost as primitive as when white men first beheld it. Here is a different world, a world of horseflesh and leather, of boots and 10-gallon hats, of 50-mile vistas and two-mile-high mountains. Here is Nature unspoiled and unspoilable.

Burlington's Vista-Dome Denver Zephyr and Vista-Dome California Zephyr provide fast, overnight train service from Chicago to the Colorado Dude Ranch country.

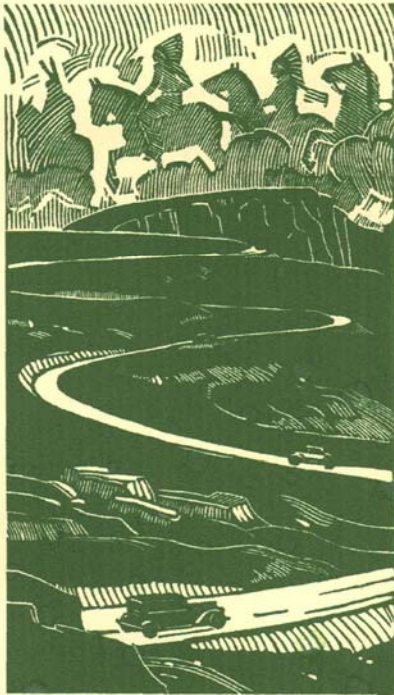
Through sleeping cars are operated daily during the summer to Sheridan - heart of the Wyoming Big Horn Mountain ranch country. Burlington service also extends to Cody, Wyoming, for guests visiting the ranches in South Fork, North Fork and Sunlight regions. Such fine streamline trains as the Vista-Dome North Coast Limited, Western Star, and Mainstreeter provide direct service from Chicago via St. Paul to many of the ranches in Montana.





Images construct and perpetuate reception

Rocky Mountain National Park



by Enos A. Mills

DEPARTMENT OF THE INTERIOR
RAY LYMAN WILBUR, Secretary
NATIONAL PARK SERVICE
HORACE M. ALBRIGHT, Director

ROCKY MOUNTAIN NATIONAL PARK YOUR PARK

Rocky Mountain National Park, like all the National Parks, is yours. It was established by Act of Congress in 1915, to be held forever for the benefit and enjoyment of the people of the United States. You, its owners, are free to see it and enjoy it in your own way. You may live in the hotels or lodges, or camp out with your own equipment and supplies. You are free to climb to its alpine meadows, ascend its mountains, explore its canyons and its countless lakes, study its wild life, and fish in its streams.

The park, which comprises a quarter of a million acres, straddling the Continental Divide, includes within its boundaries a splendidly representative area of the Front Range of the Rocky Mountains in Colorado. Its eastern slope drains into the Mississippi River and its western slope constitutes the headwaters of the Colorado River which flows through the Grand Canyon into the Gulf of California.

The Front Range is characterized by narrow gorges and broad open valleys ("parks") surrounded by high, rugged, snow-capped mountains which frequently rise abruptly a mile above the valley floors.

Visitors to the park who live at the base of its great mountains are more than a mile and a half above the sea level. Of the mountains, Longs Peak, the most majestic of them all, rises to an elevation of 14,303 feet. Many others exceed 12,000 feet, and several are nearly as high as Longs Peak.

The park-like valleys and glades that penetrate the range are clothed with a profusion of wild flowers and the mountain slopes with great forests. At an elevation of about 11,000 feet the conditions become so severe that the forest trees and many of the more delicate plants cannot exist and the flora changes to the hardy, highly specialized plants of the alpine meadows. The phenomena of timberline, the gauged, windswept, prostrate, vanguard of the forest, and the plants which have adjusted themselves to the existence of the extreme conditions of the high mountain are nowhere more easily seen or studied than in this park.

Another remarkable feature is the loggability of the record left by the glaciers during the ages when this country was in the making. Almost any view in the park is a study of glacial forms, U-shaped valleys, cirques, lakes, and moraines.

NATIONAL PARK SERVICE

The National Park Service is a Bureau of the Federal Government under the Department of the Interior. It administers the twenty-two national parks comprising a total of 19,501 square miles in the United States and its territories. The national parks belong to the people and the Park Service is here to serve them.

Its regulations are made to protect your property. You, as prudent owners, will of course help and will warn the careless and report those who mar the beauties of the park, for here as elsewhere there are always some thoughtless people.

20mo 2 1534

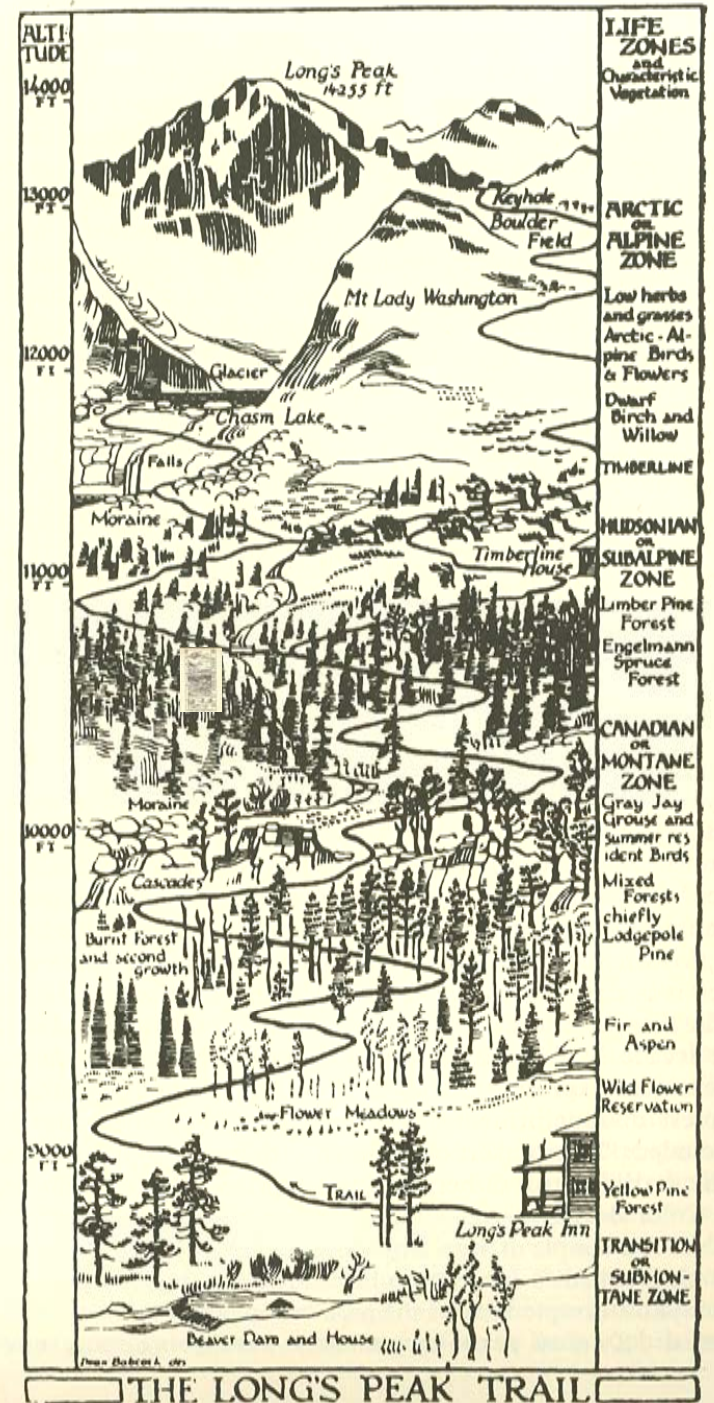
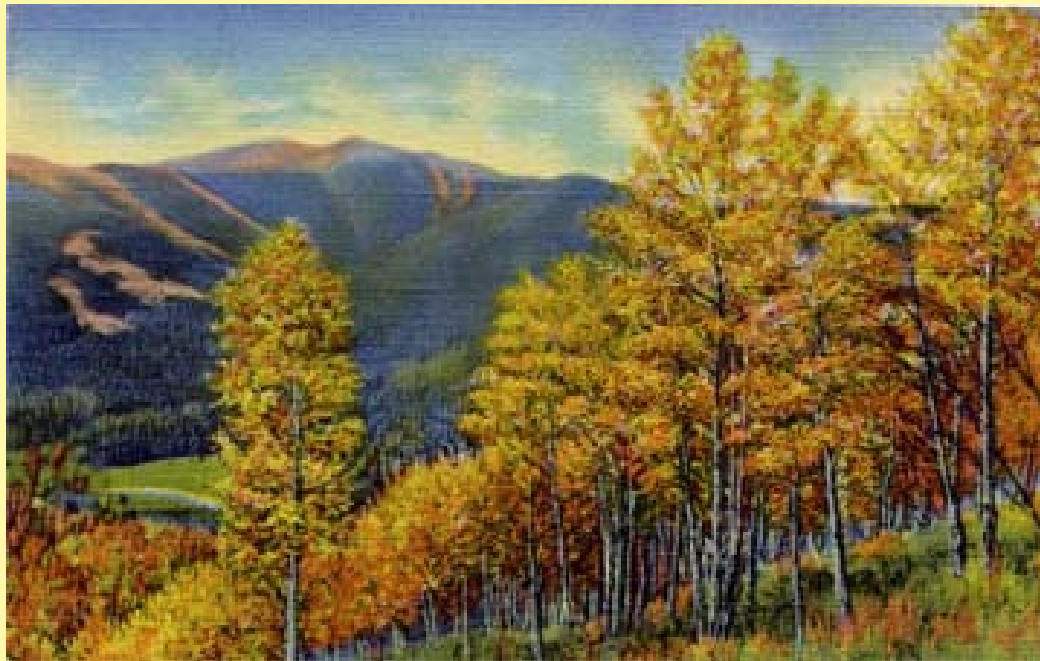


Environmental awareness

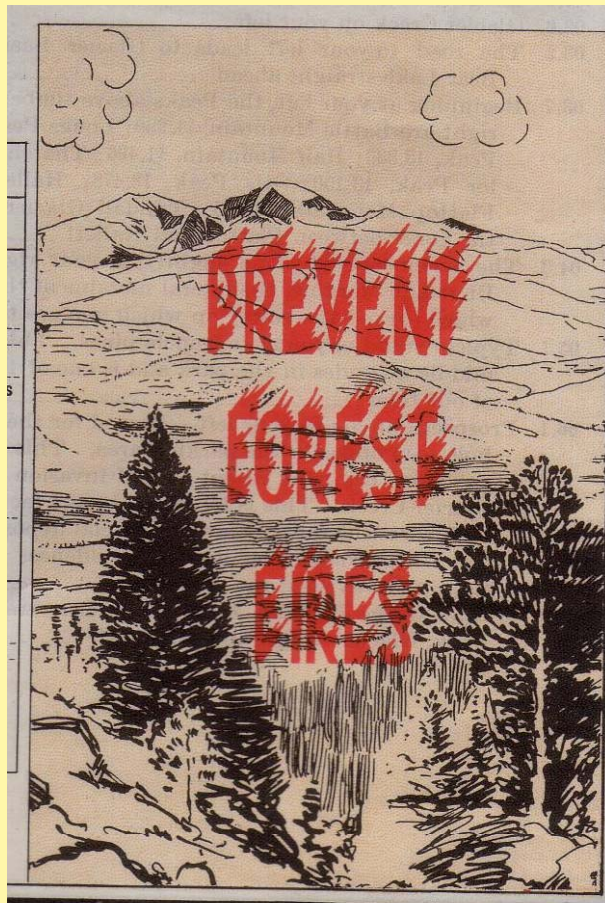
Rocky Mountain's 'Ecotomes' charted on Enos Mills' Long's Peak trail map at right.

"Everyone who goes into a national park wants information concerning the objects of interest. Facts about nature are more romantic than any of the fiction that may be faked concerning it."

Enos Mills, Rocky Mountain National Park, 93.



Early environmental ethics on a 1938 automobile touring map



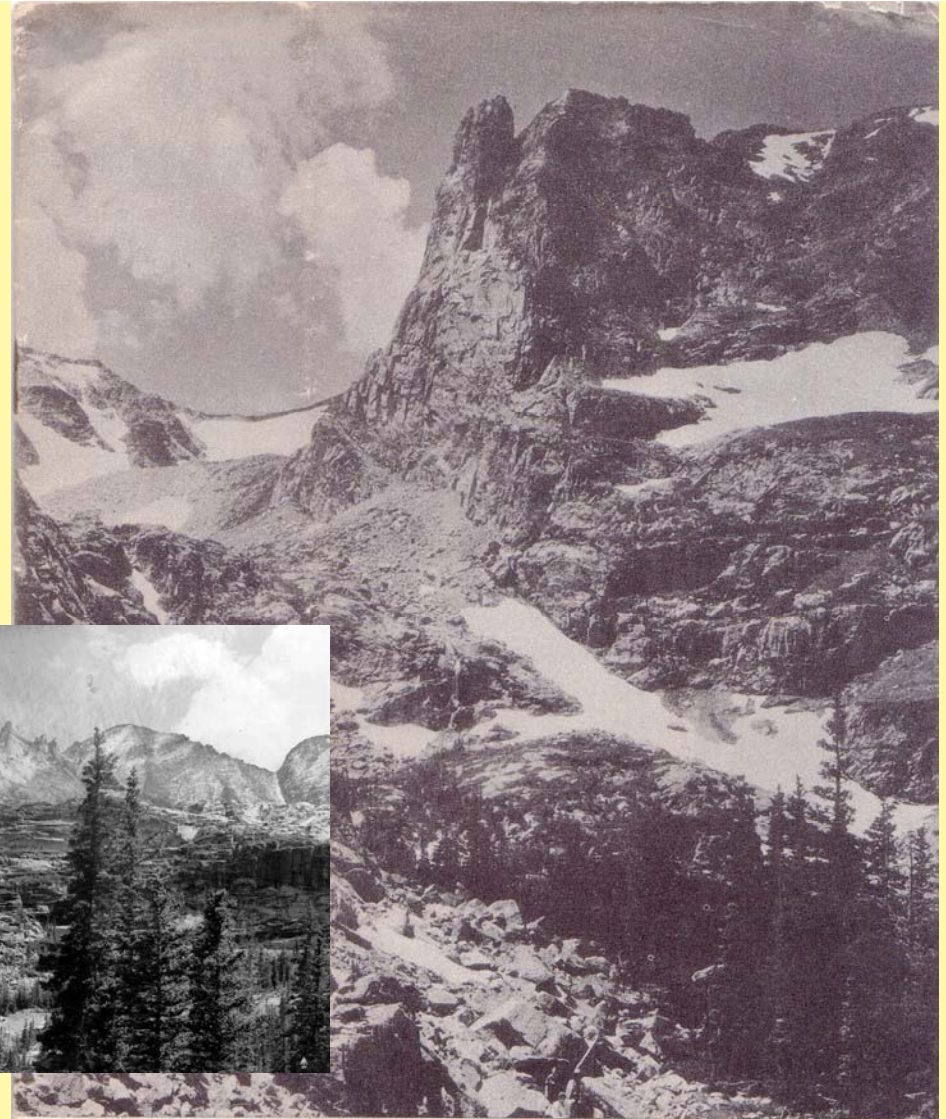
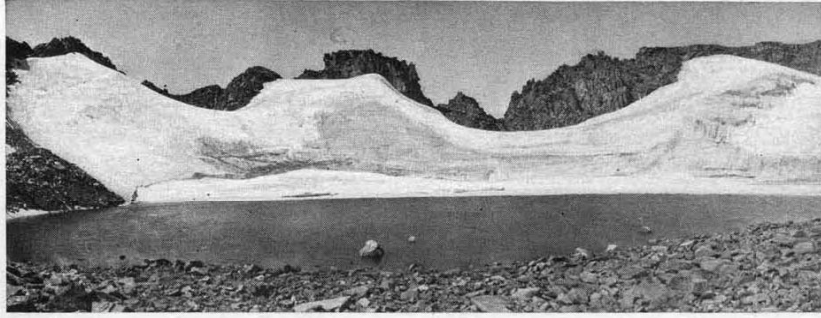
Camping is permitted throughout the park on specially designated camp sites

Location on Guide Map	
1	Stan
2	Lewi
3	Elkh
4	Crag
5	Casc
8	Estes
9	Bald
11	Fall I
14	Stea
15	Brim
16	Wind
16	Y. M.
17	Fore
18	Fern
19	Bear
20	Sprag
31	Rock
34	Deer
35	Chele
+	Hupp
+	Natio
+	Prosp
+	Shen
¶	Camp
13	Camp
21	Wind
¶	H Bar

LEAVE CLEAN GROUNDS FOR THE NEXT CAMPER

* Hotels or Service exerc the informati

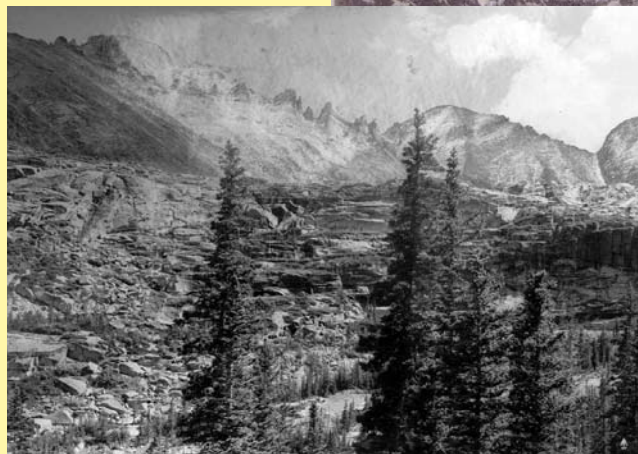
Long's Peak, in Estes Park, is 14,300 feet high, and is the mecca of climbing parties. It possesses a hanging chasm 2,800 feet sheer, said to be the highest known. Slow-moving glaciers and everlasting snow add to the beauties of this mountain. The upper picture shows Long's Peak from one of the splendid roads in the park and below is a glacier, easily accessible to mountaineering parties



EVIDENCE OF GLACIAL ACTION

One of the remarkable features of Rocky Mountain National Park is the legibility of the record left by the glaciers during the ages when America was in the making. The evidences of glacial action, in all their variety, make themselves apparent to even the most casual eye.

There are several remnants of these mighty ice masses which can be seen at the present time. Three of the largest ice fields, Andrews, Rowe, and Tyn-dall Glaciers, are visited by many people each year, while the smaller glaciers, such as Taylor and Spragues, are also interesting. One enormous moraine built up by an ancient glacier and rising with sloping sides nearly a thousand feet above the valley is so prominent that Moraine Park is named for it.



ROCKY MOUNTAIN

NATIONAL PARK

Colorado



15179. Beaver House and Dam, Estes Park, Colo.



“Yesterday, Mr. Hewes acted as guide and took the lot of us away over the hills to fish for trout and to see the beaver dams which have been formed by a colony settled there for 30 years. You would have seen us scrambling up a fallen tree over a rushing stream! Nobody thought to take a photo, but it would have been a treat! The dams are wonderful, a series of small lakes with houses built out in the middle, and canals down which they float the logs of aspen trees which they cut down with their teeth and pull along the ground to the water. They are 'some' civil engineers, you bet! We all enjoyed the 'hike', but were tired when we arrived home for dinner _ The distance was 4 or 5 miles, but over logs, and rocks and through underbrush _ We felt that we were in the primeval forest right enough!” *Mary Louise Link, letter to her sister, 1914*



Trude Lewis describes details of their hikes in a letter to her niece Jean, dated March 22, 1934. She writes, "... now and then a little chipmonk [sic] would travel along ahead of us and once we saw a mother ptarmigan with her family of 4 babies. Maybe you can find a picture of a ptarmigan in your dictionary. They are just the color of the rocks in the summer time and then when the snow is on the ground their plumage is white. If you look hard in the picture I believe you can see one."



Copyright by Winwall Brothers, Denver

AN ASPEN THICKET TRAIL IS A PATH OF DELIGHT

THE visitor will not forget the aspens in the Rocky Mountain National Park. Their white trunks and branches and their luxuriant bright green foliage are never out of sight. A trail through an aspen thicket is a path of delight.

Because of the unusual aspen growths, the region is the favored home of beavers, who make the tender bark their principal food. Beaver dams block countless streams and beaver houses emerge from the still ponds above. In some retired spots the engineering feats of generations of beaver families may be traced in all their considerable range.

Nowhere is the picturesqueness of timber-line more quickly and more easily seen. A horse after early breakfast, a steep mountain trail, an hour of unique enjoyment, and one may be back for late luncheon.

Eleven thousand feet up, the winter struggles between trees and icy gales are grotesquely exhibited.

The first sight of luxuriant Engelmann spruces creeping closely upon the ground instead of rising a hundred and fifty feet straight and true as masts is not soon forgotten. Many stems strong enough to partly defy the winters' gales grow bent in half circles. Others, starting straight in shelter of some large rock, bend at right angles where they emerge above it. Many succeed in lifting their trunks but not in growing branches except in their lee, thus suggesting great evergreen dust brushes.

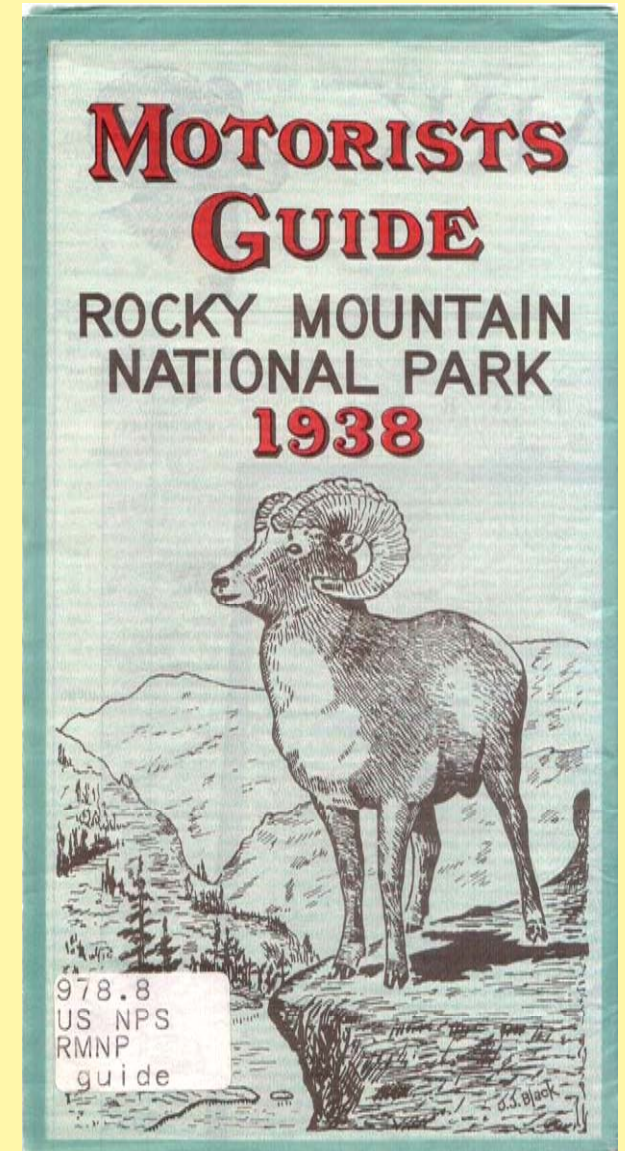
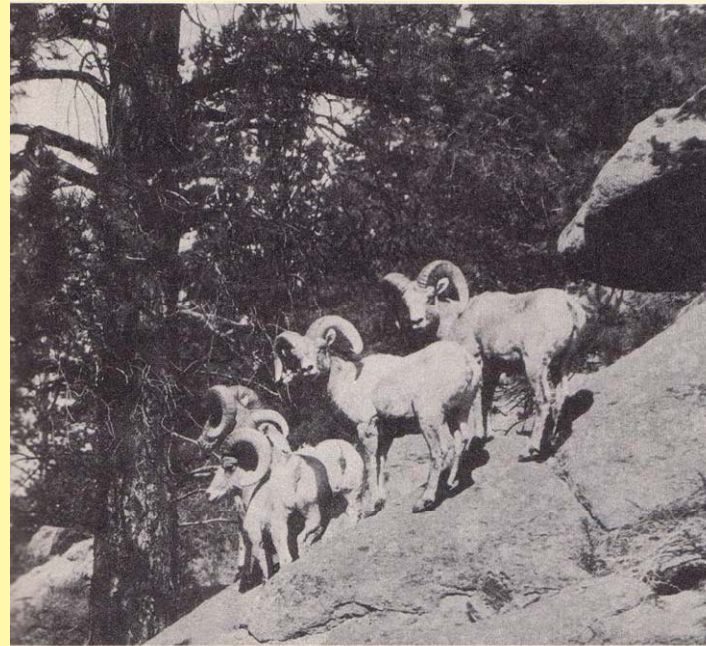
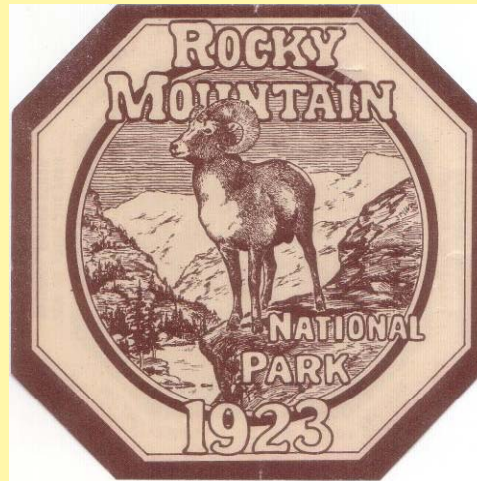


ROCKY MOUNTAIN NATIONAL PARK FAWN.



Photograph by Enos Mills

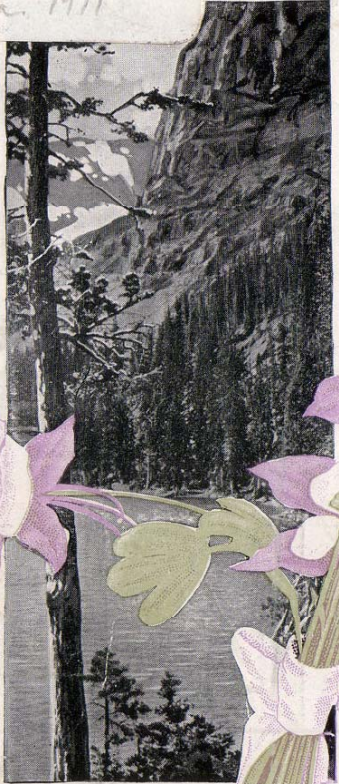
WIND-TWISTED TREES AT TIMBER-LINE



Big Horn Sheep are an iconic symbol of Rocky Mountain National Park, part of the visitor's "wilderness experience."



917.3
RMNP
ca. 1911



ROCKY MOUNTAIN NATIONAL PARK
LIBRARY
#6414
ESTES PARK, COLORADO

BEAUTIFUL
ESTES PARK
COLORADO



Romo 21675



Autumn arrives...



When the arctic gentian blooms.



The first snows of winter...



Are soon to follow.

Mammouth Subdistrict Librarian J. Good

Alpine wildflowers

of ROCKY MOUNTAIN NATIONAL PARK

Flowers that grow
in the land of
no trees...



WEST SIDE (GRAND LAKE SIDE)

EVENING PROGRAMS

Grand Lake Lodge — Illustrated talks by park ranger naturalists, 8:30 p.m., as follows:

Sun.	June 18	Rocky Mountain Trails
Tues.	20	Tundra Tapestry
Thurs.	22	Read the Trailside Book
Sun.	25	Highland Color
Tues.	27	Mountains and Glaciers
Thurs.	29	Wildlife World

Timber Creek Campfire—At Timber Creek Campground, 8:00 p.m. Talks by park ranger naturalists on subjects relating to the area. Nightly except Monday, beginning June 23.

Stillwater Campfire—At amphitheater in Stillwater Campground, 8:00 p.m. Talks and movies Fridays and Saturdays, beginning June 16.

GUIDED TRIPS

Nature Walks—Duration 1½-2 hours.

Sun.	June 11, 18	9:00 a.m. Along Lulu City Trail. Meet at Timber Creek Campground Fire Cir.
Sun.	18, 25	2:00 p.m. To Adams Falls. Meet at upper parking area at end of Adams Tunnel Road, east of Grand Lake.
Sun.	25	7:00 a.m. Bird Walk. Bring Binoculars. Meet Shadow Mountain NRA Hdrs.
Mon.	19, 25	9:00 a.m. To Adams Falls (as above)
Tues.	20, 27	9:00 a.m. Along Colorado River. Meet at Timber Creek Campground Fire Cir.
Wed.	14, 28	9:00 a.m. Along Lulu City Trail. (as above)
Thurs.	15, 29	9:00 a.m. To Adams Falls. (as above)
Thurs.	22, 29	2:00 p.m. Along Colorado River. (as above)
Fri.	16, 23	9:00 a.m. Along Colorado River. (as above)
Sat.	17, 24	9:00 a.m. To Adams Falls. (as above)
Sat.	24	1:00 p.m. Near Lake Irene. Meet at Milner Pass.

Half-Day Field Trips—Duration 3½ hours.

Fri.	June 16, 23	1:00 p.m. To Cascade Falls. Meet at Grand Lake Chamber of Commerce Information Station on U.S. 34.
	30	

Three-Quarter Day Field Trips—Duration 5-5½ hours.

Sun.	June 25	9:00 a.m. Up Specimen Mountain, an ancient volcano. May see bighorn sheep. Wear stout shoes, bring lunch and rainwear. Meet at Poudre Lake parking area.
Tues.	27	9:00 a.m. Geology trip to Specimen and Shipler Mountains. (be prepared and meet as above)
Thurs.	22, 29	9:00 a.m. Up Specimen Mountain. (as above)
Sat.	24	9:00 a.m. To Lulu City, a ghost mining camp. Bring lunch and rainwear. Meet at Timber Creek Campground Fire Cir.

PROGRAM OF ACTIVITIES

Rocky Mountain National Park

and

Shadow Mountain National Recreation Area



JUNE 1961



FREE SERVICES provided by the National Park Service

Rocky Mountain National Park
and Shadow Mountain National Recreation Area

Allyn Hanks, Superintendent

SPRING 1966
(Through July 2)
PROGRAM OF ACTIVITIES

Rocky Mountain National Park

Fred J. Novak, Superintendent



50th Anniversary Year
National Park Service

By the 1960s the park sponsored interpretive programs for visitors, many with strong environmental agendas.

Activity along Glacier Creek.

Meet 8:30 at Glacier Gorge Parking Area, return to Glacier Basin Campground.

- Objectives:
1. To study beaver habitats -- dam, lodge, etc.
 2. To understand how beaver influence other living things.
 3. To observe how beavers change the area where they live.



July 19 - August 16 (Thursdays)

Activity to be announced. Meet at Moraine Park Visitor Center, 8:30 A.M.

WHAT IS AVAILABLE?



Beginning June 19 - through August 30.

Every Tuesday and Thursday.

Half-day field study activities, 8:30 A.M. --returning 12:30 P.M.

Shoes suitable for hiking in rugged country are required

Activities may be cancelled if less than 5 children come to participate.

July 31 (Tues.) and August 30 (Thurs.)

To fire lookout station on Twin Sisters.

Meet 8:00 at, and return to, Twin Sisters Trail sign on Hwy. 7 (10 mi.) S. of Estes Park. This trip will return at 2:30 P.M. Bring your lunch.

- Objectives:
1. To study the problems of forest fire control.
 2. To visit a fire lookout and to examine the fire detection equipment.
 3. To study montane and subalpine wildflowers and trees.



Printed By Rocky Mtn. Nature Association

Discovering Nature

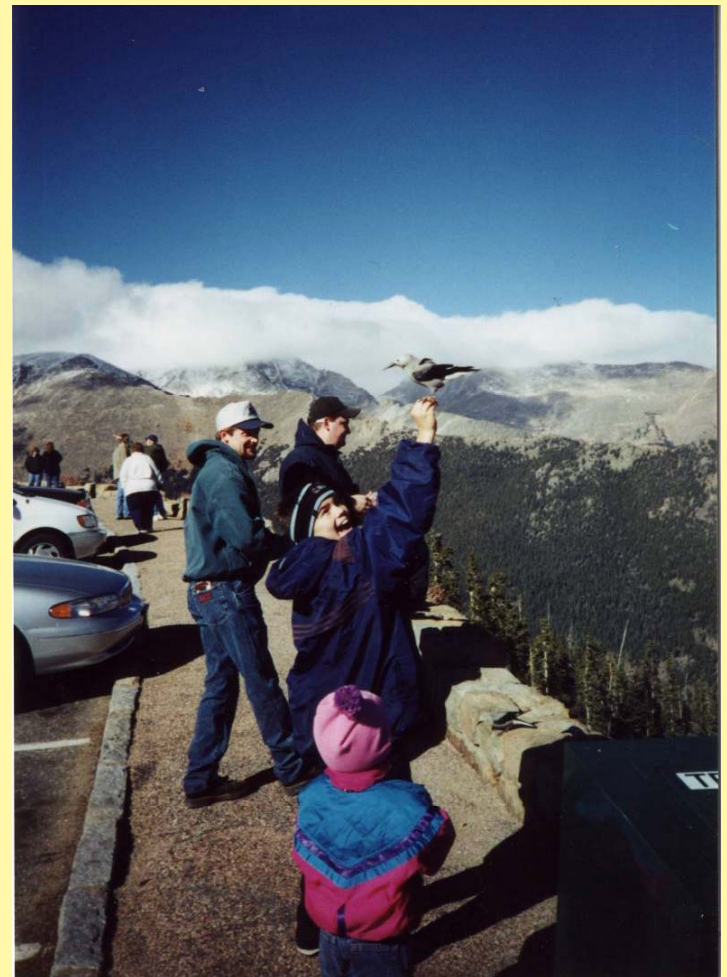


in

Rocky Mountain National Park

1962 YOUTH NATURE PROGRAM

"As a Junior Park Ranger, I promise to help protect Rocky Mountain National Park, my community, and the earth by being an active and responsible steward of the environment."



Rocky Mountain

Rocky Mountain National Park
Colorado

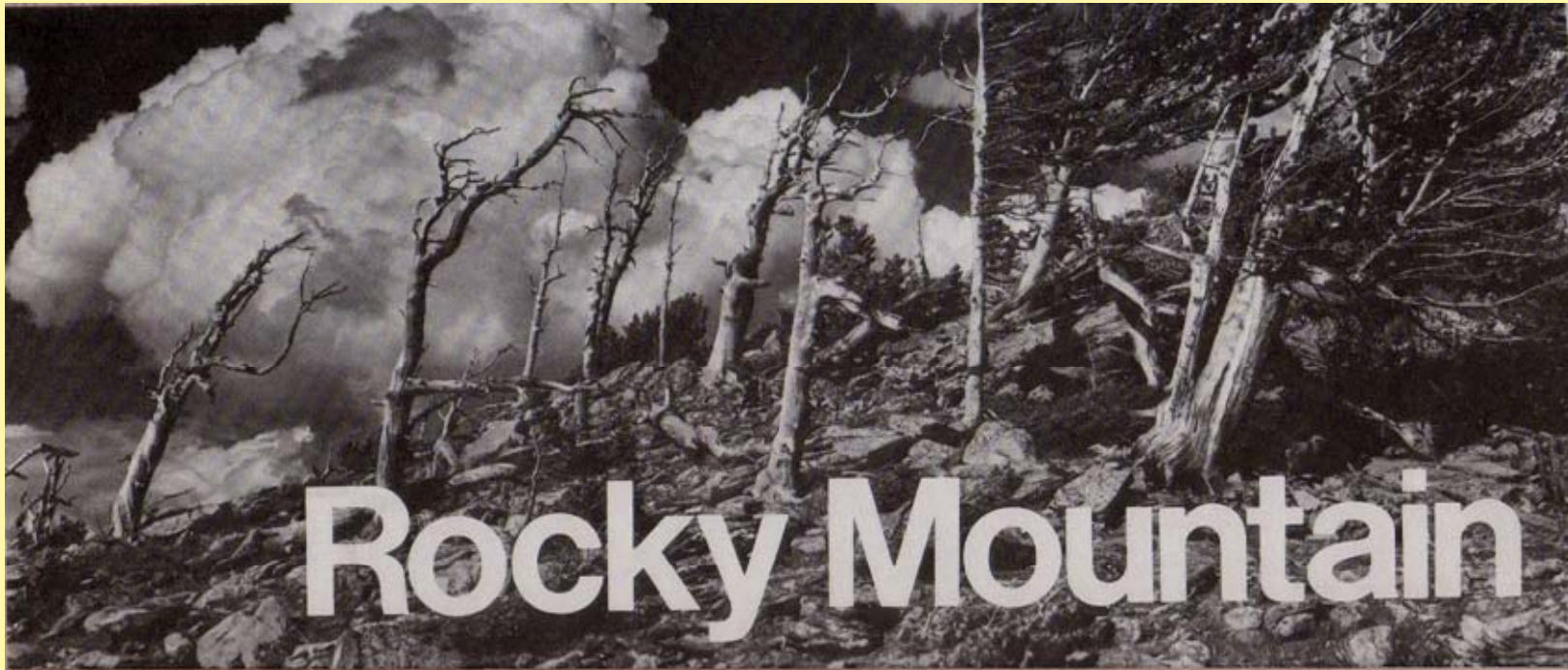
Official Map and Guide



The snow-mantled peaks of Rocky Mountain National Park rise above verdant subalpine valleys and glistening lakes. One-third of the park is above tree line, and here tundra predominates—a major reason why these peaks and valleys have been set aside as a national park. The first white men to see this area were French fur traders. In 1859 Joel Estes and his son, Milton, rode into the valley that bears their name. Few others settled in this rugged

country, and about 1909 Enos Mills, a naturalist, writer, and conservationist, began to campaign for preservation of this pristine area. Mills' campaign succeeded, and the area became Rocky Mountain National Park in 1915. A feature of the park is the marked differences found with the changing elevation. At lower levels in the foothills and mountain ecosystem, open stands of ponderosa pine and juniper grow on the slopes facing the sun; on cooler north

slopes are Douglas-fir. Gracing the streamsides are larches and spruces intermixed with dense stands of lodgepole pine. Here and there appear groves of aspen. Wildflower meadows and glades. Higher still forests of Engelmann spruce and subalpine fir take over in the subalpine ecosystem. Openings in these cool, dark forests produce wildflower gardens of rare beauty and luxuriance where the blue Colorado columbine reigns. At the upper ec



Rocky Mountain

Administration

Rocky Mountain National Park is administered by the National Park Service, U.S. Department of the Interior. The superintendent's address is Estes Park, CO 80517.

As the Nation's principal conservation agency, the Department of the Interior has responsibility for most of our nationally owned public land and natural resources. This includes fostering the wisest use of our land and water resources, protecting our fish and wildlife, preserving the environmental and cultural values of our national parks and historical places, and providing for the enjoyment of life through outdoor recreation. The Department assesses our energy and mineral resources and works to assure that their development is in the best interests of all our people. The Department also has a major responsibility for American Indian reservation communities and for people who live in Island Territories under U.S. administration.

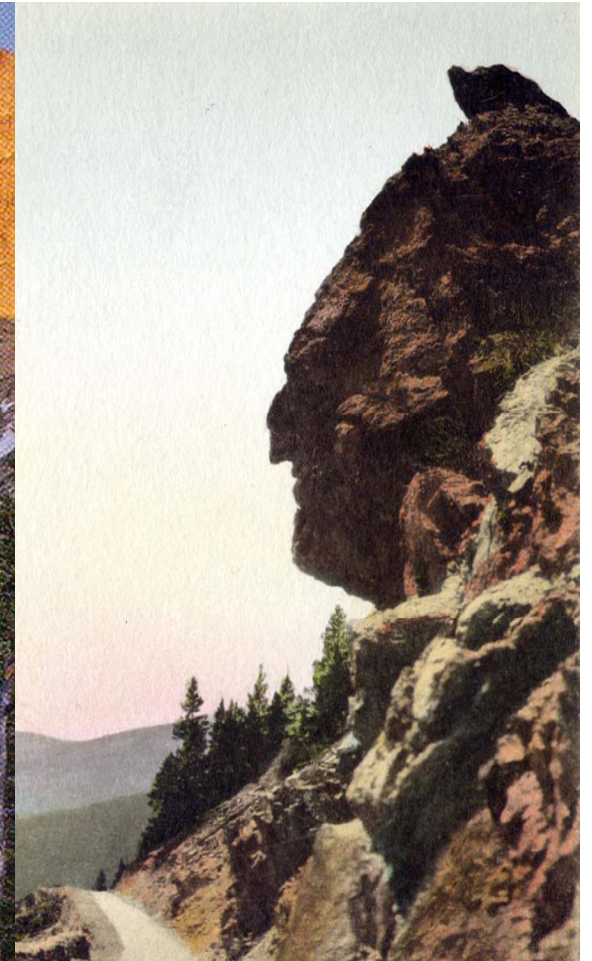
National Park Service
U.S. Department of the Interior

ROCKY MOUNTAIN
NATIONAL PARK

COLORADO
STATE QUARTER



A COMPLETE SET OF UNCIRCULATED
COLORADO
STATE QUARTERS FROM THE
DENVER AND PHILADELPHIA MINTS



**" Leave only footprints,
take only memories" – and
pictures!**

Thank you.

Ann Komara

Associate Professor of Landscape Architecture

University of Colorado - Denver

Extra stuff

EVIDENCE OF GLACIAL ACTION

One of the remarkable features of Rocky Mountain National Park is the legibility of the record left by the glaciers during the ages when America was in the making. The evidences of glacial action, in all their variety, make themselves apparent to even the most casual eye.

There are several remnants of these mighty ice masses which can be seen at the present time. Three of the largest ice fields, Andrews, Rowe, and Tyn-dall Glaciers, are visited by many people each year, while the smaller glaciers, such as Taylor and Spragues, are also interesting. One enormous moraine built up by an ancient glacier and rising with sloping sides nearly a thousand feet above the valley is so prominent that Moraine Park is named for it.

AUTOMOBILE TRIPS

The Trail Ridge Road, which crosses the Continental Divide in Rocky Mountain National Park, forms part of a

Rocky Mountain National Park ★

