

AMPHIBIANS

AMPHIBIA



FROGS (RANIDAE)

- C Northern leopard frog
(*Lithobates pipiens*)

TOADS (BUFONIDAE)

- C Rocky Mountain toad (*Anaxyrus woodhousii woodhousii*)
S Great Plains toad (*Anaxyrus cognatus*)

TREE FROGS (HYLIDAE)

- C Boreal chorus frog (*Pseudacris maculata*)

SPADEFoot TOADS (SCAPHIOPODIDAE)

- R Plains spadefoot (*Spea bombifrons*)

MOLE SALAMANDERS (AMBYSTOMATIDAE)

- U Barred tiger salamander (*Ambystoma mavortium*)

KEY

“C” Common: Species that occur in high abundance at DT. The more conspicuous of these are regularly seen by visitors.

“U” Uncommon: Species that occur in low abundance or have been occasionally documented at DT. These species are not often seen by visitors.

“R” Rare: Species that occur in very low abundance or have very few documented occurrences at DT. These species are very unlikely to be seen by visitors.

“S” Suspected: Species that are expected to occur at DT because there is suitable habitat and they have been documented nearby. However, there are currently no reported observations of these species in DT.

“P” Potential: Conspicuous species that likely do not occur in DT, but could occur there in the future because there is suitable habitat present. There are currently no reported observations of these species in DT.

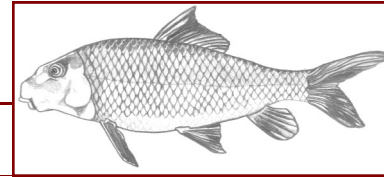
“*” Non-native species

(s) Only occur in DT during summer

(w) Primarily occur in DT during winter

FISH

OSTEICHTHYES



SUCKERS (CASTOMIDAE)

- C Shorthead redhorse (*Moxostoma macrolepidotum*)
C White sucker (*Catostomus commersonii*)
U River carpsucker (*Carpionodes carpio*)

MINNOWS (CYPRINIDAE)

- C Sand shiner (*Notropis stramineus*)
C* Red shiner (*Cyprinella lutrensis*)
U Creek chub (*Semotilus atromaculatus*)
U Longnose dace (*Rhinichthys cataractae*)
U Fathead minnow (*Pimephales promelas*)
U* Common carp (*Cyprinus carpio*)

CATFISH (ICTALURIDAE)

- C Channel catfish (*Ictalurus punctatus*)
U Stonecat (*Noturus flavus*)
S* Black bullhead (*Ameiurus melas*)

SUNFISH (CENTRARCHIDAE)

- C* Smallmouth bass (*Micropterus dolomieu*)
R* Green sunfish (*Lepomis cyanellus*)

Lists compiled by:
Leah Yandow, Doug Keinath, Wendy
Estes-Zumpf, & Bill Bradshaw

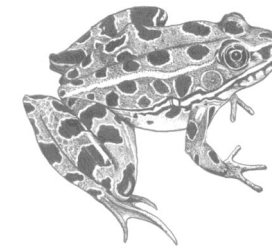
Artwork by:
Rebekah Smith & Summers Scholl

DEVILS TOWER NATIONAL MONUMENT

MAMMAL, REPTILE, AMPHIBIAN, & FISH CHECKLIST

List compiled January 2013
by Wyoming Natural Diversity Database
for Devils Tower National Monument

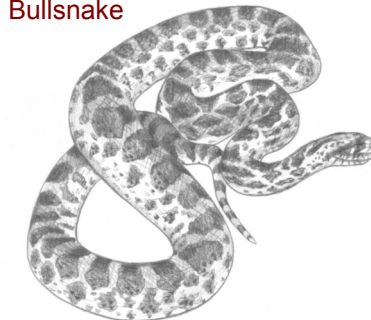
Northern leopard frog



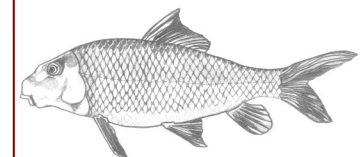
Black-tailed prairie dog



Bullsnake



Shorthead redhorse



MAMMALS

MAMMALIA



SHREWS (SORICIDAE)

- C Hayden's Shrew (*Sorex haydeni*)
- S Merriam's Shrew (*Sorex merriami*)

BATS (VESPERTILIONIDAE)

- C Little brown myotis (*Myotis lucifugus*)
- C Fringed myotis (*Myotis thysanodes*)
- C Big brown bat (*Eptesicus fuscus*)
- C(s) Hoary bat (*Lasiurus cinereus*)
- C Northern long-eared myotis (*Myotis septentrionalis*)
- C Western long-eared myotis (*Myotis evotis*)
- U(s) Eastern red bat (*Lasiurus borealis*)
- U Western small-footed myotis (*Myotis ciliolabrum*)
- U(s) Silver-haired bat (*Lasionycteris noctivagans*)
- U Long-legged myotis (*Myotis volans*)

HARES & RABBITS (LEPORIDAE)

- C Mountain cottontail (*Sylvilagus nuttallii*)
- S Desert cottontail (*Sylvilagus audubonii*)
- P White-tailed jackrabbit (*Lepus townsendii*)

SQUIRRELS (SCIURIDAE)

- C Least chipmunk (*Tamias minimus*)
- C Thirteen-lined ground squirrel (*S. tridecemlineatus*)
- C Red squirrel (*Tamiasciurus hudsonicus*)
- C Black-tailed prairie dog (*Cynomys ludovicianus*)
- U Northern flying squirrel (*Glaucomys sabrinus*)
- P Fox squirrel (*Sciurus niger*)

POCKET GOPHERS (GEOMYIDAE)

- U Northern pocket gopher (*Thomomys talpoides*)

POCKET MICE (HETEROMYIDAE)

- S Hispid pocket mouse (*Perognathus hispidus*)
- S Olive-backed pocket mouse (*Perognathus faciatus*)

MICE & WOODRATS (CRICETIDAE)

- C White-footed mouse (*Peromyscus leucopus*)
- C Deer mouse (*Peromyscus maniculatus*)
- C Prairie vole (*Microtus ochrogaster*)
- C Meadow vole (*Microtus pennsylvanicus*)
- C Bushy-tailed woodrat (*Neotoma cinerea*)
- U Muskrat (*Ondatra zibethicus*)
- U Western harvest mouse (*Reithrodontomys megalotis*)
- S Northern grasshopper mouse (*Onychomys leucogaster*)

JUMPING MICE (ZAPODIDAE)

- U Bear Lodge meadow jumping mouse (*Z. hudsonius campestris*)

PORCUPINES (ERETHIZONTIDAE)

- C Porcupine (*Erethizon dorsatum*)

DOGS & ALLIES (CANIDAE)

- C Coyote (*Canis latrans*)
- C Red fox (*Vulpes vulpes*)

RACCOONS (PROCYONIDAE)

- C Raccoon (*Procyon lotor*)

WEASELS & ALLIES (MUSTELIDAE)

- C Badger (*Taxidea taxus*)
- C Striped skunk (*Mephitis mephitis*)
- U Mink (*Mustela vison*)
- S Short-tailed weasel (*Mustela ermine*)
- S Long-tailed weasel (*Mustela frenata*)

DEER (CERVIDAE)

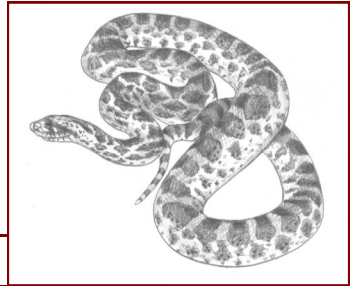
- C White-tailed deer (*Odocoileus virginianus*)
- C(w) Mule deer (*Odocoileus hemionus*)
- R Elk (*Cervus Canadensis*)

PRONGHORN (ANTILOCAPRIDAE)

- U Pronghorn antelope (*Antilocapra Americana*)

CATS (FELIDAE)

- U Mountain lion (*Puma concolor*)
- U Bobcat (*Lynx rufus*)
- U* Feral cat (*Felis familiaris*)



REPTILES

REPTILIA

MARSH TURTLES (EMYDIDAE)

- C Western painted turtle (*Chrysemys picta bellii*)

SOFTSHELL TURTLES (TRIONYCHIDAE)

- C Western spiny softshell turtle (*Apalone spinifera hartwegii*)

SNAPPING TURTLES (CHELYDRIDAE)

- U Eastern snapping turtle (*Chelydra serpentina serpentina*)

VIPERS (VIPERIDAE)

- C Prairie rattlesnake (*Crotalus viridis*)

COLUBRID SNAKES (COLUBRIDAE)

- C Bullsnake (*Pituophis catenifer sayi*)
- C Eastern yellow-bellied racer (*Coluber constrictor flaviventris*)
- C Red-sided gartersnake (*Thamnophis sirtalis parietalis*)
- R Pale milksnake (*Lampropeltis triangulum multistriata*)
- S Wandering gartersnake (*Thamnophis elegans vagrans*)
- S Black Hills red-bellied snake (*S. occipitamaculata pahsapae*)
- S Plains hog-nosed snake (*Heterodon nasicus*)
- S Plains gartersnake (*Thamnophis radix*)
- P Smooth greensnake (*Opheodrys vernalis*)

SPINY LIZARDS (PHRYNOSOMATIDAE)

- P Greater short-horned lizard (*Phrynosoma hernandesi*)
- P Northern sagebrush lizard (*S. graciosus graciosus*)