

2015

Archaeological Survey for the Snake Headwaters Project: 2013-2014 Survey and Evaluation Report

Justin M. Pfau
University of Montana

Follow this and additional works at: <http://scholarworks.umt.edu/etd>

 Part of the [Cultural History Commons](#), [Other History of Art, Architecture, and Archaeology Commons](#), [Other Languages, Societies, and Cultures Commons](#), and the [United States History Commons](#)

Recommended Citation

Pfau, Justin M., "Archaeological Survey for the Snake Headwaters Project: 2013-2014 Survey and Evaluation Report" (2015). *Theses, Dissertations, Professional Papers*. Paper 4553.

This Thesis is brought to you for free and open access by the Graduate School at ScholarWorks at University of Montana. It has been accepted for inclusion in Theses, Dissertations, Professional Papers by an authorized administrator of ScholarWorks at University of Montana. For more information, please contact scholarworks@mail.lib.umt.edu.

2013-2014 UNIVERSITY OF MONTANA SNAKE AND LEWIS RIVER SURVEY
AND THE SNAKE HEADWATERS PROJECT:
SURVEY AND EVALUATION OF ARCHAEOLOGICAL SITES IN SOUTHERN
YELLOWSTONE NATIONAL PARK

By

JUSTIN MCKENZIE PFAU

Bachelor of Arts in History, University of Montana, Missoula, Montana, 2010

Thesis

presented in partial fulfillment of the requirements
for the degree of

Master of Arts
In Anthropology

The University of Montana
Missoula, MT

Fall 2015

Approved by:

Sandy Ross, Dean of The Graduate School
Graduate School

Dr. Douglas MacDonald, Chair
Anthropology

Dr. Anna Prentiss
Anthropology

Dr. Steve Sherriff
Geology



Archaeological Survey for the Snake Headwaters Project 2013-2014 Survey and Evaluation Report

By: Justin M. Pfau and Douglas MacDonald, Ph.D., RPA



**Archaeological Survey for the Snake Headwaters Project
2013-2014 Survey and Evaluation Report**

DRAFT FINAL REPORT

Prepared for:
Yellowstone National Park

Submitted to
Staffan Peterson, Archaeologist, Branch of Cultural Resources
Tobin Roop, Chief, Branch of Cultural Resources
Yellowstone Center for Resources
PO Box 168
Yellowstone National Park, WY 82190

In Fulfillment of Work Conducted Under Cooperative Agreement between
the University of Montana, Yellowstone National Park, and the Rocky Mountains Cooperative
Ecosystem Study Unit
UM Grant 365774; Sponsor Reference Number P13AC00458

by
Justin N. Pfau

With contributions and editing by Douglas H. MacDonald, Ph.D., RPA
Department of Anthropology
The University of Montana
Missoula, Montana 59812
douglas.macdonald@mso.umt.edu

September 22, 2015

Abstract

This report presents the summary of work completed by the University of Montana in 2013 and 2014 along the Lewis and Snake Rivers of southern Yellowstone National Park. This project, known as the Snake and Lewis Survey (The Snake Headwaters Project) is ongoing and has been initiated as part of the Wild and Scenic Rivers designation. This designation would help preserve these rivers natural setting for future visitors. This project falls under the auspices of Section 110 of the NRHP, which allocates funding for federal agencies to conduct preemptive archaeological inventories. No current developments are planned in these river corridors, although ongoing road, trail and campsite maintenance occurs in the area and historic impacts on the landscape are evident. This report summarizes the methodology, survey results, and proposed interpretations and hypothesis associated with historic and prehistoric human use of the southernmost sections of the park.

The two seasons of survey covered more than 60km of river shoreline and canyon rim survey, with a survey corridor of ± 40 m wide. Some areas allowed for much larger or multiple transects, with the University of Montana surveying around 16 sq. km., or 3954 acres. Survey identified 54 (36 in 2013 and 18 in 2014) previously undocumented historic and prehistoric archaeological sites, along with 16 isolated finds. 48YE418 (SLS-42) was previously identified, but survey in 2014 dramatically expanded the site. The University of Montana identified four sites as eligible for NRHP listing, two of which were previously identified. Most sites were very small or sparse, lacked diagnostic artifacts, or require future investigation and subsurface testing. The crew also identified two low quality obsidian outcrops that are likely to have been utilized as quarries, as well as an orthoquartzite outcrop and isolated tested cobbles of both materials. One significant historic site was documented at a previously documented lithic scatter, 48YE1268, which also contains the remains of a historic cable car. Four historic gravel pits and several artifact scatters and hearths of unknown age were also identified. Shovel test pits were also conducted in areas of high potential and very low surface visibility, which occurred in four places along the Lewis River. None were conducted along the Snake River.

Six diagnostic prehistoric projectile points were identified and collected for analysis. They include two Paleoindian points, one Late Archaic point, and three Late Prehistoric arrow points. A number of other formal but not temporally diagnostic tools such as bifaces were identified as well. Total lithics were collected tallied 112 artifacts, consisting of diagnostic

artifacts and artifacts for EDXRF sourcing. In addition to artifacts for sourcing, 52 natural obsidian samples were taken from the quarries and isolated cobbles. Eighteen historic artifacts were collected for analysis as well, all of which came from 48YE1268. The vast majority of lithics identified throughout the survey are made from orthoquartzite and spherulitic obsidian, referred in this report as welded tuff obsidian, although it is referred to by many names in the literature.

Acknowledgements

Staffan Peterson, Archeologist with the Branch of Cultural Resources, is the project manager at Yellowstone National Park for the Snake and Lewis Survey, as well as the Snake Headwaters Project. Tobin Roop is Chief, Branch of Cultural Resources, and facilitated project management. During the 2013 and 2014 field season, Matthew Nelson was Field Director for the project, with University of Montana students, Justin Pfau, Michael Ciani, Stockton White, Ethan Ryan, Brandon Bachman, and Elizabeth Lynch, as field technicians. UM Department of Anthropology Professor Doug MacDonald is the project Principal Investigator, report editor, and lithic analyst. Justin Pfau wrote this report as his Thesis toward completion of his Masters of Arts degree in Anthropology from the University of Montana Department of Anthropology. With the exception of the lithic analysis and final editing, Justin wrote all of this report, including map, table, photograph, and figure preparation. Additional work was provided in the lab by University of Montana graduate students Matt Nelson (GIS mapping) and Brandon Bachman (digitization of field maps, condition assessment forms, data entry). Richard Hughes conducted EDXRF analysis of selected igneous materials from the project area.

Contents

Abstract.....	2
Acknowledgements.....	3
Contents.....	4
List of Maps.....	7
List of Figures	8
List of Tables.....	10
List of Photographs.....	12
Chapter 1. Project Description and Undertaking.....	20
Chapter 2. Environmental Setting	24
Geology	24
Physiography.....	26
Hydrology.....	26
Climate.....	27
Flora.....	28
Fauna.....	29
Prehistory.....	31
Paleoindian (12,000 to 8,000 years ago).....	32
Early Plains Archaic (8,000 to 5,000 years ago)	34
Middle Plains Archaic (5,000 to 3,000 years ago).....	36
Late Plains Archaic (3000 to 1500 years ago).....	38
Late Prehistoric (1500 to 300 years ago)	40
Contact and Protohistoric (300 to 150 years ago).....	42
Chapter 3. Background Research.....	44
Chapter 4. Survey Methodology	50
Archaeological Survey Methods	50
Artifact Analysis Methods	51
Chapter 5. 2013-2014 Inventory Results	53
Snake and Lewis River Confluence Sites.....	54

48YE1268/TE1568	56
SLS-1 (48YE2204).....	63
SLS-2 (48YE2205).....	66
SLS-3 (48YE2206).....	69
SLS-4 (48YE2207).....	72
SLS-5 (48YE2208).....	76
SLS-6 (48YE2209).....	81
SLS-29 (48YE2231).....	84
SLS-30 (48YE2232).....	88
SLS-45 (48YE2251).....	91
SLS-42 (48YE418).....	95
SLS-43 (48YE2249).....	102
SLS-44 (48YE2250).....	106
SLS-46 (48YE2252).....	109
Lewis River, Crawfish Creek, and Lewis River Channel Sites.....	113
SLS-7 (48YE2210).....	115
Lewis River IF-3 & IF-4	118
SLS-8 (48YE2211).....	119
Lewis River IF-1 & IF-2	122
SLS-9 (48YE2212).....	123
SLS-10 (48YE2213).....	127
SLS-12 (48YE2215).....	132
IF-5	135
SLS-31 (48YE2233).....	136
South Lewis Canyon STP's	139
SLS-11 (48YE2214).....	141
Lewis Canyon	144
SLS-22 (48YE2225).....	147
SLS-23 (48YE2226).....	150
SLS-24 (48YE2227).....	153
IF-7	156
IF-11	157
IF-8	158
SLS-26 (48YE2229).....	159

SLS-27 (48YE2230).....	162
SLS-25 (48YE2228).....	165
SLS-35 (48YE2238).....	168
SLS-15 (48YE2218).....	171
IF-10	173
SLS-34 (48YE2237).....	174
SLS-33 (48YE2236).....	178
IF-9	181
SLS-32 (48YE2234).....	182
Lewis Falls Sites	185
SLS-16 (48YE2219).....	187
Lewis River Bend STP's	192
SLS-17 (48YE2220).....	194
SLS-19 (48YE2222).....	197
SLS-18 (48YE2221).....	200
SLS-20 (48YE2223).....	204
IF-6	207
SLS-13 (48YE2216).....	208
SLS-21 (48YE2224).....	212
SLS-14 (48YE2217).....	216
SLS-28 (48YE2244).....	219
Lewis Channel IF-1	223
Snake River Sites	225
SLS-47 (48YE2253).....	227
SLS-49 (48YE2255).....	229
SLS-36 (48YE2238).....	231
SLS-37 (48YE2239).....	233
SLS-38 (48YE2245).....	236
SLS-39 (48YE2246).....	239
SLS-40 (48YE2247).....	242
SLS-41 (48YE2248).....	245
Snake Hot Springs.....	249
SLS-48 (48YE2254).....	251
IF-2	254

IF-3	255
Red Obsidian Samples on the Snake River	256
SLS-50 (48YE2256).....	259
IF-1	262
SLS-52 (48YE2258).....	263
SLS-51 (48YE2257).....	266
IF-5	271
Bones.....	272
SLS-53 (48YE2259).....	273
IF-4	279
SLS-54 (48YE2260).....	280
Chapter 6. Conclusions and Summary	286
Summary of Findings and Recommendations.....	286
Conclusion.....	294
References Cited	295

List of Maps

Map 1. Project Area Overview in Yellowstone National Park	22
Map 2. Snake and Lewis Survey Overview	23
Map 3. Confluence Sites Imagery Overview.....	55
Map 4. Overview of southern Lewis River Sites	114
Map 5. Lewis Canyon Overview Map	144
Map 6. North Lewis Canyon Sites.....	146
Map 7. Lewis Falls Sites Overview.	186
Map 8. Lewis River Channel Overview.	224
Map 9. Western Snake River Sites, Shown in Blue.....	226
Map 10. Snake Hot Springs Sites.	250
Map 11. East of Snake Hot Springs with IF-4 and SLS-54.....	278

List of Figures

Figure 1. 48YE1268 Site Planview map	62
Figure 2. SLS-1 (48YE2205) Site Planview Map	65
Figure 3. SLS-2 (48YE2205) Site Planview Map	68
Figure 4. SLS-3(48YE2206) Planview Map	71
Figure 5. SLS-4 (48YE2207) Site Planview Map	75
Figure 6. SLS-5 (48YE2208) Site Planview Map	80
Figure 7. SLS-6 (48YE2209) Site Planview Map	83
Figure 8. SLS-29 (48YE2231) Site Planview Map	87
Figure 9. SLS-30 (48YE2232) Site Planview Map	90
Figure 10. SLS-45 (48YE2251) Site Planview Map	94
Figure 11. SLS-42 (48YE418) Site Planview Map	101
Figure 12. SLS-43 (48YE2249) Site Planview Map	105
Figure 13. SLS-44 (48YE2250) Site Planview Map	108
Figure 14. SLS-46 Site Planview Map	112
Figure 15. SLS-7 (48YE2210) Site Planview Map	117
Figure 16. SLS-8 (48YE2211) Site Planview Map	121
Figure 17. SLS-9 (48YE2212) Site Planview Map	126
Figure 18. SLS-10 (48YE2213) Site Planview Map	131
Figure 19. SLS-12 (48YE2215), STP Profile	133
Figure 20. SLS-12 (48YE2215), Site Planview Map	134
Figure 21. SLS-31 (48YE2233) Site Planview Map	138
Figure 22. South Lewis Canyon STP Profile Examples	139
Figure 23. South Lewis Canyon STP Planview Map	140
Figure 24. SLS-11 Site Planview	143
Figure 25. SLS-22 (48YE2225) Site Planview Map	149
Figure 26. SLS-23 (48YE2226) Site Planview Map	152
Figure 27. SLS-24 (48YE2227) Site Planview Map	155
Figure 28. SLS-26 (48YE2229) Site Planview Map	161
Figure 29. SLS-27(48YE2230) Site Planview Map	164
Figure 30. SLS-25 (48YE2228) Site Planview Map	167
Figure 31. SLS-35 (48YE2238) Site Planview Map	170
Figure 32. SLS-15 (48YE2218) Site Planview Map	172
Figure 33. SLS-34 Site Map.....	177

Figure 34. SLS-33 (48YE2236) Site Planview Map	180
Figure 35. SLS-32 (48YE2234) Site Planview Map	184
Figure 36. SLS-16 (48YE2219) Site Planview Map	191
Figure 37. Lewis River Bend STP Profiles	192
Figure 38. Lewis River Bend STP Planview Map	193
Figure 39. SLS-17 (48YE2220) Site Planview Map	196
Figure 40. SLS-19 (48YE2222) Site Planview Map	199
Figure 41. SLS-18 (48YE2221) Site Planview Map	203
Figure 42. SLS-20 (48YE2223) Site Planview Map	206
Figure 43. SLS-13 (48YE2216) Site Planview Map	211
Figure 44. SLS-21 (48YE2224) Site Planview Map	215
Figure 45. SLS-14 (48YE2217) Site Planview Map	218
Figure 46. SLS-28 (48YE2244) STP Profiles.....	220
Figure 47. SLS-28 (48YE2244) Site Planview Map	222
Figure 48. SLS-47 (48YE2253) Site Planview Map	228
Figure 49. SLS-49 (48YE2255) Site Planview Map	230
Figure 50. SLS-36 (48YE2238) Site Planview Map	232
Figure 51. SLS-37 (48YE2239) Site Planview Map	235
Figure 52. SLS-38 (48YE2245) Site Planview Map	238
Figure 53. SLS-39 Site Planview Map	241
Figure 54. SLS-40 (48YE2247) Site Planview Map	244
Figure 55. SLS-41 (48YE2248) Site Planview Map	248
Figure 56. SLS-48 (48YE2254) Site Planview Map	253
Figure 57. SLS-50 (48YE2256) Site Planview Map	261
Figure 58. SLS-52 (48YE2258) Site Planview Map	265
Figure 59. SLS-51 (48YE2257) Site Planview Map	270
Figure 60. SLS-53 (48YE2259) Site Planview Map	276
Figure 61. SLS-54 (48YE2260) Site Planview Map	285
Figure 62. Summary of EDXRF Results for the Snake and Lewis Rivers	291
Figure 63. Summary of Material Types for all Lithic Artifacts (including past research)	292
Figure 64. Past survey lithic material types	293
Figure 65. 2013 survey lithic material types.....	293
Figure 66. 2014 survey lithic material types.....	293

List of Tables

Table 1. Summary of artifact types from past research	49
Table 2. Summary of Previously Recorded Archaeological Sites	49
Table 3. 48YE1268 summary of GPS Data for Artifacts and Landmarks.	59
Table 4. 48YE1268 Historic Artifacts Analysis Results	61
Table 5. SLS-1 (48YE2204) Summary of GPS Data for Artifacts and Locations.....	64
Table 6. SLS-2 (48YE2205) Summary of GPS Data for Artifacts and Locations.....	67
Table 7. SLS-2 (48YE2205) Summary of GPS Data for Artifacts and Locations.....	70
Table 8. SLS-4 (48YE2207) Summary of GPS Data For Artifacts and Landmarks	73
Table 9. SLS-5 (48YE2208) Summary of GPS Data for Artifacts and Locations.....	78
Table 10. SLS-6 (48YE2209) Summary of GPS Data for Artifacts and Landmarks	82
Table 11. SLS-29 (48YE2231) Lithic Data for Collected Artifacts.....	85
Table 12. SLS-29 (48YE2231) Summary of GPS data for artifacts	86
Table 13. SLS-30 (48YE2232) Summary of GPS data for artifacts and locations.....	89
Table 14. SLS-45 (48YE2251) Summary of GPS Data for Artifacts and Locations.....	92
Table 15. SLS-42 (48YE418) Summary of Lithic Data for Collected Artifacts	96
Table 16. SLS-42 (48YE418) Summary of GPS data for artifacts and locations.....	98
Table 17. SLS-43 (48YE2249) Summary of GPS Data for Artifacts and Locations.....	103
Table 18. SLS-43 (48YE2249) Collected Artifact Data	103
Table 19. SLS-44 (48YE2250) Summary of GPS Data for Artifacts and Locations.....	107
Table 20. SLS-46 Collected Artifact Data	110
Table 21. SLS-46 Summary of GPS data for artifacts and locations	111
Table 22. SLS-7 (48YE2210) Summary of GPS Data for Artifacts and Locations.....	116
Table 23. SLS-8 (48YE2211) Summary of GPS Data for Artifacts	119
Table 24. SLS-9 (48YE2212) Summary of GPS Data for artifacts and locations	124
Table 25. SLS-10 (48YE2213) XRF and Artifact Analysis Results	129
Table 26. SLS-10 (48YE2213) summary of GPS Data for Artifacts and Locations	130
Table 27. SLS-12 (48YE2215), Artifact Analysis Data.....	133
Table 28. SLS-31 (48YE2233) Summary of GPS Data for Artifacts and Locations.....	137
Table 29. SLS-11 (48YE2214), Summary of GPS Data for Artifacts and Locations.....	142
Table 30. SLS-22 (48YE2225) Summary of GPS Data for Artifacts and Locations.....	148

Table 31. SLS-23 (48YE2226) Summary of GPS Data for Artifacts and Locations.....	151
Table 32. SLS-24 (48YE2227) Summary of GPS Data for Artifacts and Locations.....	154
Table 33. SLS-26 (48YE2229) Summary of GPS Data for Artifacts and Locations.....	160
Table 34. SLS-27 (48YE2230) Summary of GPS Data for Artifacts and Locations.....	163
Table 35. SLS-25 (48YE2228) Summary of GPS Data for Artifacts and Locations.....	166
Table 36. SLS-35 (48YE2238) Summary of GPS Data for Artifacts and Locations.....	169
Table 37. SLS-15 (48YE2218) Artifact GPS Data	171
Table 38. IF-10 Artifact Data.....	173
Table 39. SLS-34 (48YE2237) Summary of Artifact Analysis Results	175
Table 40. SLS-34 (48YE2237) Summary of GPS Data for Artifacts and Locations.....	176
Table 41. SLS-33 (48YE2236) GPS Data.....	179
Table 42. SLS-32 (48YE2234) Summary of GPS Data for Artifacts and Locations.....	183
Table 43. SLS-16 (48YE2219) Lithic Analysis Data	188
Table 44. SLS-16 (48YE2219) Summary of GPS Data for Artifacts and Locations.....	190
Table 45. SLS-17 (48YE2220) Summary of GPS Data for Artifacts and Locations.....	195
Table 46. SLS-19 (48YE2222) Summary of GPS Data for Artifacts and Locations.....	198
Table 47. SLS-18 (48YE2221) Artifact Analysis Results	201
Table 48. SLS-18 Summary of GPS Data for Artifacts and Locations	202
Table 49. SLS-20 (48YE2223) Summary of GPS Data for Artifacts and Locations.....	205
Table 50. SLS-13 (48YE2216) Lithic Analysis Results	209
Table 51. SLS-13 (48YE2216) Summary of GPS Data for Artifacts	209
Table 52. SLS-21 (48YE2224) Artifact Analysis Results	213
Table 53. SLS-21 (48YE2224) Summary of GPS Data for Artifacts and Locations.....	214
Table 54. SLS-14 (48YE2217) Artifact Analysis Results	217
Table 55. SLS-14 (48YE2217) Summary of GPS Data for Artifacts and Locations.....	217
Table 56. SLS-28 (48YE2244) Artifact Analysis Results	221
Table 57. SLS-28 (48YE2244) Summary of GPS Data for Artifacts and Locations.....	221
Table 58. SLS-47 (48YE2253) Summary of GPS Data for Artifacts and Locations.....	227
Table 59. SLS-49 (48YE2255) GPS Data.....	229
Table 60. SLS-36 (48YE2238) Summary of GPS Data for Artifacts and Locations.....	231
Table 61. SLS-37 (48YE2239) Summary of GPS Data for Artifacts and Locations.....	234
Table 62. SLS-38 (48YE2245) Summary of GPS Data for Artifacts and Locations.....	237
Table 63. SLS-39 Summary of GPS Data for Artifacts and Locations.....	240
Table 64. SLS-40 (48YE2247) Summary of GPS Data for Artifacts and Locations.....	242

Table 65. SLS-41 (48YE2248) Summary of GPS Data for Artifacts and Locations.....	246
Table 66. SLS-41 (48YE2248) Lithic Analysis Results	246
Table 67. SLS-48 (48YE2254) Summary of GPS Data for Artifacts	252
Table 68. Snake River Red Obsidian Samples Summary	256
Table 69. SLS-50 (48YE2256) Summary of GPS Data for Artifacts and Locations.....	260
Table 70. SLS-52 (48YE2258) Summary of GPS Data for Artifacts	263
Table 71. SLS-51 (48YE2257) Lithic Analysis Results	267
Table 72. SLS-51 (48YE2257) Summary of GPS Data for Artifacts and Locations.....	269
Table 73. SLS-53 (48YE2259) Summary of GPS Data for Artifacts and Locations.....	274
Table 74. SLS-54 (48YE2260) Lithic Analysis Results	282
Table 75. SLS-54 (48YE2260) Summary of GPS Data for Artifacts and Locations.....	283
Table 76. Summary of UMSLS Site Data and Recommendations	287
Table 77. Summary of Diagnostic Artifact XRF results	289
Table 78. Summary of EDXRF Sourcing Results	289

List of Photographs

Photograph 1. Lewis Canyon with exposed columnar jointing of Lava Creek Tuff.	25
Photograph 2. Lewis Canyon Rhyolite exposed on the northern Snake River Valley	25
Photograph 3. Upper Lewis Canyon Falls	27
Photograph 4. Wildflowers and river terraces above the Snake River.....	28
Photograph 5. Elk skull found near SLS-45	30
Photograph 6 48YE1268 view north showing artifact flagging. Pullout and park sign are to the left, the Snake River is to the right.	56
Photograph 7. 48YE1268, examples of low quality red and black obsidian (welded tuff).....	57
Photograph 8. 48YE1268 view southwest of the Cable Car artifact flagging.....	58
Photograph 9. 48YE1268 Cable Car gear component	58
Photograph 10. (48YE2204) View south/southwest with South Entrance Ranger Station right, and the Snake River to the left.....	63
Photograph 11 View north towards SLS-2 (48YE2205) from parking area, showing trail center.	66
Photograph 12. View east from the center of SLS-2 (48YE2205), towards the Snake River	67

Photograph 13. SLS-3 (48YE2206) View north along trail and Snake River.	69
Photograph 14 SLS-3 (48YE2206) view south along Snake River. South Entrance Ranger Station and Picnic Area, as well as SLS-1 and 2, are located along the steep bank to the right.	70
Photograph 15 SLS-4 (48YE2207) view north along Snake River and lower terrace.....	72
Photograph 16. SLS-4 (48YE2207) View east, with the Snake River visible in the background	73
Photograph 17. SLS-4 (48YE2207) Possible historic hearth at SLS-4, with large red obsidian flake (flake 5).	74
Photograph 18. SLS-5 (48YE2208) View north, flags in the foreground indicate the historic artifact beach concentration. In the background two fishermen and the hot springs at SLS-42 are visible.....	76
Photograph 19. SLS-5 (48YE2208), reverse view of Photograph 12 looking south. A cable is marked in the center, and the fishermen to the left.....	77
Photograph 20. SLS-5 (48YE2208), Red welded tuff and chert bifaces, and small black welded tuff flake	79
Photograph 21. SLS-5 (48YE2208) large orthoquartzite flake.....	79
Photograph 22. SLS-6 (48YE2209) view north along terrace edge showing artifact concentration. SLS-5 is below to the right.	81
Photograph 23. SLS-29 (48YE2231) view NE, showing survey along the sites small rise	84
Photograph 24. SLS-29 (48YE2231) tested Lava Creek obsidian cobble	85
Photograph 25. SLS-30 (48YE2232) view north with the Snake River behind	88
Photograph 26. SLS-30 (48YE2232) View SE towards SLS-42, 43, 44 and 46	89
Photograph 27. SLS-45 (48YE2251) View north towards the pond.....	91
Photograph 28. SLS-45 (48YE2251) view east towards the interior of the site	92
Photograph 29. SLS-45 (48YE2251) large red welded tuff flake	93
Photograph 30. SLS-42 (48YE418) View NW from the sites southern edge, with the Lewis and Snake River Confluence in the background.....	95
Photograph 31. SLS-42 (48YE418) Foothill-Mountain point base	97
Photograph 32. SLS-42 (48YE418) Chalcedony Biface	97
Photograph 33. SLS-42 (48YE418) example of the deep red, non-glassy obsidian sourced to Park Point	97
Photograph 34. SLS-42 (48YE418) large orthoquartzite flake, very similar to others in the area such as SLS-5, in Photograph 15	99
Photograph 35. SLS-42 (48YE418) , view east from hot creek with site on the terrace above .	99

Photograph 36. SLS-42 (48YE418) view NE from site center towards SLS-43 and 44.....	100
Photograph 37. SLS-43 (48YE2249) View south, showing the thermal and boulder feature, with stone circles to the right.....	102
Photograph 38. SLS-43 (48YE2249) Stone Circle with pin flagging, view east towards SLS-44	104
Photograph 39. SLS-43 (48YE2249) Cobble Feature	104
Photograph 40. View east from SLS-43 (48YE2250) towards SLS-44, located on both terraces in the background	106
Photograph 41. SLS-44 (48YE2250) view from trail, site is above to the left and in the background, with the South Entrance Hot Springs to the right	107
Photograph 42. SLS-46 view west with the Snake and Lewis Confluence to the left. SLS-29 and 30 are located on the distant terraces above.....	109
Photograph 43. SLS-46 view east of thermal feature, with SLS-43 and 44 beyond the rise, SLS-42 to the right, and SLS-46 and the Snake River behind.....	110
Photograph 44. SLS-46 Rose Springs LPH side notched base.....	110
Photograph 45. Moose Falls on Crawfish Creek, showing the terrain common in the Lewis River and Crawfish Creek canyons	113
Photograph 46. SLS-7 (48YE2210) western depression, with the trail behind and the Lewis River beyond.....	115
Photograph 47. SLS-7 (48YE2210), showing hiking trail, with the Lewis River to the left.	116
Photograph 48. IF-3 view SW along hiking trail	118
Photograph 49. Biface fragment at IF-3.....	118
Photograph 50. SLS-8 (48YE2211), looking north. All artifacts were located on this small terrace edge.....	119
Photograph 51. SLS-8 (48YE2211) artifacts.....	120
Photograph 52. Welded tuff core from IF-2.....	122
Photograph 53. Petrified wood core from IF-2	122
Photograph 54. View of the Lewis River near IF 1 and 2.....	122
Photograph 55. SLS-9 (48YE2212) Quarry center. The Lewis River is to the left, the hiking trail is above the cliff on the right.	123
Photograph 56, SLS-9 (48YE2212) showing blasting powder tin and drill marks in the cliff face.	125
Photograph 57. SLS-10(48YE2213) Orthoquartzite outcrop	127

Photograph 58. SLS-10 (48YE2213) example of heavily snowflaked and inclusion laden red obsidian.....	128
Photograph 59. SLS-10 (48YE2213) possible rock shelter	128
Photograph 60. SLS-10 (48YE2213) View north from top of cliff, with trail behind and Crawfish Creek in the distance	130
Photograph 61. SLS-12 (48YE2215), excavations, view southeast. Crawfish Creek and Lewis River confluence is behind the trees.....	132
Photograph 62. View east from the terrace bottom and ravine towards the Lewis River.....	135
Photograph 63. IF-5 Basalt Core	135
Photograph 64. SLS-31 (48YE2233) View SW, showing hearth at the bottom left.....	136
Photograph 65. SLS-31 view east, showing crew documenting the cut tree stump with fire hose stapled to it.....	137
Photograph 66. South Lewis Canyon STP's being conducted, view south.....	139
Photograph 67. SLS-11 (48YE2214) View NW, showing cobble features and dense pines	141
Photograph 68. SLS-11 (48YE2214) showing tobacco tin.....	142
Photograph 69. View NW of unnamed falls in the northern section of Lewis Canyon	145
Photograph 70. view NE of the southern edge of the Lewis River Canyon	145
Photograph 71. View SE of the southern Lewis River Canyon.....	145
Photograph 72. SLS-22 (48YE2225) view east across the road, showing ephemeral drainage to the left and the opposing canyon rim in the distance.....	147
Photograph 73. SLS-22 (48YE2225) view NE, down into the canyon from eastern artifact concentration	148
Photograph 74. SLS-23 (48YE2226) view SE towards Lewis Canyon, with the highway off and to the right.....	150
Photograph 75. SLS-23 (48YE2226) view SW showing proximity to South Entrance Road. ...	151
Photograph 76. SLS-24(48YE2227) view southeast, showing ephemeral drainage and Lewis Canyon beyond.....	153
Photograph 77. SLS-24 (48YE2227) obsidian scrapers and other artifacts	154
Photograph 78. View SE of the terrace, showing the braided river and equally steep eastern canyon wall	156
Photograph 79. View east along drainage leading to IF-7 below.....	156
Photograph 80. View east from IF-11 towards the Lewis River, with IF-7 just off to the right...	157
Photograph 81. View north of IF-8	158
Photograph 82. View east from SLS-26 (48YE2229) towards the highway in the distance.	159

Photograph 83. SLS-26 (48YE2229) view west, showing sparse mixed aspen and conifers with open ground.....	160
Photograph 84. SLS-27 (48YE2230) view SW from tapered southern end of pit, showing open setting.	162
Photograph 85. SLS-27 (48YE2230) view SE showing center of site, with pit ream in the background and old road in the foreground.	163
Photograph 86. SLS-25 (48YE2228) view SE towards the road, showing dry drainage	165
Photograph 87. SLS-25 (48YE2228) Flake 1, large red obsidian flake	166
Photograph 88. SLS-35 (48YE2238) View NE along drainage, showing bare ground and boulders	168
Photograph 89. SLS-35 (48YE2238) view SW towards the Lewis River	169
Photograph 90. SLS-15 (48YE2218) View west, showing proximity to road, with river behind.	171
Photograph 91. IF-10 Petrified wood biface. Retouch visible on the right edge in the left image. Large overshot flake visible on right, and cortex can be seen present on the tip.	173
Photograph 92. SLS-34 (48YE2237) View NW towards the Lewis River	174
Photograph 93. SLS-34 (48YE2237) view east	175
Photograph 94. SLS-34 (48YE2237) examples of local obsidian. From left to right, Lava Creek, Warm Springs, Park Point.....	176
Photograph 95. SLS-33 (48YE2236) view SE towards the Lewis River and highway	178
Photograph 96. SLS-33 (48YE2236) view east, showing the gently sloping terrace	179
Photograph 97. IF-9 View east, with SLS-33 behind, showing the drainage	181
Photograph 98. SLS-32 (48YE2234) View east along terrace rise.....	182
Photograph 99. SLS-32 (48YE2234) View west towards the Lewis River and highway beyond	183
Photograph 100. SLS-16 (48YE2219) view NE towards the Lewis River	187
Photograph 101. SLS-16 (48YE2219), concentration of glassy obsidian flakes.....	188
Photograph 102. SLS-16 (48YE2219) Late Archaic Pelican Lake Point Base	189
Photograph 103. SLS-16 (48YE2219) possible hearth at debitage concentration	189
Photograph 104. SLS-16 (48YE2219) View west, showing depression containing the historic dump	190
Photograph 105. SLS-17 (48YE2220) View west towards highway	194
Photograph 106. SLS-17 (48YE2220) View north with the highway off and to the left.	195
Photograph 107. SLS-19 (48YE2222) View west of the pits open center.	197

Photograph 108. SLS-19 (48YE2222) view NE from the sites southern limit, showing boulder pile	198
Photograph 109. SLS-18 (48YE2221) View NW, with the highway behind and to the right	200
Photograph 110. Late Prehistoric Arrow Point.....	201
Photograph 111. Goshen Projectile Point.....	201
Photograph 112. SLS-18 (48YE2221), view south from the site's northeast boundary	202
Photograph 113. SLS-18 view SE from sites eastern boundary	203
Photograph 114. SLS-20(48YE2223) View SE towards the Lewis River	204
Photograph 115. SLS-20 (48YE2223) View west towards highway	205
Photograph 116. IF-6 view north of Lewis Lake.....	207
Photograph 117. SLS-13 (48YE2216) View south showing obsidian cobble	208
Photograph 118. SLS-13 (48YE2216) View north of obsidian outcrop and dense small pines	210
Photograph 119. SLS-21 (48YE2224) view northeast of obsidian outcrop and Lewis Lake. SLS-14 is located at center on the far shoreline	212
Photograph 120. SLS-21 (48YE2224) Large tested cobble left, collected freehand cores right	213
Photograph 121. SLS-21 (48YE2224) view southwest up towards the obsidian outcropping .	214
Photograph 122. SLS-14 (48YE2217) View southwest towards SLS-21, showing open terrace and site with trail right.	216
Photograph 123. SLS-14 (48YE2217) View northwest towards Lewis Lake, showing open but deadfall littered site location.....	217
Photograph 124. SLS-28 (48YE2244) View north with Lewis Channel left, showing trail, pin flagging and STP.	219
Photograph 125. SLS-28 (48YE2244) View east with the river behind, showing STP amongst deadfall and small pines	220
Photograph 126. Lewis Channel IF-1, Showing Possible Hearth, With SLS-28 on the terrace in the distance.....	223
Photograph 127. SLS-47 (48YE2253) Possible Hearth.....	227
Photograph 128. SLS-49 view southwest with site located in trees left of center.	229
Photograph 129. SLS-36 (48YE2238) view north from beach.....	231
Photograph 130. SLS-37 (48YE2239) View southwest, with site center.	233
Photograph 131. SLS-37 (48YE2239) View north along terrace edge and river braid	234
Photograph 132. SLS-38 (48YE2245) view NE along terrace edge.	236
Photograph 133. SLS-38 (48YE2245) View SW, showing artifact flagging	237

Photograph 134. SLS-39 View SW showing survey along terrace edge	239
Photograph 135. SLS-39 Tested grey-green orthoquartzite cobble	240
Photograph 136. SLS-40 (48YE2247) View SW showing artifact documentation along terrace	242
Photograph 137. SLS-40 (48YE2247) View NE showing canyon wall forming the sites northern boundary	243
Photograph 138. SLS-40 (48YE2247) View NW of investigated possible rock shelter, just SW of SLS-40, showing the canyon rim above	243
Photograph 139. SLS-41 (48YE2248) documentation of artifacts along terrace rim, view east with the Snake River in the distance	245
Photograph 140. SLS-41 Late Prehistoric Rose Spring Point	246
Photograph 141. SLS-41 (48YE2248) View SW. The projectile point was found on the rocky bluff right of center, with the steep canyon wall off to the right.	247
Photograph 142. Camp 8C6 showing environmental setting around Snake Hot Springs.....	249
Photograph 143. SLS-48 (48YE2254) View north, showing tree-throw containing artifact.....	251
Photograph 144. SLS-48 (48YE2254) View SW up Mosquito Creek, showing exposed bank wall. Artifact is above to the right.	252
Photograph 145. IF-2 View west along trail, showing the Mosquito Creek crossing.....	254
Photograph 146. IF-2 View west, with Mosquito Creek behind	254
Photograph 147. view southwest of Snake River confluence with Forest Creek	255
Photograph 148. View south along Forest Creek	255
Photograph 149. Park Point Sample #1	256
Photograph 150. Park Point Sample #2.....	257
Photograph 151. View NW from the Snake Hot Springs meadow, showing canyon walls in the distance.....	258
Photograph 152. Snake Hot Springs view east, showing thermal vent	258
Photograph 153. SLS-50 (48YE2256) View northeast along the Snake River	259
Photograph 154. SLS-50 (48YE2256) View north, showing the long axis of the meadow, with the campsite behind.....	260
Photograph 155. IF-1 View NE, with crew at artifact to the right.	262
Photograph 156. IF-1, four pieces of the broken orthoquartzite cobble	262
Photograph 157. SLS-52 (48YE2258) view NE, with SLS-51 on the terrace above.....	263
Photograph 158. SLS-52 (48YE2258), a large multicolored (red, white and blue) orthoquartzite flake	264

Photograph 159. SLS-51 (48YE2257) View east, with camp 8C6 off and to the left in the meadow below.....	266
Photograph 160. SLS-51 (48YE2257) stone circle.....	267
Photograph 161. SLS-51 (48YE2257) view SW, with SLS-52 below to the right, with bedrock and boulders in foreground.....	268
Photograph 162. SLS-51 (48YE2257), showing a pin flag amongst very thick vegetation.....	268
Photograph 163. IF-5 Close-up of hearth.....	271
Photograph 164. IF-5 view west of tent area and hearth, with the modern camp off to the right.....	271
Photograph 165. Bones, clockwise from bottom left: 1) large bones with possible butcher marks; 2) eroding bone in situ; 3) survey of eroding bank and bone fragment.....	272
Photograph 166. SLS-53 (48YE2259) View SE from site terrace.....	273
Photograph 167. SLS-53 (48YE2259) view south of open meadow, with the Snake River in the background.....	274
Photograph 168. SLS-53 (48YE2259) View East, with cave and deep pool to the bottom left, and the knoll and site to the right.....	275
Photograph 169. View SE from the canyon rim.....	277
Photograph 170. View SE across open meadow, with SLS-54 not visible in the distant center.....	277
Photograph 171. IF-4 orthoquartzite cobble and bone fragment.....	279
Photograph 172. Possible rock cairn west of IF-4.....	279
Photograph 173. SLS-54 (48YE2260) viewed from across the Snake River. Artifacts are located on the slightly higher terraces to the left, dissipating towards lower elevations and Coulter Creek to the right.....	280
Photograph 174. SLS-54 (48YE2260) view east along the long axis of the peninsula, with Coulter Creek in the distant center.....	281
Photograph 175. SLS-54 (48YE2260) examples of mixed material types, with possible abrader left.....	281
Photograph 176. SLS-54 (48YE2260), two orthoquartzite broken bifaces.....	283
Photograph 177. SLS-54 (48YE2260) artifacts, showing density and variety of surface finds.....	284

Chapter 1. Project Description and Undertaking

The University of Montana conducted two field seasons of archaeological survey along the Lewis and Snake Rivers in southern Yellowstone National Park in the summers of 2013 and 2014, shown in Map 1. The first season focused primarily on the Lewis River, from the South Entrance of the park to Lewis Lake, with an additional small portion of the northern bank of the Snake River. The 2014 season had a primary focus on the Snake River, and is part of the ongoing Snake River Headwaters Project. The second season completed survey of the northern bank of the Snake River up to the confluence with Coulter Creek, and on the southern bank from the South Entrance to backcountry campsite 8C6, near the Snake Hot Springs. The second season also finished the remaining Lewis River channel between Lewis Lake and Shoshone Lake. Survey identified 54 previously undocumented historic and prehistoric archaeological sites (36 in 2013 and 18 in 2014), along with 16 isolated finds. The crew also identified two low quality obsidian outcrops that are likely to have been utilized as quarries, as well as an orthoquartzite outcrop and isolated tested cobbles of both materials.

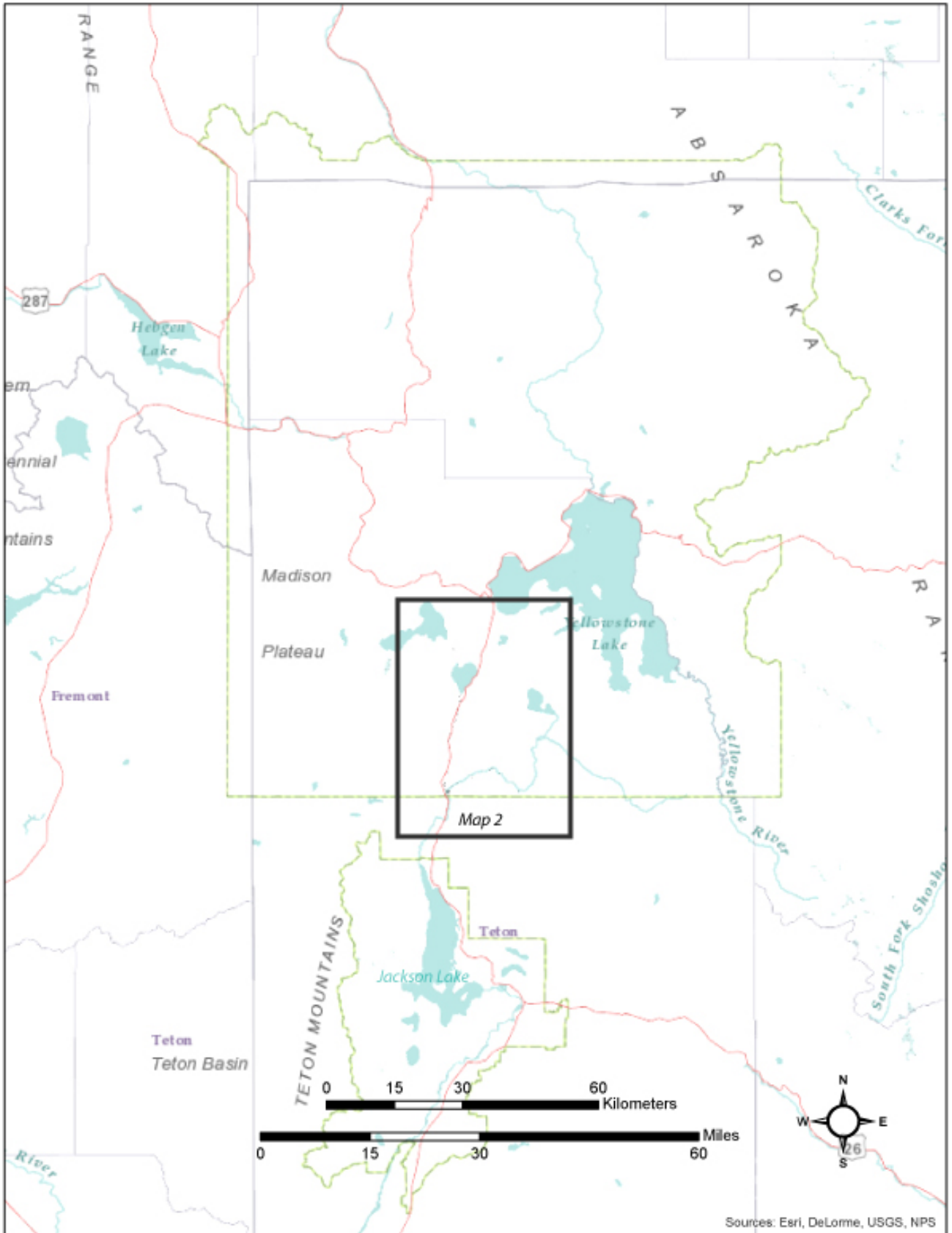
Survey and evaluation was conducted along the Snake and River shoreline where possible, and along canyon rims and high terraces when not feasible or when site potential was unlikely in shore areas such as floodplains. Approximately 41km (25.5 miles) of both sides of the Lewis River were surveyed, and about 23.5km (14.6 miles) of the Snake River, for a total of 64.5km (40 miles) for both seasons. Approximately 33km (20.5mi) of the Snake River still remain to be surveyed in the park, with proposed survey in 2015 to cover the 6.1km (3.7mi) of the Snake River's southern shore up to Coulter Creek

The survey corridor, with four field members, was approximately $\pm 40\text{m}$ wide, depending on terrain. The University of Montana surveyed a total of around 16 sq. km., or 3954 acres. The entirety of the Lewis River was inventoried from its headwaters at Shoshone Lake to its confluence with the Snake River, with the exception of a 4km section above the eastern bank of the Lewis Canyon, where accessibility was difficult and site potential low. Along the Snake River, a 1.75km section along the northern bank, west of Forest Creek, was not surveyed due to steep canyon walls and dense willow banks. On the southern bank of the Snake River, from campsite 8C6 to Coulter Creek has yet to be surveyed to time constraints, as well as the remainder of the Snake River upstream from Coulter Creek to its headwaters in the eastern portion of the park. These areas and landscape features are visible in Map 2 below.

The field crew for both years of survey included Dr. Douglas MacDonald and student crew members Matthew Nelson, Michael Ciani, Stocky White, Brandon Bachman, Ethan Ryan,

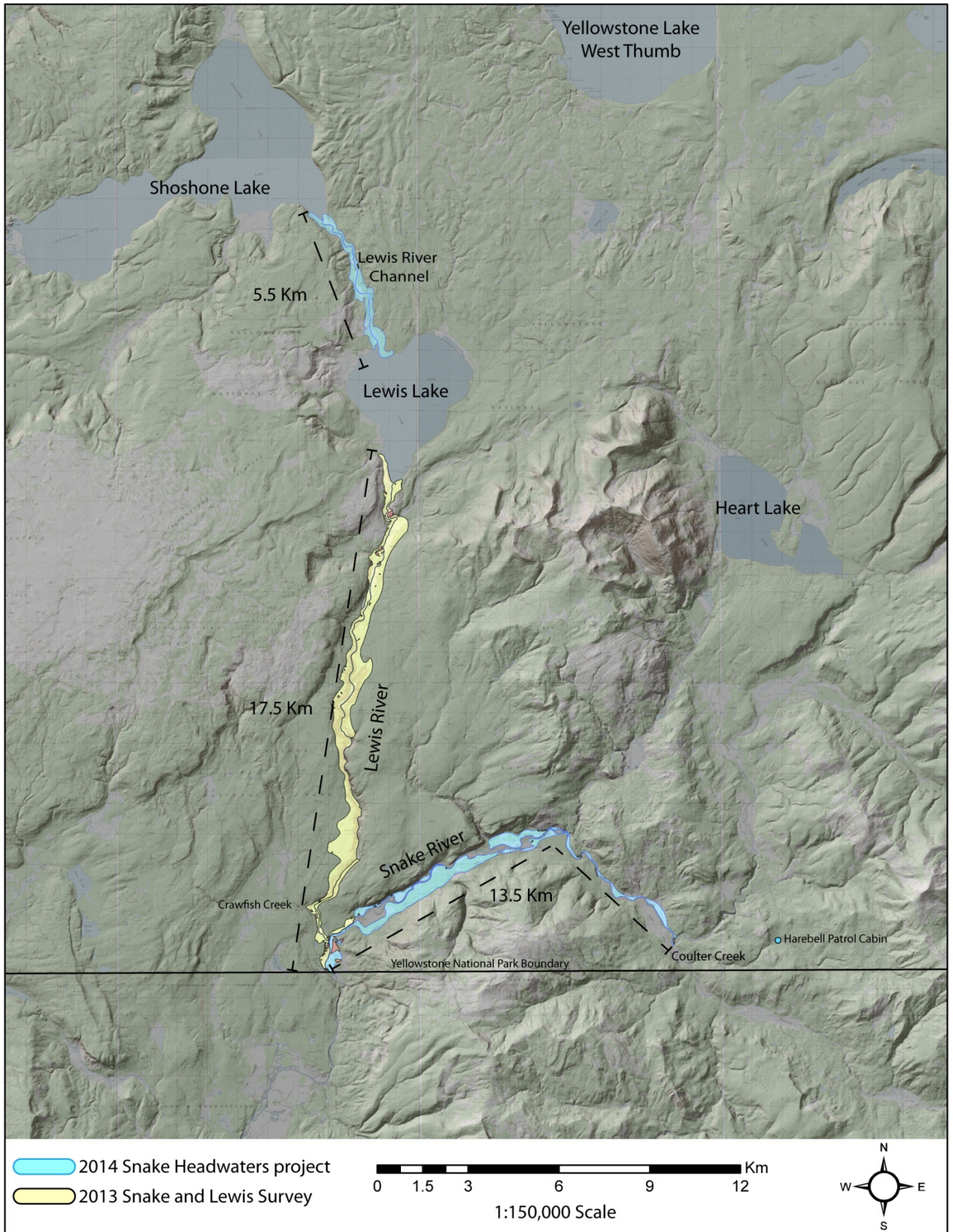
Elizabeth Lynch, and Justin Pfau. The crew at any given time consisted of only four or five of the above members. The vast majority of this survey was conducted out of a base camp located at Grant Village on the West Thumb of Yellowstone Lake, where a RV was provided, courtesy of the park and Steffan Peterson. From there, the crew commuted out to survey locations, using two vehicles to facilitate one directional pedestrian travel. The final section of survey on the Snake River was conducted out of Backcountry Campsite 8C6. Considerations for future surveys further up the Snake River may include a pack train to facilitate the ability to have excavation equipment available to investigate sites further.

During survey, the surface was inspected by walking slowly with the crew online at about 10m, for a total of 40 to 50m in width. All artifacts were marked with pin-flags upon identification. Once a site was identified, close interval survey of the surrounding area was conducted to identify site boundaries. The crew then delegates the tasks of documenting artifacts and terrain features with GPS, taking photographs, making sketch maps and conducting detailed survey. Three areas with poor surface visibility but very high site potential were shovel pit tested, although no test units or further excavations were conducted or warranted at the time. Field notes were then digitized at the University of Montana between field seasons by the projects graduate students. Artifact analysis was conducted by Dr. MacDonald, Ph.D., and Martin Lopez, with Richard Hughes conducting EDXRF geochemical sourcing.



Sources: Eeri, DeLorme, USGS, NPS

Map 1. Project Area Overview in Yellowstone National Park



Map 2. Snake and Lewis Survey Overview

Chapter 2. Environmental Setting

This chapter provides brief overviews of regional geology, climate, flora & fauna, prehistory, and general setting for the Snake and Lewis Survey and Snake Headwaters Project. These sections provide an overall context for presenting the results of archaeological research in later chapters, and includes regional information as well details of the unique setting of the Snake and Lewis Rivers.

Geology

The 2013-2014 UM archeological studies were conducted near the Snake and Lewis Rivers in the southern portion of Yellowstone National Park, and therefore we focus on a description of the environmental conditions south of Yellowstone Lake. Located mostly in the northwestern portion of Wyoming with some parts in Montana and Idaho, the Yellowstone Plateau was formed through a series of volcanic eruptions and lava flows between approximately 2.1 million and 70,000 years ago during the Pleistocene. Elevations range dramatically within Yellowstone National Park, from lows of ca. 5,300 ft. above mean sea level (AMSL) in the far northern areas of the park near Gardiner, Montana, to highs of greater than 12,000 ft. amsl in some mountain ranges in the park. The Pinedale Glaciation was the last glacial period in Yellowstone. Although separate from the North American ice shield, the Yellowstone Plateau glacial icecap covered almost the entire Yellowstone area with a relatively flat mantle of ice that began melting as the climate warmed around 14,000 B.P. and was virtually gone by 12,000 B.P. (Hale 2003). The Lewis River is a direct result of glacial carving and the following runoff, while the Snake meanders through more ancient corridor less impacted by the ice sheet.

Lewis Falls marks the edge of the Lava Creek Caldera, to the north and west of which is overlain primarily with the Central Plateau Member of rhyolitic lava from the most recent post-caldera eruption, the Pitchstone Plateau. South of Lewis Falls the canyon moves into the Lava Creek Tuff, dropping around 105m (350ft) into the canyon (Fritz and Thomas 2011). This creates impressive canyon walls, waterfalls and rapids, shown in Photograph 1. The Lava Creek Tuff overlies the Lewis Canyon Rhyolite (Photograph 2) which lie of pre-caldera formation Mesozoic and Paleozoic sedimentary rocks (Fritz and Thomas 2011).



Photograph 1. Lewis Canyon with exposed columnar jointing of Lava Creek Tuff.

The Snake River is geologically quite different than the Lewis River. While the Lava Creek Tuff and Lewis Canyon Rhyolite form impressive canyon walls and cliffs on the northern side of the Snake River valley, the majority of the river corridor meanders through Mesozoic and Paleozoic sedimentary formations (Fritz and Thomas 2011). This is likely why there is prominence of orthoquartzite artifacts at sites on the Snake River and near its confluence with the Lewis River. Both rivers also contain scatters of thermal features, most notably east of the Snake and Lewis Confluence, and the Snake Hot Springs.



Photograph 2. Lewis Canyon Rhyolite exposed on the northern Snake River Valley

Physiography

The elevation of the Snake and Lewis River survey areas ranges between about 6,800 and 7,800 ft. AMSL. This elevation range is consistent with the majority of elevations across the Yellowstone Plateau proper, which averages 8,000 ft. AMSL (NPS 1991). The survey area encompasses three main physiographic settings: 1) river terraces and floodplains with rolling pine hills most common near the South Entrance; 2) steep sided canyons and alpine foothills associated with the caldera rim and the Lewis Rivers central section; and 3) the open riparian river braid systems with high, ancient terraces located on the Snake River, and also the southern and northern reaches of the Lewis River. The Lewis River has dramatic canyon formations which cut through many rhyolite and welded tuff formations, with little evidence of substantial channel migration at any point along its route.

The Snake River on the other hand, while still containing sections of steep canyon, has much more visible evidence of continuous modern and ancient channel migration, and even abandonment of some segments, and creations of new ones. This type of braided, meandering river channel has formed extensive terrace landforms upon most of which are the locations of prehistoric lithic scatters.

Hydrology

The Lewis and Snake Rivers are both dramatically affected by spring runoff and summer drought, which drastically affect water levels. The Lewis River obtains most of its flow from Lewis Lake, which can remain frozen as late as June, creating massive runoff episodes during the late spring and early summer. Other sources that feed the Lewis River are small ephemeral drainages which occur frequently along the canyon rims, occasionally experiencing blow-out episodes during snow melts. The only major tributary to the Lewis River is Crawfish Creek, entering from the west. Several waterfalls exist on the Lewis River; best known in the highly trafficked Lewis Falls, but there are also the equally impressive Upper and Lower Lewis Canyon Falls, which are two cascade falls with heights just under 100ft (Marcus et.al.). Visible in which are generally not easily visible or accessible for modern visitors.

The Snake River has the second highest annual total runoff of any river in the park, after the Missouri River, with the highest peak cubic feet per second (Marcus et. al. 2012). Unlike the Lewis River, the Snake River is not connected directly to a lake, and is fed primarily by small year round and ephemeral tributaries. However, Heart Lake, 4km north of the Snake River at its

nearest point, provides several tributaries; Heart River, Basin Creek and Red Creek. Forest Creek also enters the Snake River from the north, but is not connected to Heart Lake, and shows evidence of massive runoff and flooding episodes. Tributaries from the south include another powerful runoff location at Mosquito Creek (termed by the University of Montana crew), and Coulter Creek, as well as some other small unnamed tributaries.



Photograph 3. Upper Lewis Canyon Falls

Flooding and high water in the Snake River cause shore erosion and channel shifting on an annual basis, as opposed to most of the Lewis River, where high waters do occur but are generally contained by steep canyons and high terraces which maintain the channel.

Climate

According to Despain (1990), average precipitation on the interior ranges of Yellowstone Park falls between 30-50 inches depending on the elevation. A majority of this precipitation comes in the form of winter and spring snow accumulation (Despain 1990). However, YNP states that generally the higher elevations of the park receive much more precipitation on average around 150 inches per year just for snow. This snow fall has the ability to linger within the higher elevations into late spring at a depth of several feet as noted on visits to the park by project members in March. A couple feet of Late spring-early summer snow accumulation is also possible as late as mid-April as seen during the spring of 2010 as storms were expected to deposit several feet of snow in the Yellowstone Area.

The southwestern corner of Yellowstone National Park and into Grand Teton National Park generally receives significantly higher amounts of precipitation than elsewhere in the region (Marcus et.al. 2012). The Snake River Plain funnels moisture into the Tetons and the Yellowstone Plateau, making these areas relatively wet in the winter and spring compared to other parts of the park (Marcus et.al 2012) Historically the Snake and Lewis River areas are consistent in temperature with other regions in and around the park, with low extremes in the mid -40s and high extremes in the high 90s, but averaging around 0 degrees to 75 degrees

annually. The 2013-2014 field seasons both experienced dramatic weather, with traffic-halting hail in July and sweltering 90 degree days in September.

Flora

Yellowstone National Park is home to a tremendous variety of flora, represented by more than 1,350 species of vascular plants (NPS 2010). The presence of two major parent materials for soil, rhyolite and andesite, as well as a lesser contribution from windblown glacial material, loess, provide a foundation for the spatial variance of plant life within the region. These materials yield soils with differing mineral content and water-holding capacities that cater to particular types of plants (Despain 1990:137-150). Fluctuations in elevation, precipitation, and topography also help to shape the patterns of plant life found throughout Yellowstone National Park, lending to a nearly unparalleled diversity in habitats.

The majority of the Snake and Lewis River corridors consist of mixed conifer forests. These forests are generally dominated by lodge-pole pine, but also contain varieties of spruce, fir and aspen. Some areas have been heavily burned and are marked by old growth large deadfall and short young regrowth. Other areas have not been burned, most notably on the southern bank of the Snake River, where extremely dense mixed conifer forests are choked with new growth trees and shrubs with thick deadfall.

While the Lewis River in particular generally consists of young pines and short bunch grasses on alluvial loams or rhyolitic gravel, the Snake River presents a more diverse suite of

flora and vegetation zones.

Floodplain zones along the Snake River are often thick riparian areas when not open beach, and contain thick tall grasses, but are sometimes choked with sandbar willows.



Photograph 4. Wildflowers and river terraces above the Snake River

Intermediate river terraces generally contain sparse pines with open grassy meadows containing impressive arrays of wildflowers, especially Castilleja, or Indian Paintbrush. Other terrace formations along the Snake River are extremely dense pine forests, as previously mentioned, which show no evidence of recent or historical burns, creating a diverse and densely populated vegetative habitat along the Snake River.

Fauna

Yellowstone has a diverse ecosystem, which is currently home to many large mammals; bison, elk, moose, big horn sheep, deer, antelope, grizzly and black bear, mountain lions, coyotes, and wolves. In addition to these varied large game species, a variety of birds and other small animals are also present in the region. A vast majority of Yellowstone's bison are seasonally migratory and move to the higher elevation during warmer weather and lower elevation during cold weather pattern as with most of the large ungulate species in the foothill-mountains. These migrations are generally from the lower wintering valleys and basins around the park to the higher elevation summer ranges within the park (Cannon 2001).

Snowfall during the fall, winter and spring months causes animal migration to lower elevations generally beginning in October to areas with less than two feet of snow accumulation (Osborn 1993). A study observed animals unable to maximize feeding potential without a significant energy loss as the cause for the move to lower wintering elevations, a model that is applicable across all upland areas of the Rocky Mountains (Osborn 1993). Heavy snow in the uplands of the Intermountain region make, "mid range latitudes uninhabitable during winter" meaning a group "must make base camp in adjacent valley foothills or mouths of canyons" (Madsen and Metcalf 2000: xi).

The portion of the park involved in the Snake and Lewis Survey is outside of the known annual range for bison, whose annual range generally only progresses as far south as Old Faithful (Marcus et.al. 2012) The terrain and accessibility of the survey area suggest that the Snake and Lewis river corridors are sub-optimal for Yellowstone's large game. Both rivers exhibit steep canyons and hills, dense forests and shrub land, unstable gravelly slopes and marshes, and a general lack of large meadows capable of supporting substantial herds.

**Photograph 5. Elk skull
found near SLS-45**

While no elk were seen by the field crew in 2013-2014, the project area does fall within the summer migration ranges of some herds, there is strong evidence for their presence in the form of large antler sheds and skulls. Moose were observed in 2014 in the riparian zones of the Snake River. Traditionally moose populations in the park are low, with less than 200 currently, as reported by the National Park Service website (NPS 2015).



Between 1979-2009 the region of the Snake and Lewis Rivers within the park had the lowest number of female grizzly bear sightings and observed grizzly bear deaths in the park (Marcus et.al 2012). While no bears were observed there were frequently bear prints in the sandy shorelines and mud, as well as the hiking trail along the Snake River. Although wolves of the Bechler pack were reported in 2006 to have been occupying the southwest corner of the park, outside of the project area (Marcus et.al. 2012), most maps show the Snake and Lewis region as unoccupied. The University of Montana field crew and recent reports have identified some wolves occupying the Snake River Valley. During survey large and small wolf prints were identified on and near the pack trail, especially near the crossing of Mosquito Creek.

Observed smaller fauna along the Lewis and Snake River consisted primarily of small rodents, especially varieties of tree squirrels and chipmunks. At some sites populations of ground squirrels, moles and voles, such as SLS-5 or 46, expose many of the artifacts. Beaver dams and large beaver deadfall were observed along both rivers. Grouse are present in the underbrush, possibly white-tailed ptarmigan, and a variety of warblers, chickadees, nuthatches and other small birds. Waterfowl were uncommon in both river corridors, although a variety of sandpipers, sometimes known as killdeer, were frequently upset by survey of the shoreline along the Snake River. Also, sand hill cranes were observed on the eastern shore of the Lewis River. Both rivers support populations of Mountain Whitefish and Yellowstone Cutthroat, with non-native species of brook trout and brown trout (Marcus et.al. 2012). The largest observed population was that of small garter snakes which occupied much of the cobble shoreline of both

rivers. Prehistoric survival in this area in its modern state does not support the traditionally viewed reliance of hunter gatherers on bison, but would require more intensive exploitation of smaller game, fishing, and patience for hunting the rare elk or moose.

Prehistory

In order to provide a context for the description of archaeological findings, we provide a brief summary of the prehistory of the area. This section is brief and we refer the reader to the University of Montana *Yellowstone Archaeology* volumes on northern Yellowstone (MacDonald and Hale 2011) and southern Yellowstone (MacDonald and Hale 2013) for in-depth summaries of the prehistoric context of the various regions of interest to the YUMAP.

Following Frison (1991), Hale (2003), and MacDonald (2012), we organize the following culture history into six chronological periods, including: Paleoindian (11,000 to 8,000 years ago); Early Plains Archaic (8,000 to 5,000 years ago); Middle Plains Archaic (5,000 to 3,000 years ago); Late Plains Archaic (3,000 to 1,500 years ago); Late Prehistoric (1,500 to 300 years ago); Contact and Historic Period (300 years ago to present).

The Upper Yellowstone River Valley was in constant use over thousands of years by hunter-gatherer populations from all over the northern Rockies and northern Plains. The Yellowstone River—both its southern and northern branches provide a natural corridor or conduit for the migration of animals and people following resources along the valley (Davis et al. 1995; Hale 2003). Native Americans traveling from the Snake River Plain to the southern Yellowstone River arrived at Yellowstone Lake's southern shore, while those traveling southward along the upper Yellowstone River from Montana arrived at its northern shore.

The continued use of similar landforms, or the same landforms, by prehistoric groups, especially in the intermountain regions around YNP is well documented in archaeological research. High altitude upland valleys and foothills in the Greater Yellowstone region show a continued occupation by hunter-gatherer populations throughout the last 10,000 years B.P. (Baumler et al. 1996; Bender and Wright 1988; Frison et al. 1976; Kornfeld et al. 2001; Meltzer 1999; Reeves 1973; Short 1999a, 1999b; Smith and McNees 1999). Sites like Osprey Beach (Shortt 2001), Fishing Bridge (Reeve 1989), and the Donner Site (Vivian et al. 2007) detail the continued use of the upland areas of the park since at least 9,000 years ago. Through absolute and relative dating techniques, these intermountain areas have proven to be habitable living locations for these groups for thousands of years. Knowledge of continued land use is important in order to understand settlement patterns of prehistoric populations in intermountain

regions over time; however, understanding the use of the upland regions of the park by the same cultural groups living on the Plains come with its challenges.

A majority of the archaeology sites in the park consist of ephemeral or short-term camps used for lithic reduction activities or hunting. The remains of these open-air campsites consist mainly of lithic debitage scattered over a utilized area with possible features such as hearths or boiling pits. Archaeology surveys along the first 10 miles of the Yellowstone River north of Fishing Bridge resulted in almost 100 of these ephemeral lithic scatter sites (Reeves et al. 2006; Sanders 2013; Sanders et al. 1996; Shortt 1999c). Several dozen more lithic scatters or “chipping stations” have been documented around Yellowstone Lake with the highest concentration occurring between the Fishing Bridge peninsula heading south along the western shore to the Bridge Bay local; results of UM’s prior studies at Yellowstone Lake are available in MacDonald Hale 2013. Additional lithic scatters have been identified sporadically along the East Entrance Highway and on the east shore of the Lake (Livers and MacDonald 2012). Survey along the southern shoreline of Yellowstone Lake has resulted in the identification over more than 150 prehistoric sites (Vivian et al. 2007; MacDonald 2014; MacDonald et al. 2012), adding even more evidence to support the extended use of Yellowstone Park during prehistory.

Yellowstone is a diverse landscape evident of over 10,000 years of use by prehistoric groups. From projectile point to tipi rings, the evidence for prehistoric use and occupation of this unique Intermountain area of the Rocky Mountains is everywhere.

Paleoindian (12,000 to 8,000 years ago)

The early prehistory of Yellowstone National Park is a period of human colonization of a previously uninhabited landscape. The earliest known occupation in the Yellowstone region is the Clovis culture, radiocarbon dated from 11,500 to 10,900 years ago. The Clovis people would have been the first groups to traverse Yellowstone country, hunting all available game, but especially mammoths and mastodons, until about 10,900 years ago. At this time, due to circumstances that we do not quite understand, these large game disappeared; however, the people did not go away. They simply adapted their lifeways and hunted the remaining large game, including now extinct forms of bison, *Bison antiquus* and *Bison occidentalis*. These Goshen and Folsom hunters started a subsistence practice that continued until approximately 8,000 years ago. At this time, during the Early Archaic period, the hot and dry Altithermal kicked into gear, reducing both the overall size of bison as well as the size of the bison herds. People switched to a variety of other game and plants during this period.

Only two known Clovis points have been recovered within park boundaries. The first discovery was by UM in 2007 at the Yellowstone Bank Cache Site (24YE355) along the Yellowstone River (MacDonald et al. 2010). However, the point was likely secondarily deposited at the site, either from upland slopes or by later site occupants via recycling. In 2013, UM recovered a fluted (probably Clovis) point at a site along the southernmost shores of Yellowstone Lake (MacDonald 2013). Just north of the Yellowstone park boundaries, a Clovis point recovered was from the construction of the Gardiner Post Office (Janetski 2002). Approximately 100 miles north of the project area, the Anzick Clovis Cache yielded a wealth of data regarding Clovis burial and cache behavior in the northern Plains (Lahren 2006).

As with Clovis, the Folsom and Goshen complexes rare in YNP and this portion of the Yellowstone River basin. UM recovered a Teton Pass obsidian Goshen-like point during archaeological survey just south of Lewis Falls in the southern portion of the park. The Folsom cultural complex dates to approximately 10,800 to 10,300 years before present, and the culture is characterized by a subsistence pattern oriented toward bison hunting (MacDonald 1999; Hill 2007). A Folsom point found in the Bridger-Teton National Park south of Yellowstone was sourced to Obsidian Cliff, indicating that Folsom individuals clearly entered the park to collect stone (Cannon et al. 1997) as early as 10,900 years ago (Frison 1991). An unfluted Folsom or Plainview point, geochemically similar to stone from Obsidian Cliff, was recovered during archaeological excavation on the shores of Yellowstone Lake (Cannon and Hughes 2003). The Folsom component of the Indian Creek Site also yielded obsidian sourced to Obsidian Cliff in YNP (Davis and Greiser 1992).

Folsom culture persisted in Montana and the Great Plains until approximately 10,200 years ago. At that time, archaeological data indicate that individuals ceased to use Folsom points, in favor of Agate Basin and Hell Gap stemmed lanceolate points and, subsequently, a variety of other unfluted point types. Agate Basin and Hell Gap archaeological components are mostly focused south of Montana, persisting until approximately 9,500 years ago. As of the writing of this culture history, no archaeological sites in Montana have yielded Agate Basin or Hell Gap archaeological components. Nevertheless, several Agate Basin and Hell Gap style points have been collected across the state, suggesting a sizable presence. Although the location is unknown, the oldest recognized projectile point collected from the interior of YNP was described as Agate Basin like. It has been dated in other locals outside of the park at 10,500-10,000 B.P. (Taylor et al. 1964; Cannon and Hughes 1993).

UM has recovered numerous Late Paleoindian Cody and Foothill/Mountain complex projectile points around the perimeter of Yellowstone Lake. The oldest documented site in YNP

is the important Cody Complex site at Osprey Beach (48YE409/410) and although younger than Clovis, Goshen, and Folsom phases, provides overlapping data to support the change occurring at the terminal Paleoindian Period (Johnson et al. 2013).

Osprey Beach is located at the mouth of Solution Creek and extends for over a mile along the shoreline west of the creek outlet on the southern shore of West Thumb, the western most extent of Yellowstone Lake. Several Early Archaic Bitterroot Side-notched and Middle Archaic McKean projectile points were also collected, successfully filling in the occupation gap between the Paleoindian and Late Archaic Periods (Johnson et al. 2004). A radiocarbon date retrieved by Pierce (Shortt and Davis 2002) from a charcoal lense eroding from the shoreline below the cultural deposits of the site returned a date of 9,360±60 B.P. solidifying the date of the Cody Complex components.

In addition to more than 20 Late Paleoindian points recovered by UM at Yellowstone Lake, a dacite Cody knife was found inland on Stevenson Island (Sanders 2001), Yellowstone Lake's largest island, suggesting a means of transport around the lake (Johnson et al. 2013). MacDonald et al. (2012) support the hypothesis of island access over frozen ice in early spring or early winter, however.

Early Plains Archaic (8,000 to 5,000 years ago)

By the end of the Paleoindian period—approximately 8,000 years ago—Plains Native Americans embraced a diverse subsistence pattern and used the atlatl in hunting (MacDonald 2013). A variety of notched projectile points dominate lithic artifact assemblages from all three sub-divisions of the Archaic, including: Early Archaic - 8,000 to 5,000 B.P.; Middle Archaic - 5,000 to 3,000 B.P.; and the Late Archaic – 3,000 B.P.

The Archaic period is characterized by a decline in bison use during the Early Archaic, an increase by the end of the Middle portion, and a dramatic increase during the Late Archaic portion. This change over time largely is due to dramatic environmental shifts over the course of the Archaic Period. Projectile point technology changed over time, with the use of large side-notched points in the Early Archaic, bifurcated points during the Middle Archaic, and smaller side- and corner-notched points in the Late Archaic. This chapter provides a description and analysis of the archaeological record of the Early Archaic period in Montana and the northern Plains and Rocky Mountains

One of the hallmark characteristics of the Early Archaic period is a lack of well-excavated archaeological sites and an apparent decline in human population. Early Archaic

sites are as rare as Paleoindian sites and are also less visible, due to a decreased reliance on bison hunting. This decreased role of bison hunting was largely due to the decreasing herd populations as a result of the emerging altithermal climatic period (Antevs 1953; Dean et al. 1996; Wolfe et al. 2006). The altithermal or hypsithermal period is characterized by comparatively hot and dry climate, resulting in decreased forage for bison. Bison teeth that date to the Early Archaic period are badly worn, suggesting more dry grass and grit in their forage. Surface water was likely reduced during this time and springs and summers were likely much warmer than during the previous Late Paleoindian period.

One Early Archaic site important to discuss is the Fishing Bridge Point Site (48YE381) located southwest of the Fishing Bridge area. This site was the first and only excavated site in Yellowstone Park to provide an Early Archaic occupation date based on a radiocarbon sample date from a buried hearth feature (MacDonald et al. 2011, 2012). Site 48YE381 was formally excavated during the summers of 2009 and 2010, providing excellent depositional stratigraphy from which to examine distinct episodes of prehistoric occupation along Yellowstone Lake from the Early Archaic through Late Prehistoric Period.

Blood residue analysis of the Early Archaic point indicated its use on both bovine and possibly caparrid (identified in initial test; not in a repeated second test). The presence of caparrid indicates use of the point in plant processing. In particular, the likely species of caparrid is Rocky Mountain bee weed, *Cleome serrulata*. Bee weed was utilized by Native Americans, but typically in lower-elevation, hotter and dryer settings. This plant is not native to the lake area, but can be found on south-facing slopes of hotter, dryer portions of the Rocky Mountain front. Likely locations of procurement would be the lower Madison Valley to the west, the Gardiner Basin to the north, or the Shoshone Valley to the east of Yellowstone Lake (MacDonald and Livers 2012).

William Mulloy (1958) was the first to suggest that humans abandoned the hot and dry open Plains in favor of uplands and water sources such as river valleys. MacDonald (2013) summarizes data from the Early Archaic in the Yellowstone region, supporting some aspects of a human abandonment hypothesis. There is a very clear decline in archaeological sites in the Plains and Montana between 8,000 and 5,000, suggesting that Mulloy's abandonment theory may have some validity. Current research adds validity to Mulloy's (1958) idea but general trends associated with hunter-gatherer mobility and subsistence patterns do not function properly across the vast extent of the Plains due to variation in Altithermal effects (Meltzer 1999). Water would have dried up in some places and not others (Meltzer 1999; Yansa 2007) while bison populations might have varied in location and size based on available resources

(Frison et al. 1976; Reeves 1973). In the southern Great Plains, Meltzer (1999) has recorded archaeological sites with excavated wells, suggesting an extreme water shortage.

Pollen samples from the greater Yellowstone region do show a warming trend during the Altithermal period beginning around 7000 BP and becoming increasingly drier with the evidence from increased grass pollen counts while tree pollen decreased (Whitlock and Bartlein 1993: 232). Pollen samples from other locations on the Northern Plains also suggest aridity of upland regions with the retreat of tree lines around 6500 – 6000BP (Greiser et al. 1985), dates consistent with Yansa's (2007: 135) work on the Eastern Plains region showing the greatest drought period occurring on the upper Plains starting around 6000BP. Even though the Altithermal period affected the entire Plains region in some fashion, "The impact of middle Holocene climate change seems relatively inconsequential" in the Northern Plains region (Meltzer 1999: 413). Numerous sites in the region are evident of Archaic use of high altitude locations during the Altithermal showing these areas were not marginal environments, even during environmental stresses (Baumler et al. 1996; Bender and Wright 1988; Kornfeld et al. 2001; Shortt 1999a).

Although sites in the region point to area use, the archaeological evidence from the Greater Yellowstone Area and other upland areas do show general trends thought to be a result of Altithermal stresses. These trends include, increased diet breadth based on heavy processing (Greiser et al. 1985; Meltzer 1999), a move to higher elevations or resource rich areas (Bender and Wright 1988; Frison et al. 1976; Meltzer 1999; Smith and McNees 1999; Walthall 1998), and decreased mobility with the introduction of pit houses (Meltzer 1999) or other semi-permanent features like stone lined ovens (Bender and Wright 1988; Meltzer 1999; Smith and McNees 1999). Numerous sites in the region are evident of archaic use of high altitude locations during the Altithermal showing these areas were not marginal environments, even during environmental stresses.

Middle Plains Archaic (5,000 to 3,000 years ago)

The Middle Plains Archaic period in the region lasted from approximately 5,000-3,000 years ago. The Middle Plains Archaic—otherwise referred to as the MPA or Middle Archaic—is best characterized as a time of transition, from the diversified economy of the Early Plains Archaic. The Middle Archaic period is characterized by more varieties of projectile points on the Northwestern Plains, including several with bifurcated bases such as Oxbow and McKean. Variations in a number of other categories such as technology, social and economic

organization, as well as settlement strategies during this period should be expected due to the nature of short term and long-term changes (Hoffman 1997).

The initial portion of the MPA is largely a continuation of trends begun during the Early Plains Archaic, including use of a diverse subsistence base, site furniture, and heightened use of foothills and mountains. At the beginning portion of the MPA—between 5,000 and 4,000 years ago approximately—Native Americans also increased their use of subterranean pit houses in eastern Montana and western Wyoming. However, by the end of the period—between approximately 4,000 and 3,000 years ago—Native Americans began to transition back to a Plains bison hunting culture.

The Airport Rings site (24YE357), along the Yellowstone River in the Boundary Land area of YNP exhibits several of the characteristics noted within the Middle Archaic Period. Even though it is difficult to accurately associate buried cultural materials with surface materials, the excavations at Airport Rings uncovered a partially slab lined, rock filled roasting pit inside one of the rings, with a date correlating to the beginning or time immediately before the Middle Archaic Period (Livers 2011; Livers and MacDonald 2010). As well as the radiocarbon C-14 date gained from the hearth sample, point chronologies consistent with the Oxbow tradition make the Airport Rings hearth, as far as the information available from stone circle literature, the earliest date for a hearth found within a stone circle by several hundred years. All three of these sites begin to substantiate claims for the use of tipis, or some sort of portable structure, aiding in the initial rise of bison hunting in the Middle Archaic Periods.

The gradual transition back to bison hunting not coincidentally coincides with the re-emergence of substantial *Bison bison* herds to the northern Plains. After 5,000 years ago until the period of contact with Europeans, Native Americans hunted bison as the staple of their diet, but continued to hunt and gather other wild resources, especially in the mountains. For example, at the Mummy Cave site near Cody, Wyoming, Big Horn sheep were the focus of hunting for all of prehistory. Blood residue on projectile points from Yellowstone Lake Area sites also reveal a wide range of blood proteins—not just bison—suggesting adaptation to the diverse ecosystem of the lake area.

Prior to the 2009 excavations at The Fishing Bridge Point Site on the west shore of Yellowstone Lake, the earliest radiocarbon dates from prehistoric occupations in the park came from the Middle Archaic Period. Middle Archaic radiocarbon dates have been recovered from the Arnica Creek Site along the West Thumb (Cannon and Hale 2013), Chittenden Bridge Site (48YE516) on the Yellowstone River approximately 12 miles northwest of Fishing Bridge (Cannon et al. 1994), the Airport Rings Site (24YE357) along the Yellowstone River in the

Gardiner Valley (Livers and MacDonald 2010), along the Gardner River (Shortt 1999a), and from the First Blood Site (48YE449/457) along the north shore of West Thumb (Cannon and Hale 2013).

Late Plains Archaic (3000 to 1500 years ago)

Native Americans across Montana, southern Alberta/Saskatchewan, the Dakotas, and Wyoming, once again focused upon bison as the focal point of their subsistence patterns. This period marks the emergence of the classic Plains Bison Hunting Culture, including the use of buffalo jumps and corrals that dominate the archaeology of the region. The Late Archaic period also witnessed the first use of pottery, the widespread use of tepees, trade of obsidian and Knife River flint across the U.S., and the last stand for atlatls as the weapon of choice for natives utilizing YNP. The Plains Bison Hunting Culture emerged as the way of life for many Montana Native Americans. This culture, or way of life, continued virtually unaltered (in basic form) until the time of European-American contact a few hundred years ago.

Late Archaic human populations in Montana and Wyoming were sustained by the intensification of bison procurement. Bison hunting on the Plains during the Late Archaic was not a passive enterprise. While introduced and used sporadically during preceding time periods, bison jumps and corrals were used all over the Northwestern Plains and Rocky Mountains with increased intensity beginning 3,000 years ago. Buffalo jumps required a complex arrangement of features, including bison aggregation areas with water, open areas conducive for driving bison, and the cliff itself. Some bison jumps also incorporated corral structures into the hunt.

As such, Native Americans actively altered their environment to facilitate their subsistence success, building drive lines—comprised of hundreds of large rocks organized into two parallel lines—for dozens of miles from the jump and occasionally building corrals to trap the animals once driven over the precipice. Montana was the center of the bison-jumping universe, with thousands of such locations spread across the Big Sky state. Park Superintendent Norris (1880) noted the presence of a wooden fence several feet high in the Swan Lake Flat area of Gardner's Hole during his tenure and described it as a probable Indian game drive system for deer or elk in the area. Norris (1880) approximated the length of the wooden fence at several hundred feet with it ending at the edge of Rustic Falls where the animals probably fell off the cliff of the falls. Also during this period, prehistory groups in the region began to utilize fire as a range management tactic for grassland rejuvenation or even to

drive game (Shullery 1997). Use of fire inside the park is not evident and was not likely employed, but evidence of multiple grass fires from tree scars suggest groups in the area did practice grassland burning in the lower elevation foothills around the Yellowstone Plateau (Shullery 1997).

Bison was a commodity across the Plains and Native Americans actively traded bison meat, hides, and tools with neighboring groups that were unable to regularly hunt bison. In addition to bison products, Plains Native Americans traded a variety of other goods during the Late Archaic period. In particular, Knife River flint from North Dakota and Obsidian from Yellowstone National Park have been traced to Woodland-period archaeological sites—especially those of the Hopewell culture—in Ohio, Pennsylvania, and Michigan, among other states, during the Late Plains Archaic (Davis et al. 1995).

While most of these goods are thought to have been transported indirectly via down-the-line trade from the Plains and Rocky Mountains to the Midwest and eastern United States, DeBoer (2004) proposes that some individuals within the Scioto River Hopewell culture of Ohio actively travelled to Montana and Wyoming to obtain rare goods for use in ceremonies. Such goods include obsidian, Knife River Flint, bison, as well as Big Horn Sheep horns, among other unique Plains and Rocky Mountain items. Hundreds of archaeological sites within the Mississippi, Ohio, and Missouri River Valleys, among others, contain obsidian from Wyoming, Idaho, and Montana (DeBoer 2004; Davis et al. 1995).

Other tools were employed to facilitate the high mobility of bison hunting, as Plains Native Americans increased their use of portable hide structures for shelter during the Late Archaic. These hide structures—sometimes referred to as tepees (tipis)—can be identified by the presence of stone circles. Millions of stone circles marking the former locations of Native American lodges (living and spiritual, both) can be found in Montana. Their easy identification (most of the time!) likely also has resulted in increasing site counts dating to this time period. Stone circles were used with increasing frequency during the Late Archaic period and the subsequent Late Prehistoric but the exact period for skin-covered lodge adoption remains unknown.

In addition to the diagnostic projectile points, several other important technological innovations occurred during the Late Archaic period. Several have been discussed, including: 1) the adoption of stone circles (tipis) as the main form of shelter; 2) widespread use of buffalo jumping/corraling; and 3) widespread trade ties to areas outside of the Great Plains and Rocky Mountains and, in particular, to areas of the Midwest during the terminal portion of the Late Archaic.

Two other important innovations are recorded in Late Archaic archaeological sites as well. First, sites dating to the Late Archaic period have some of the earliest examples of well-preserved perishable goods. Sites like Spring Creek Cave, Wyoming, have yielded projectile points still hafted to wooden atlatl dart shafts. These sites allow us to interpret all Archaic notched projectile points (Early, Middle and Late Archaic varieties) as likely dart points (as opposed to spear or arrow tips). Another important technological innovation of Late Archaic tribes is the first—albeit limited—use of pottery. Besant pottery is rare in Montana, but is found on occasion dating to between 2,000 and 1,500 years ago in sites in the northern tier of the state (especially in the northeast corner). Besant pottery in Montana likely is derived via trade and cultural contact with emerging village groups in the Missouri River Valley to the south and east.

Besides pottery, many of these changes are evident from the archaeological record in the uplands of Yellowstone Park. Pelican Lake points have been recovered on the ground surface and from excavations in many areas, constituting a majority of Yellowstone's Late Archaic sites as well as artifacts (Johnson 2002, Hale 2003; MacDonald and Maas 2011; Sanders 2013).

Late Archaic sites are plentiful in the Hayden Valley north of Yellowstone Lake, as well as within the Yellowstone Lake basin. MacDonald and Hale (2013) and Sanders (2013) report on numerous Late Archaic sites in these areas.

Two burials known to exist in Yellowstone Park were associated with the Late Archaic period on the Fishing Bridge Peninsula (Wright et al. 1984). Other human remains have been recovered from Yellowstone's west lakeshore at site 48YE220, but not in a burial context. These remains were discovered eroding out of the shoreline and reported by visitors in 1996. The site is located on the sandy area of an ephemeral outwash channel on the only geographic point 4.8km southwest of Rock Point. Three diagnostic skeleton elements were collected, including one femur, part of the skullcap, and one vertebra. The Wyoming coroner's lab determined the remains to be approximately 1,000 years old.

Late Prehistoric (1500 to 300 years ago)

There are numerous archaeological sites of Native American origin in the Greater Yellowstone Area, some that have become world famous such as Mummy Cave, located just 13 miles east of the East Entrance to the Park (Husted and Edgar 2002). While the number, composition, and specifics of each site is large and varied, in general most of the more contemporary sites, dating from about A.D. 1500 onward, are of Crow, Salish, Nez Perce or

Shoshone origin. Ethnographically use of Yellowstone Lake includes several other tribes. Following Bradford et al. (2003), several native groups claim ancestral ties to Yellowstone Lake itself include the Kiowa (Gunnerson and Gunnerson 1971: 14; Mooney 1979), Shoshone (Dominick 1964; Wright 1978), and Apache (Perry 1980). The Late Prehistoric period is indicated by a fairly dramatic increase in stone circle use (Livers 2011), as well as the innovation of the bow and arrow, resulting in a decrease of projectile point size. Looking at the radiocarbon sequence of dates from YNP indicates a rapid rise and peak in the number of dates around 1200 to 1000 years ago (Frison 1991: 111).

Intermountain pottery, though not as pervasive as the new weapon technology, appears in the region and is found throughout the Canadian provinces, Wyoming, Montana, Utah, Idaho and southern Colorado (Frison et al. 1996). Various types of prehistoric pottery were utilized in Montana, with both Shoshone (Intermountain) and Crow varieties being the most common, especially in the Upper Yellowstone Valley area. Tom Jerde (1987) documented at least a dozen sites containing pottery evidence along Tom Miner Basin and Paradise Valley to the north of the park.

Many of the hallmarks of the Late Holocene, such as side-notched arrow points, pottery, and wider use of plants and animal resources are found along the Yellowstone River north of the park. However, many other hallmarks of the period, such as bison drives and jumps, sheep and pronghorn traps, aggregations of domestic stone circles, winter habitation sites, horticulture evidence by bison scapula hoes, rock art, medicine wheels, and variations in pottery styles (Frison et al. 1996) have yet to be found in YNP. As mentioned earlier when discussing fauna, little to no remains are found within the YNP proper due to the nature of the soil. Yet, one unique site does exist and is the only prehistoric sheep and elk bone bed recorded in YNP. This bone bed comes from the terminal Late Archaic-early Late Prehistoric component of the Malin Creek Site (24YE353) along the Black Canyon of the Yellowstone (Vivian et al. 2008).

While the Late Plains Archaic—3,000 to 1,500 years ago—marks the emergence of the Plains Bison Hunting Culture, the Late Prehistoric period—1,500 to 300 years ago—can be defined as its heyday, a time in which bison hunting reigned supreme all over the northern Great Plains. Bison hunting escalated in intensity, with many more locations being used for hunts, many more individuals participating in the complex organization of bison hunting, and many more bison being hunted during the Late Prehistoric compared to the Late Archaic. Instead of dozens of animals at a bison jump as during the Late Archaic, Late Prehistoric bison kills often have hundreds of animals, evidence of a heightened intensity of bison procurement during the last 1,000 years prior to European contact.

The Late Prehistoric period is best characterized as an era of increasing cultural complexity, both in the intensity and organization of the buffalo hunt and in the emergence of sedentary villages supported by the harvest of a variety of resources. The emergence of sedentism marks an important first for the Late Prehistoric period. Prior to this time, everyone in the Great Plains and Rocky Mountains were strictly mobile hunter-gatherers with a few possible semi-sedentary groups. While most Native Americans in Montana continued to hunt and gather for their subsistence throughout the Late Prehistoric period, they certainly were influenced by Native Americans to their east and west who opted for a largely sedentary lifestyle.

It is during the Late Prehistoric period that we can clearly recognize the presence of specific Native American tribes in Yellowstone, including the Salish, Kootenai, Blackfoot, Crow, and Shoshone. While many more tribes were certainly present, their archaeological signatures are not clearly visible at sites in Yellowstone. Other than excavated archaeological sites, one of the main ways archaeologists identify the presence of tribes is through rock art. A huge variety of rock art is present across Montana and surrounding states and provinces that allows for an enhanced understanding of Native American life beyond hunting and gathering. However, no prehistoric rock art has ever been identified in Yellowstone to aid in the decipherment of tribal use of the area. Suffice it to say that multiple tribes from many regions used the area that the park now resides within.

Contact and Protohistoric (300 to 150 years ago)

Native groups during the Contact period on the Northwestern Plains found themselves face to face with increasing numbers of European homesteaders, pioneers, cattlemen, miners, and others looking to claim land or adventure into unexplored territory to make a new life for themselves (Frison et al. 1996: 37-40). Horses also became common during this period with the possibility of horses introduced to interior Plains as recently as the early 1700's from southern tribes like the Comanche (Ewers 1955). If horses had not been introduced before this time they were during the Protohistoric Period from the first Spanish and French expeditions into the interior. Many ethnographic and historical accounts coming from this period note a wide variation in cultural practices between the various tribes known to live and use the GYA. These accounts detail differences in such things as horse use over foot travel, types of domestic structures, and even diversity in beliefs.

According to Crow explanations for how they became a discrete ethnic group on the Plains they have a story of how one of two brothers, No Intestines, was directed to look for

seeds of the sacred tobacco during his vision quest. During his wanderings, he took his people over much of the Great Plains, specifically passing through a place “where there is fire”, perhaps Yellowstone National Park or a fiery coal pit (Nabokov and Loendorf 2002 quoting Voget 1984). After settling in the Big Horn Mountains, the Crow began to separate into regional subdivisions. Of these, the largest was the Mountain Crow, who consider (and still claim) the region near present-day Yellowstone National Park as part of their aboriginal territory (Nabokov and Loendorf 2002).

In contrast, the Shoshone are often considered the only “permanent” residents of Yellowstone National Park. It is important to understand that “permanent” does not mean sedentary, but that a significant portion of their semi-nomadic lifestyle took place within Yellowstone National Park (Nabokov and Loendorf 2002). Historic evidence describing non-horse using groups in the park around the 1800’s may have been referring to the Shoshone (Davis et al. 1995). This account may possibly provide the answer to the often-asked question of why more tipi rings are not found within the interior of the park and why wikiups are far more evident. Without the aid of a horse or pack animal, tipi lodge poles and hides would be much more difficult to transport, especially into the higher elevation plateaus of Yellowstone where access along water sources may have only been passable by foot.

There are few historic accounts of Native American use in northern Yellowstone National Park after the park’s creation in 1872. This is mainly due to efforts by the early administrators of Yellowstone National Park to downplay or eliminate Indian involvement and usage of the park, done to encourage white tourists to feel safe after the 1877 Nez Perce encounter in the park and the 1878 Bannock War (Nabokov and Loendorf 2002, Introduction, and pp. 103-112). However, there are some relevant accounts. Prior to the park’s establishment, the first Euroamerican sighting of Sheepeaters in the park was from an 1835 account where a trapping party led by Osborne Russel encountered Shoshone in the Lamar Valley (Haines 1996a: 49)

In *Lifeways of Intermontane and Plains Montana Indians* (Davis 1979), Norris’s 1882 superintendent’s report is referenced for the information provided to him by a Shoshone informant concerning the native use of areas in the park. The Shoshone informant said the Shoshone, Bannock, and Crows visited the lake and river areas of the park often, providing a relevant historical account that at least three tribes were historically utilizing the Yellowstone area. In addition, Norris (1882) recorded that the Shoshone and Bannock probably utilized the thermal and hot springs areas in the park for healing purposes, while these areas were not utilized by the Crow or other Plains tribes according to a Crow informant. The notion that native groups did not utilize the park because of the thermal features is highly incorrect as both

artifacts and ethnographic accounts such as these provide direct evidence for the use of these areas.

It is obvious Yellowstone was utilized by native groups up to the late 1800s or the U.S. Army would not have had to patrol the park in the late 1800s and early 1900s. The reason for the assumed lack of Late Prehistoric materials in the archaeological record remains unknown; however, several reasons may contribute to this issue. Little work is conducted with metal detectors in the park when many Late Prehistoric sites contain metal, so the sites are possibly being overlooked or missed during survey. Another factor contributing to the lack of sites could be the 100 years of undocumented collection and looting of prehistoric artifacts from the Park interior.

Chapter 3. Background Research

Since the 1950's substantial archaeological surveys, testing and research have been conducted around the shores of Yellowstone Lake, yet relatively few projects have included work in the Lewis and Snake River Corridors and the southwest corner of Yellowstone National Park (Hale 2013). It has been proposed by investigators such as Gary Wright in 1978 that the river corridors in the southern portion of the park may have served as key travel routes between Yellowstone Lake and the Jackson Hole region as part of a 'northern adaptive territory' (Wright 1978, Hale 2013). Despite this possibility, only a handful of prehistoric sites (n=15) and historic sites (n=6) have been documented throughout this large and isolated portion of the park throughout the past 50 years. Early surveys in the region focused primarily around Heart Lake and Heart River, with a few other sites near the border of Yellowstone National Park and Bridger-Teton National Forest. Table 1 lists the previously identified sites within the region surveyed by the University of Montana 2013 Snake and Lewis River Survey, which addressed the gap in survey between the southern boundary sites and a solitary Lewis Lake site.

The first official surveys in the southwest portion of the park were conducted by Montana State University, now the University of Montana. These surveys were directed by Carling Malouf and Dee Taylor, with fieldwork conducted by crews led by J.J. Hoffman during their seminal work in the late 1950s and early 1960s. Work was inspired by park ranger Wayne Replogle's exploration of the Bannock Trail in late 1940's (Hale 2013) and many of the sites they documented were previously identified by his work (Hoffman 1961). The University of Montana's surveys were large scale and involved extensive portions of the park, and were considered a 'crash program' due to its scope and limited timeframe, as part of the Mission 66 park

development program (Hoffman 1961). While many sites were found (a total of 195), especially in the northern portion of the park, there were two prehistoric sites found in the Snake and Lewis River corridors (Hoffman 1961). 48YE418, located east of the confluence of the Snake and Lewis Rivers near a thermal vent, is a sparse flake scatter of mixed stone types (Hoffman 1958a). The other site, 48YE437, was noted near a swamp on the northeast bay of Lewis Lake but was not investigated beyond Replogle's initial observation (Hoffman 1958b). This site indicates potential for future archaeological research around Lewis and Shoshone Lake.

No new sites were identified in the southwest region throughout the remainder of the 1960's, and extensive surveys didn't resume until Lloyd William's Heart Lake research in 1977. South of the park, the Huckleberry Ridge Fire Lookout was documented by the Wyoming Recreation Commission's Survey of Historic Sites, Markers and Monuments in 1967, located just outside of the park boundary in Teton National Forest. Entered into the register of historic places in 1983, this historic lookout was completed in 1938 and manned in 1939, and saw action during the Sheffield Creek Forest Fire in 1940, when it was evacuated. The lookout became abandoned after 1957, but is the sole remaining fire lookout in the northern portion of Teton National Forest (NPS 1983).

Additional archaeological surveys to the south of Yellowstone National Park were occurring in the Teton National Forest during the early 1970's as part of the John D. Rockefeller Jr. Memorial Parkway construction, with 48TE428 being documented in 1973 by Gary Wright just outside of the Yellowstone Park boundary on the east side of the Snake River. This small flake scatter contained mixed lithic types, including quartzite, obsidian, chert, and ignimbrite (Wright 1973). Ignimbrite is an ambiguous term which refers to a variety of welded volcanic tuff flows, the densely layered bottom of which is often referred to as vitrophyre. These vitreous, or glassy, ash flows may weld in beds to various degrees, sometimes creating inclusion filled welded volcanic tuff obsidian (Gemeno 2003). Past and recent surveys have found an abundance of this type of obsidian being used for tool production in the southern portion of the park. For the purposes of this research, the terminology used by the authors of a given site will be used to identify vitrophyre, ignimbrite, volcanic ash and snowflake obsidian, all of which can be assumed to refer to similar types of welded volcanic tuff obsidian common in this region.

In 1977, Lloyd Williams conducted a more extensive series of surveys in the area around Heart Lake, Heart River and Wolverine Creek under the supervision of Gary Wright, documenting eight lithic scatters. This region was chosen as it is known from historic documents to be part of a migration trail, possibly as part of the larger network of routes between southern Yellowstone and Jackson Hole (Wright 1978). 48YE490 is the largest of these sites, is located

on the north bank of the Heart River and extending to the eastern shore of Heart Lake. This site has several components, which were reevaluated by Kenneth Cannon in 1990 and came to include 48YE1291 and 48YE489. Both Williams and Cannon found many quartzite, chert, obsidian, ignimbrite (vitrophyre for Cannon) and petrified wood flakes. Tools found included one obsidian, one chert, one petrified wood and one vitrophyre projectile point, along with a vitrophyre scraper. These tools were suggested by Cannon to fit within the range of projectile points known as Elko Eared, dating from between 1300 B.C. to 700 AD at Gatecliff shelter in Nevada (Cannon 1990). Located just south of this site along the Heart River is 48YE491, a very small lithic scatter, which contained a worn chert biface. 48YE492, 493 and 494 are located to the southwest of 48YE491, near the confluence of the Heart and Snake Rivers. These are also very small sites, but one chert biface was found at 48YE493, and solitary utilized black ignimbrite flakes at the other two sites. Williams documented three additional sites further to the south near the confluence of the Snake River and Wolverine Creek, just inside the southern boundary and near the Harebell Snowshoe Cabin, discussed below. These sites, 48YE495, 496 and 497 are similarly very small sites with primarily quartzite flakes and one large utilized quartzite flake or biface found at 48YE495 (Williams 1977a-h).

Following Williams work, no extensive surveys occurred in the southwest corner of the park until the 1988 Post-Fire Assessment conducted by the National Park Service. This park-wide survey documented a possible logging camp and dump, 48YE25, just south of Lewis Falls. The dump consists of construction debris including concrete, brick and wood, and is nearby a foundation scar, log piles and possibly a privy pit. Tools, bottles, wire and other artifacts and debris were also found in this camp likely associated with 1940's logging operations (Ayers 1988). In 1989 the Historic American Engineering Record (HAER) conducted a comprehensive study and historical documentation of the road system throughout Yellowstone National Park, called The Yellowstone Roads and Bridges Recording Project. This large scale study included the Crawfish Creek Bridge, 48YE811, which spans Crawfish Creek just north of the South Entrance at Moose Falls. This bridge was constructed in 1936 as part of the parks burgeoning road development program, and was constructed at the same time as the Lewis River Bridge near Lewis Falls. HAER created detailed and measured drawings, conducted formal photography as well as an in-depth historical background investigation of the bridges planning phase and construction (HAER 1989). During the University of Montana's 2013 surveys, two sites were found which are likely associated with the bridge construction, one being a quarry and the other may have been the contractors materials plant, noted in the HAER historical

research as being located just inside the park boundary, on the bank of the Snake River (UMSLS-5).

Archaeology increased after the 1988 fires, when Kenneth P. Cannon with the Midwest Archaeological Center (MWAC) conducted post fire surveys throughout the park from 1989 to 1991 as part of the road reconstruction program (Hale 2013) and as part of the Housing Unit Design Assistance Team (HUDAT) (Cannon 1991). They documented three prehistoric sites in southwest Yellowstone National Park, as well as expanding Williams's 1977 sites 48YE489 and 48YE490. Two of these sites located in 1990 are 48YE739 and 48YE740, which lay along Heart River just northeast of the confluence with the Snake River and sites 48YE495, 496 and 497. These two sites revealed one obsidian projectile point at 48YE739 and a chert biface at 48YE740 with sparse, mixed types of flakes (Cannon 1990a,b). Some confusion was caused regarding Williams 1977 site 48YE490, which was re-recorded and expanded by MWAC but misidentified as 48YE489, resulting in two components, A and B, now 48YE490 and 48YE1291, respectively, while 48YE489 remained the same (Cannon 1990c). Despite this minor discrepancy, it seems clear that the region near Heart Lake was used extensively and what is being observed may be a continuous and expansive occupation, likely as a waypoint and resource locale for users of these prehistoric highways. An additional site documented by Cannon is 48YE58 located just inside of the park boundary, south of the old ranger station and west of the highway, during the 1991 HUDAT project. Lithics consisted of four obsidian, four white chalcedony and two vitrophyre flakes (Cannon 1991).

48YE934, located just inside the park boundary to the south of Heart Lake, contains both historic and prehistoric components. The Harebell Snowshoe Patrol Cabin was documented in 1983 and further in 1997 during Yellowstone National Park historic properties inventories, with the prehistoric component being formally documented during a hazard fuel reduction project in 2003 by park Archaeologist Ann Johnson (Johnson 2003). The cabin was built in 1920 and originally used as a winter patrol base by the United States Army to patrol for poachers, and later for other uses such as wildlife research and fire patrols. It is eligible for listing on the National Register of Historic Places under criterion A and C, for association with the parks resource protection history, as well as unique park cabin construction. The lithic component at the site has likely been heavily disturbed due to construction and years of modern occupation and use. It is also possible that the site was created recently as a result of tourists and rangers moving flakes from elsewhere back to the cabin. Of significance, however, is that all of the documented lithic artifacts consist of small red "volcanic ash" flakes (Johnson 2003).

The most recent survey in the Snake and Lewis River Valleys was conducted in 2001 by the Office of the Wyoming State Archaeologist (OWSA), with surveys led by Paul Sanders and David Reiss documenting two historic and one prehistoric site. 48YE1567 consists of seven abandoned and disconnected historic road sections that constituted the original South Entrance Road. This site has been considered ineligible for listing on the National Register of Historic Places due to a lack of the rustic formal design and materials associated with the park's historic architecture (Reiss 2001). An additional 250 foot segment of the old South Entrance Road, 48YE823 was found adjacent the South Entrance kiosks, and is similarly abandoned and overgrown, and recommended to not be listed on the Register (Sanders 2001a). Cannon also documented a prehistoric lithic scatter, 48YE 1268/48TE1568, which straddles the park boundary, hence the two site names. This mixed lithic scatter is located just south of the kiosks along the Snake River, and consisted of quartzite, chert and both glassy and snowflake obsidian flakes. One projectile point base was sourced to the Teton Pass obsidian source (Sanders 2001b). Sourced flakes were found to originate from multiple sources throughout the Greater Yellowstone Region in addition to Teton Pass, including Lava Creek, Conant Creek, Bear Gulch, Obsidian Cliff and with an overall bias towards the Park Point source, located on the eastern shore of Yellowstone Lake (Sanders 2001b). This is the only site in this southwestern region within the park that has chemically sourced lithic artifacts, and also is the only site listed here that was shovel pit tested. This site is also the suggested location of a historic tram that was used to access the opposite side of the Snake River.

The past surveys mentioned here in the southwest portion of Yellowstone National Park, involving the Lewis, Heart and Snake River corridors, have indicated potentially extensive prehistoric occupations as well as park architecture and construction from its historic development. Lithics found during the University of Montana's 2013 field season followed the trend of past projects by finding a large amount of snowflake obsidian and quartzite flakes and tools as well as historic quarries, gravel pits and dumps. While the University of Montana has begun to fill some of the gaps in these past surveys, there are large tracts of land in the region that have yet to be officially surveyed and hold vast potential for future research.

Table 1. Summary of artifact types from past research

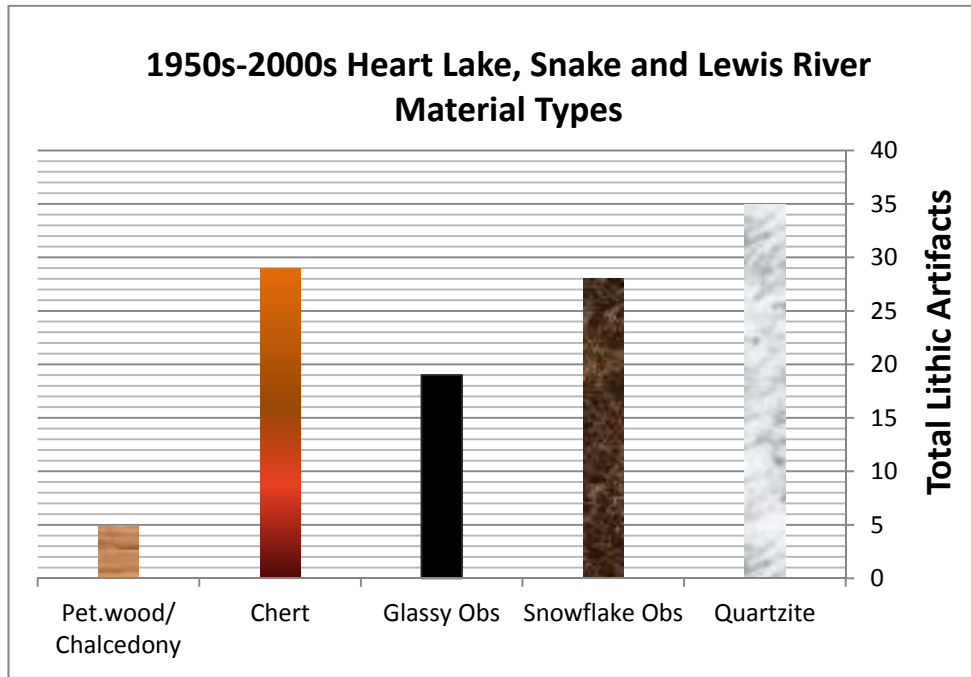


Table 2. Summary of Previously Recorded Archaeological Sites in or near the project area

Site #	P/H	Type	Eligibility	TSR	Record
48YE25	H	Historic Dump/Camp	"non-significant"	T:50N R:115W S:36	1988 J.Ayers and S. Crockett Post-Fire Assessment (NPS)
48YE58	P	Lithic Scatter	?	T:48N R:115W S:9	1991 Cannon (MWAC)
48YE418	P	Lithic Scatter	?	T:48N R:115W S:10	1958 Hoffman (Montana State University)
48YE437	P	Lithic Scatter	?	T:50N R:114W, S:9	1958 Hoffman (Montana State University)
48YE490/1291	P	Lithic Scatter	?	T:50N R:113W S:34	1977 Williams/ 1990 Cannon (MWAC)
48YE491	P	Lithic Scatter	?	T:49N R:113W S:3	1977 Williams
48YE492	P	Lithic Scatter	?	T:49N R:113W S:16	1977 Williams
48YE493	P	Lithic Scatter	?	T:49N R:113W S:16	1977 Williams
48YE494	P	Lithic Scatter	?	T:49N R:113W S:16	1977 Williams
48YE495	P	Lithic Scatter	?	T:48N R:114W S:10	1977 Williams
48YE496	P	Lithic Scatter	?	T:48N R:114W S:10	1977 Williams

48YE497	P	Lithic Scatter	?	T:48N R:114W S:10	1977 Williams
48YE739	P	Lithic Scatter	?	T:49N R:113W S:9	1990 Cannon (MWAC)
48YE740	P	Lithic Scatter	?	T:49N R:113W S:10	1990 Cannon (MWAC)
48YE811	H	Moose Falls Bridge	?	T:48N R:115W S:9	1989 (HAER)
48YE823	H	Historic Road	?	T:48N R:115W S:9/16	2001 Sanders (OWSA)
48YE934	H	Harebell Snowshoe Cabin	Eligible	T:48N R:113W S:7	1997-98 Historic Structures Inventory (NPS)
48YE1268/48TE1568	P	Lithic Scatter	Unevaluated	T:48N R:115W S:9/16	2001 Sanders (OWSA)
48YE1567	H	Multiple Road Segments	Not Eligible	T:47N R:115W S:5,8,20,29 T:48N, R:115W S:9,1,21,28,33,32	2001 Sanders (OWSA)
48TE428	P	Lithic Scatter	?	T:48 R:115 S:16	1973 Wright (J.D. Rockefeller Jr. Hwy)
48TE910	H	Huckleberry Mountain Fire Lookout	Listed in 1983	T:48N R:114W S:31	1967 (Wyoming Recreation Commission)

Chapter 4. Survey Methodology

This chapter provides an overview of the research design and archaeological methods utilized in the survey and evaluation of archaeological sites in the Snake and Lewis River surveys of 2013 and 2014. The methods of archaeological survey and excavation, as well as methods of prehistoric artifact analysis, are described below. In order to help answer the many important questions about the history of the study area, the University of Montana utilized standardized methods of site identification, excavation, and artifact analysis.

Archaeological Survey Methods

The University of Montana archaeological team conducted a systematic surface survey of the project area including all accessible areas along the Snake and Lewis Rivers, or their related canyon rims when not accessible. Groups of four individuals walked in parallel transects along the shore or terrace, extending to 20m intervals, terrain permitting. UM's typical survey width was ca. 40m (130ft). Some areas allowed for several transects to be crossed back and forth, such as open hills or meadows, where others restricted transect width due to vegetation density or terrain constriction.

When archaeological sites were identified, the survey corridor expanded to encompass site limits. When artifacts were identified the team assembled to conduct a detailed examination

of the ground surface around the find spot, expanding in all directions to attempt to identify site boundaries. All prehistoric and historic artifacts were marked with pin flags. Site boundaries and artifact findspots or clusters were delineated and recorded using the GPS unit. Field personnel also recorded a field map of the site in relation to major landforms.

Subsequent to discovery, each artifact identified on the ground surface was mapped by field personnel under the direction of the Principal Investigator, Field Director, and/or the graduate student teaching assistant using forms created for the project. Each cluster of artifacts or individual artifact—depending on lithic or historic artifact density—was photographed in the field and located with the GPS unit. The artifact cluster or individual artifacts were described in field notes and on field GPS log forms to facilitate an overall count of artifacts at the site and to characterize lithic artifact types and materials. Students also recorded attributes such as artifact type, dimensions, color, and raw material for these surface identified artifacts. Diagnostic artifacts were collected for analysis and to help characterize the ages of the sites. Each diagnostic artifact collected in the field received a unique field specimen (FS) number linked to its provenience within the site. Locations of all findspots, including diagnostic and collected artifacts, were marked on field maps. If the artifact was collected, the provenience and descriptive information was recorded on an FS log and upon the plastic collection bag for each artifact. This survey was conducted as low impact, and thus subsurface testing was minimal, and collections were only made if the artifact was diagnostic, sourceable to a unique geochemical signature, or was culturally or geographically unique, such as the orthoquartzite bifaces at SLS-54.

Artifact Analysis Methods

Three main types of artifacts were observed during the Snake and Lewis surveys, including flaked stone artifacts (lithics), faunal remains, and historic artifacts. Most historic artifacts were not collected, but were photographed in the field and documented as to possible type and age, with 48YE1268 as the exception where 18 historic artifacts were collected at the cable car site. The vast majority of prehistoric lithic artifacts were also not collected in the field. Diagnostic projectile points, obsidian source and material samples, and occasional other lithic artifacts of interest were collected for analysis and sourcing. Lithic scatters were recorded in the field as to lithic raw material type and tool type. These areas of lithics were mapped onto the site planview and recorded on a GPS log.

As with many of the sites in Yellowstone, lithics dominated the artifact assemblage. As discussed above, the vast majority of artifacts observed in the field were not collected, but

Chapter 6. Conclusions and Summary

In total the University of Montana surveyed over 60 km of the Snake and Lewis River Valleys. Survey covered river shoreline and canyon rims, revealing 54 total sites and resurveying 48YE1268. 48YE418 was also previously identified, and the University of Montana expanded its site boundaries. Seventeen isolated finds were also documented, consisting of singular lithic artifacts and hearths of unknown age.

Summary of Findings and Recommendations

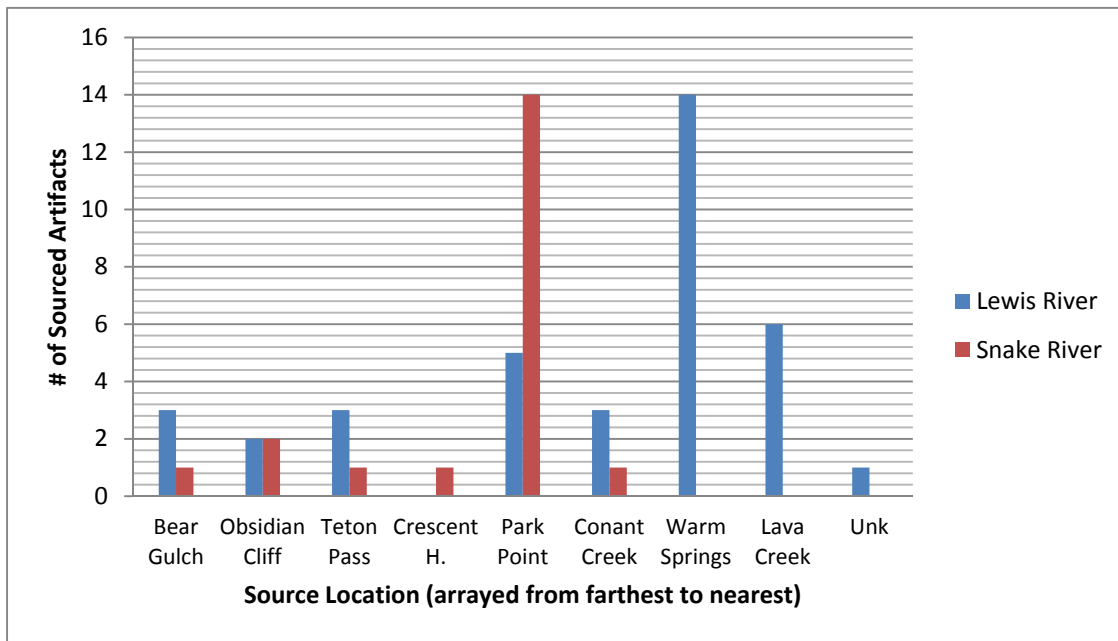
Of the total 54 sites recorded by the University of Montana in 2013 and 2014, 4 are historic sites, 45 are lithic scatters, and 5 are multicomponent sites. In addition, 3 outcroppings of obsidian (SLS-10, 13 and 21) and one of orthoquartzite (SLS-10) were identified along the Lewis River, and two natural obsidian specimens were observed on the Snake River. STP's were conducted at four locations: SLS-12 and SLS-28, as well as non-site locations in the Lewis Canyon and Lewis Falls area. Subsurface finds were insignificant or non-existent. 48YE1268, originally a lithic scatter, was reevaluated and found to contain the remains of a historic cable car. Eighteen artifacts were collected from this location, with dates dating to 1930 and earlier. Aside from this site, no other historic collections were made. Other historic sites were primarily quarries or hearths.

Site information and recommendations for the 54 sites and isolated finds are listed in Table 76. Three sites were identified as eligible for NRHP listing. In addition, 48YE1268 is also recommended eligible in light of reevaluation. SLS-42 (48YE418) was also previously recorded, and the Paleoindian point found there, the many Park Point artifacts, and the expansion of the site boundaries during the 2014 survey suggest this site has a very high potential for future research. There is also potential evidence of prehistoric habitation nearby at SLS-43. The other two sites eligible for NRHP listing under criterion D are SLS-16 and SLS-18. These two sites are less than 500m from each other, but contained all of the diagnostic artifacts found on the Lewis River, which spanned ages from around 11,000 ybp to 1500 ybp. Four sites were deemed not eligible, two historic quarries and two negatively tested sites, SLS-12 and SLS-28. No isolated finds are recommended for future research, although the biface at IF-10 was collected.

SLS-21(48YE2224)	88	Flake	1	Teton Pass
SLS-21(48YE2224)	89	Core	2	Lava Creek?
SLS-21(48YE2224)	90	Tested cobble	2	Lava Creek?
SLS-29 (48YE2231)	91	Flake	1	Warm Springs
SLS-29 (48YE2231)	92	Flake	2	Park Point
SLS-29 (48YE2231)	93	Flake	2	Park Point
SLS-29 (48YE2231)	94	Flake	3	Obsidian Cliff
SLS-29 (48YE2231)	95	Flake	3	Warm Springs
SLS-29 (48YE2231)	96	Flake	4	Conant Creek
SLS-29 (48YE2231)	97	Flake	4	Warm Springs
SLS-29 (48YE2231)	98	Flake	5	Bear Gulch
SLS-29 (48YE2231)	99	Flake	5	Bear Gulch
SLS-29 (48YE2231)	100	Flake	6	Bear Gulch
SLS-29 (48YE2231)	101	Flake	6	Park Point
SLS-29 (48YE2231)	102	Flake	6	Park Point
SLS-29 (48YE2231)	103	Tested cobble	7	Lava Creek
SLS-34 (48YE2236)	104	Flake	1	Lava Creek?
SLS-34(48YE2236)	105	Flake	2	Warm Springs
SLS-34(48YE2236)	106	Flake	3	Lava Creek
SLS-34(48YE2236)	107	Flake	4	UNK
SLS-34(48YE2236)	108	Flake	5	Park Point
SLS-34(48YE2236)	109	Flake	6	Warm Springs
SLS-34(48YE2236)	110	Flake	6	Lava Creek?
SLS-34(48YE2236)	111	Flake	7	Warm Springs
SLS -10 (48YE2213)	CC1	Nat.	5	Lava Creek
SLS -10 (48YE2213)	CC2	Nat.	4	Lava Creek
SLS -10 (48YE2213)	CC3	Nat.	11	Lava Creek
SLS -10 (48YE2213)	CC4	Nat.	13	Lava Creek
SLS -10 (48YE2213)	CC5	Nat.	13	Lava Creek
SLS -10 (48YE2213)	CC6	Nat.	18	Lava Creek
SLS -10 (48YE2213)	CC7	Nat.	19	Lava Creek
SLS -10 (48YE2213)	CC8	Nat.	22	Lava Creek
SLS -10 (48YE2213)	CC9	Nat.	23	Lava Creek
SLS -10 (48YE2213)	CC10	Nat.	24	Lava Creek
SLS-21(48YE2224)	L1	Nat.	1	Lava Creek
SLS-21(48YE2224)	L2	Nat.	2	Lava Creek
SLS-21(48YE2224)	L3	Nat.	3	Lava Creek
SLS-21(48YE2224)	L4	Nat.	1	Lava Creek
SLS-21(48YE2224)	L5	Nat.	2	Lava Creek
SLS-21(48YE2224)	L6	Nat.	2	Lava Creek
SLS-21(48YE2224)	L7	Nat.	3	Lava Creek
SLS-21(48YE2224)	L8	Nat.	3	Lava Creek
SLS-21(48YE2224)	L9	Nat.	4	Lava Creek
SLS-21(48YE2224)	L10	Nat.	4	Lava Creek
2014 Snake River				
Site#	XRF#	Type	FS#	Source
SLS-2014 Red	1	Nat.	-	Park Point
SLS-2014 Red	2	Nat.	-	Park Point
SLS-2014 Red	3	Nat.	-	Park Point
SLS-2014 Red	4	Nat.	-	Park Point
SLS-41 (48YE2248)	5	L. prehistroic Pt.	1	Obsidian Cliff
SLS-42 (48YE418)	6	Early Reduc.	1	Park Point
SLS-42 (48YE418)	7	Flake Frag.	2	Obsidian Cliff

SLS-42 (48YE418)	8	Early Reduc.	3	Park Point
SLS-42 (48YE418)	9	Flake Frag.	4	Park Point
SLS-42 (48YE418)	10	Freehand Core	5	Park Point
SLS-42 (48YE418)	11	Biface Reduc.	6	Park Point
SLS-42 (48YE418)	12	Biface Reduc.	7	Park Point
SLS-42 (48YE418)	13	Decort. Flake	8	Park Point
SLS-42 (48YE418)	14	Ind. Biface	8	Crescent H.
SLS-42 (48YE418)	15	Paleo Pt.	12	Park Point
SLS-46 (48YE2252)	16	L. prehistroic Pt.	1	Teton pass
SLS-54 (48YE2260)	17	Flake Frag.	2	Park Point
SLS-54 (48YE2260)	18	Biface Reduc.	4	Conant Creek
SLS-54 (48YE2260)	19	Biface Reduc.	5	Bear Gulch
SLS-54 (48YE2260)	20	Biface Reduc.	6	Park Point
SLS-54 (48YE2260)	21	Early Reduc.	6	Park Point
SLS-54 (48YE2260)	22	Early Reduc.	7	Park Point
SLS-54 (48YE2260)	23	Ind. Flake	7	Park Point
SLS-54 (48YE2260)	24	Early Reduc.	10	Park Point

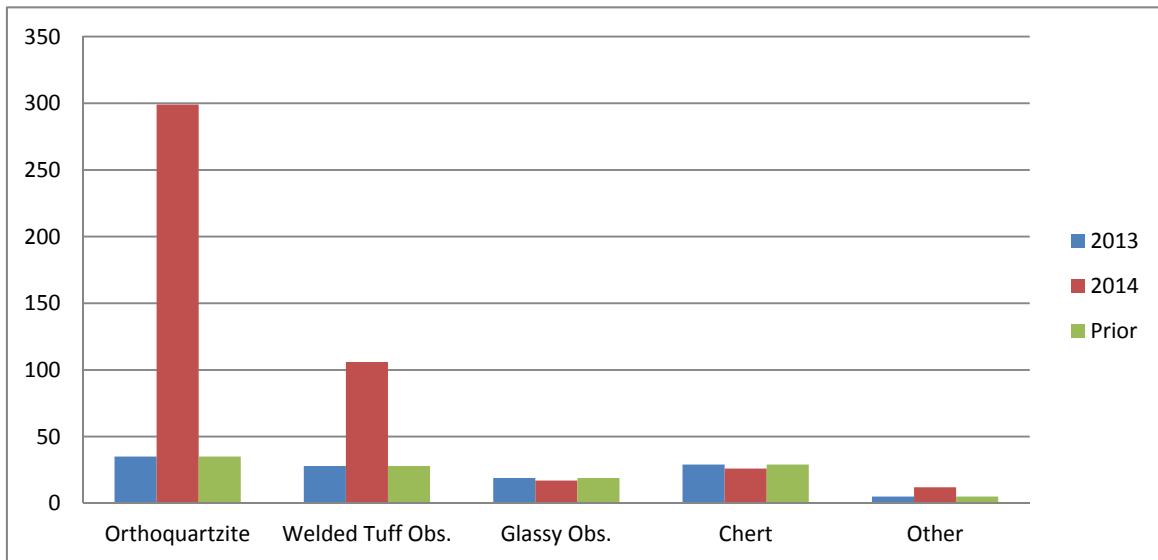
**Figure 62. Summary of EDXRF Results for the Snake and Lewis Rivers
(Corresponds with year)**



Looking at the material types used for lithic tool production also reveals patterns in tool stone preference in the Snake and Lewis Valley's. Most regions of Yellowstone National Park show evidence of a heavy reliance on Obsidian Cliff material and chert, however this survey reveals quite the opposite. Since collections were minimal, the data summarized in Figure 63 is

primarily based on photographs, site forms and GPS logs. However, the many dissimilarities between welded tuff obsidian and high quality glassy obsidian make their distinction possible. It is clear that orthoquartzite is a primary source according to current and passed research, and that low quality local obsidian is generally present where glassy obsidian is not. A further mixture of chert, petrified wood, chalcedony and moss agate are also present. Figures 64, 65 and 66 break down Figure 63 into its components to alleviate bias based on sheer artifact counts

Figure 63. Summary of Material Types for all Lithic Artifacts (including past research)



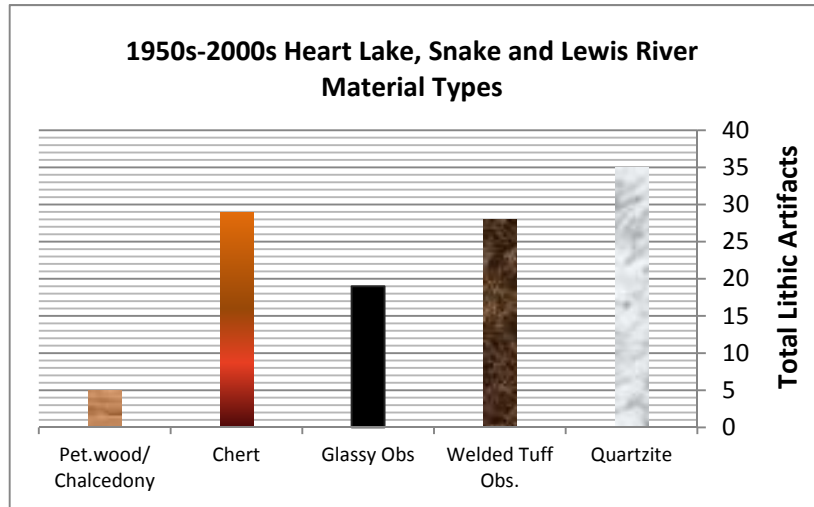


Figure 64

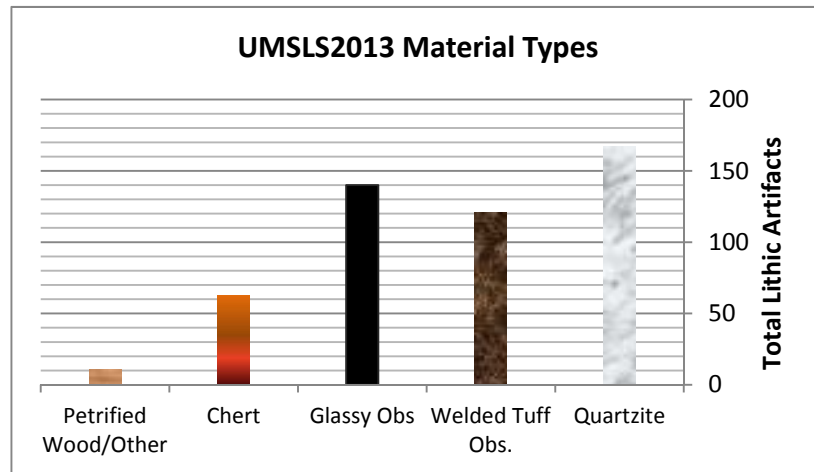


Figure 65

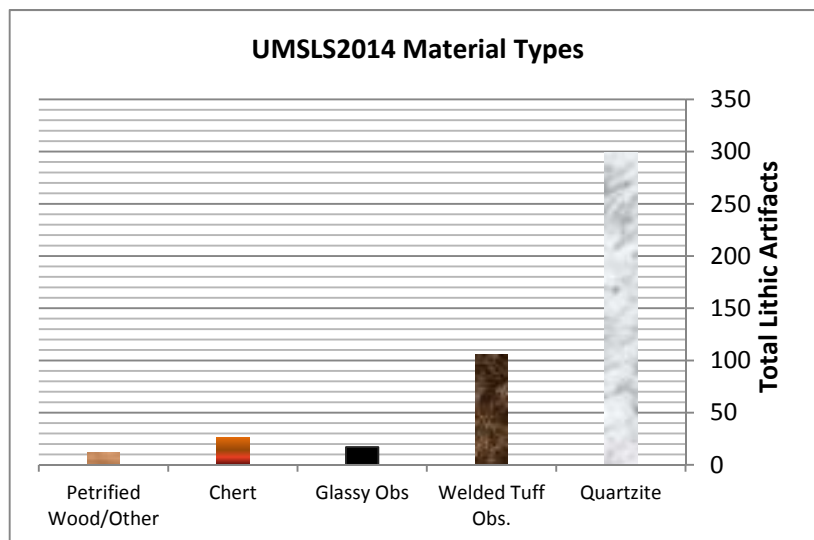


Figure 66

Conclusion

The Snake and Lewis River Survey and Snake Headwaters Project are the result of the Wild and Scenic Rivers designation and NRHP section 110 inventory. In 2013 and 2014 the University of Montana surveyed about 64.5km (40 miles) km of the Snake and Lewis River Valleys. The 2015 field season hopes to address the remaining 6km (3.7 mi) on the southern bank of the Snake River between backcountry campsite 8C6 and Coulter Creek. With this completed, approximately 27km (17mi) of the Snake River Still remain unsurveyed within the park. These upper reaches of the Snake River continue to exhibit evidence of intermediate terraces and river meanders creating high potential site locations such as those found elsewhere in the survey area.

Survey covered river shoreline and canyon rims, revealing 54 total sites and resurveying 48YE1268. 48YE418 was also previously identified, and the University of Montana expanded its site boundaries. Seventeen isolated finds were also documented, consisting of singular lithic artifacts and hearths of unknown age. Three sites as well as 48YE1268 with the cable car are recommended eligible for NRHP listing, and four sites four sites were determined not to be eligible. Two of the four considered ineligible were tested with shovel pits, and the other two are historic gravel pits that lack integrity, craftsmanship and potential for future research.

The two field seasons conducted along the Snake and Lewis Rivers revealed several interesting prehistoric patterns, and showed many natural and cultural differences between this area and other regions of Yellowstone National Park. EDXRF sourcing by Richard Hughes revealed two outcroppings of Lava Creek Tuff obsidian, with a base source from Grassy Lake, south of the park. In addition, sourcing showed a heavy local reliance on Warm Springs, Teton Pass and Park Point obsidian. However, more traditionally thought of sources such as Bear Gulch and Obsidian Cliff were also present. Orthoquartzite was by far the most common tool stone, followed by varieties of welded tuff obsidian. However, a large variety of stone such as chalcedony, petrified wood, chert and moss agate were also employed, showing a large regional diversity not seen in the north of Yellowstone National Park.

References Cited

Antevs, Ernst.

1953 Geochronology of the deglacial and neothermal ages. *The Journal of Geology* 61(3): 195-230.

Ayers, J., and S. Crockett

1988 48YE25 Site Form. On file at the Wyoming State Historic Preservations Office, Cultural Records Office, Laramie, Wyoming

Baumler, Mark F., David C. Schwab, Stephen A. Aaberg, William P. Eckerle, Richard Faflak.

1996 Investigations of Foothill-Mountain Prehistory in the Northern Madison Range, Southwestern Montana: The Flying D Ranch Archaeological Project. *Archaeology in Montana* 37(1): 41-65.

Bender, Susan J., and Gary A. Wright

1988 High-Altitude occupations, Cultural Process, and High Plains Prehistory: Retrospect and Prospect. *American Anthropologist* 90: 619-639.

Bradford, James E., Matthew A. Russell, Larry E. Murphy, Timothy G. Smith.

2003 Yellowstone National Park: Submerged Resources Survey. Submerged Resources Center, Professional Reports Number 16, Cultural Resources Management Professional Paper Number 65. Submerged Resources Center, Intermountain Region, National Park Service, Santa Fe, New Mexico.

Cannon, K. P.

1990a 48YE739 Site Form. On file at the Wyoming State Historic Preservations Office, Cultural Records Office, Laramie, Wyoming

1990b 48YE740 Site Form. On file at the Wyoming State Historic Preservations Office, Cultural Records Office, Laramie, Wyoming

1990c 48YE490/48YE1291 Site Form. On file at the Wyoming State Historic Preservations Office, Cultural Records Office, Laramie, Wyoming

1991 48YE58 Site Form. On file at the Wyoming State Historic Preservations Office, Cultural Records Office, Laramie, Wyoming

2001 What the Past Can Provide: Contribution of Prehistoric Bison Studies to Modern Bison Management. *Great Plains Research* 11: 145-74

Cannon, K.P. and Elaine S. Hale

- 2013 From Arnica Creek to Steamboat Point: Prehistoric Use on the West and Northeast Shores of Yellowstone Lake. In *Yellowstone Archaeology: Southern Yellowstone*, edited by D. MacDonald and E. Hale. University of Montana Contributions to Anthropology 13(2): 92-115.

Cannon, Kenneth P. and Patrick Phillips.

- 1993 *Post-Fire Inventory and Evaluation in Yellowstone National Park, Wyoming: The 1989 Field Season*. National Park Service, Midwest Archeological Center, Technical Report 24, on file, National Park Service, Midwest Archeological Center, Lincoln

Cannon, Kenneth P. and Richard E. Hughes.

- 1993 Obsidian Source Characterization of Paleoindian Projectile Points from Yellowstone National Park, Wyoming. *Current Research in the Pleistocene* 10:54-56.

Cannon, Kenneth P., Kenneth L. Pierce, Paul Stormberg, and Michael Vincent MacMillan.

- 1994 *Archeological Investigation Along the Fishing Bridge Peninsula, Yellowstone National Park, Wyoming: The Archeology, Geology, and Paleoenvironment*. National Park Service, Midwest Archeological Center. Ms. On file, National Park Service, Midwest Archeological Center, Lincoln, Nebraska.
- 1997 *Results of the Archeological and Paleoenvironmental Investigation Along the North Shore of the Yellowstone Lake, Yellowstone National Park, Wyoming: 1990-1994*. National Park Service, Midwest Archeological Center. Ms. On file, National Park Service, Midwest Archeological Center, Lincoln, Nebraska.

Davis, L. B.

- 1979 Lifeways of Intermontane and Plains Montana Indians. Davis ed. *Occasional papers of the Museum of the Rockies #1* MSU, Bozeman, MT 59717.

Davis, L.B. and S.T. Greiser

- 1992 Indian Creek Paleoindians: Early Occupation of the Elkhorn Mountains' Southeast Flank, West-Central Montana. In *Ice Age Hunters of the Rockies*, edited by D. J. Stanford and J.S. Day. Denver Museum of Natural History and University Press of Colorado, Niwot, Colorado

Davis, Leslie B., Stephen A. Aaberg, and James G. Schmitt.

- 1995 *The Obsidian Cliff Plateau Prehistoric Lithic Source, Yellowstone National Park, Wyoming*. National Park Service, Rocky Mountain Region, Selections from the Division of Cultural Resources, No. 6. Denver, Colorado.

Davis, Leslie B. and Charles D. Zeier

1978 Multi-Phase Late Period Bison Procurement at the Antonsen Site, Southwestern Montana. In *Bison Procurement and Utilization: A Symposium*, edited by L. B. Davis and M. Wilson, pp. 222-235. *Plains Anthropologist Memoir* 14.

Dean, Walter E., T.S. Ahlbrandt, R.Y. Anderson, J.P. Bradbury.

1996 Regional Aridity in North America during the Middle Holocene. *The Holocene* 6 (2): 145-155.

DeBoer, Warren D.

2004 Little Bighorn on the Scioto: The Rocky Mountain Connection to Ohio Hopewell. *American Antiquity* 69(1): 85-107.

Despain, D.G.

1990 Yellowstone Vegetation consequences of environment and history in a natural setting. Roberts Reinhart publishers, Boulder, Colorado.

Dominick, D.

1964 The Sheepeater. *Annals of Wyoming* 36:131-168.

Ewers, John.

1955 The horse in Blackfoot Indian Culture: with comparative material from other western tribes. Bureau of American Ethnology Bulletin 159. US Government Printing Office. Washington.

Frison, G. C.

1978 *Prehistoric Hunters of the High Plains*. Academic Press, N.Y. 457pp.

1991 *Prehistoric Hunters of the High Plains*. 2nd ed. Academic Press, San Diego, California.

Frison, G.C, D. C. Schwab, L. A. Hannus, P. Winham, D. Walter, and R.C. Mainfort

1996 Archeology of the Northwestern Plains. I *Archeological and Bioarcheological Resources of the Northern Plains*, edited by G.C. Frison and R.C. Mainfort. Arkansas Archeological Survey Research Series No. 47, Fayetteville, Arkansas.

Frison, George C., M. Wilson, and Diane J. Wilson

1976 Fossil Bison and Artifacts from an Early Altithermal Period Arroyo Trap in Wyoming. *American Antiquity* 41(1): 28-57.

Fritz, William J. and Robert C. Thomas

2011 *Roadside Geology of Yellowstone Country*. Mountain Press Publishing Company, Missoula.

Gimeno, Domingo, Natalia Diaz, Maite Garcia-Valles and Salvador Martinez-Manet

2003 Genesis of Bottom Vitrophyre Facies in Rhyolitic Pyroclastic Flows: A Case Study of Syneruptive Glass Welding (Nuraxi Unit, Sulcis, SW Sardinia, Italy). *Journal of Non-Crystalline Solids* 323:91-96

Gish, Jannifer W.

2013 Archaeobotanical Results from Prehistoric Sites at Yellowstone Lake. *Yellowstone Archaeology: Southern Yellowstone*, edited by D. MacDonald and E. Hale. *UM Contributions to Anthropology* 13(1): 227-257.

Greiser, Sally T., T. Weber Greiser, Susan M. Vetter.

1985 Middle Prehistoric Period Adaptations and Paleoenvironment in the Northwestern Plains: The Sun River Sight. *American Antiquity* 50(4): 849-877.

Gunnerson, J. H. and D. A. Gunnerson

1971 Apachean Culture: A Study in Utility and Diversity. In *Apachean Culture History and Ethnology*. K.H. Basso and M. E. Opler, eds. pp. 7-27. *University of Arizona Anthropological Papers* 21, Tucson.

Hale, Elaine Skinner.

2003 *A Culture History of the Yellowstone River and Yellowstone Lake, Yellowstone National Park, Wyoming and Montana*. M.A. Thesis, University of Montana, Missoula..

2013 Prehistoric Culture History and prior Archaeological Research in Southern Yellowstone. In *Yellowstone Archaeology: Southern Yellowstone*. Vol. 13(2), Edited by Douglas Macdonald and Elaine S. Hale, pp.2-21. University of Montana Office of Printing and Graphics, Missoula, MT.

Haines, Aubrey L.

1996 *The Yellowstone Story: A History of Our First National Park, Volume One*. The Yellowstone Association for Natural Science, History and Education, in association with University Press of Colorado.

Hill, Matthew E., Jr.

2007 A Moveable Feast: Variation in Faunal Resource Ues among Central and Western North American Paleoindian Sites. *American Antiquity* 72(3): 417-438.

Historic American Engineering Record (HAER)

1989 48YE811 Site Report. The Yellowstone Roads and Bridges Recording Project: Crawfish Creek Bridge. On file at the Wyoming State Historic Preservations Office, Cultural Records Office, Laramie, Wyoming.

Hoffman, J. Jacob

1961 A Preliminary Archaeological Survey of Yellowstone National Park. Unpublished Master's Thesis. The University of Montana, Missoula, MT.

1958a 48YE418 Site Form. On file at the Wyoming State Historic Preservations Office, Cultural Records Office, Laramie, Wyoming

1958b 48YE437 Site Form. On file at the Wyoming State Historic Preservations Office, Cultural Records Office, Laramie, Wyoming

Hofman, Jack L.

1997 Preface: *Changing the Plains Archaic*. In, *Changing Perspectives of the Archaic on the Northwest Plains and Rocky Mountains*. Edited by Mary Lou Larson and Julie E. Francis. University of South Dakota Press: Vermillion, South Dakota.

Husted, W.M., and Edgar, R.

2002 *The Archeology of Mummy Cave, Wyoming: An Introduction to Shoshonean Prehistory*. Midwest Archeological Center Special Report No. 4, and Southeast Archeological Center Technical Report Series No. 9, National Park Service, Lincoln, Nebraska. Manuscript on file at the Midwest Archeological Center, Lincoln, Nebraska. -Hoffman, J.J.

Janetski, Joel C.

1987 *Indians of Yellowstone Park*. University of Utah Press, Salt Lake City

2002 *Indians in Yellowstone National Park*, revised edition, University of Utah Press, Salt Lake City.

Jerde, Tom.

1987 Prehistoric Pottery in the Upper Yellowstone Valley Area. *Archaeology in Montana* 28(1): 55-68.

Johnson, Ann

2003 48YE934 Site Form. Updated From 1997 Harebell Snowshoe Cabin Site Form. On file at the Wyoming State Historic Preservations Office, Cultural Records Office, Laramie, Wyoming.

Johnson, Ann M. and Brian O.K. Reeves

2013 *Summer on Yellowstone Lake 9300 Years Ago: The Osprey Beach Site*. Plains Anthropologist Memoir 41, 227-228: 1-192.

Johnson, Ann, Brian O.K. Reeves, and Mack W. Shortt.

2004 *Osprey Beach: A Cody Complex Camp on Yellowstone Beach* Lifeways of Canada, Calgary, Alberta, Canada.

Kornfeld Marcel, Michael Harkin, and J. Durr

2001 Landscapes and the Peopling of the Americas. In *On Being First: Cultural Innovation and Environmental Consequences of First Peopling*, edited by J. Gillespie, S. Tapakka, and C. G. deMille, pp. 149-162. University of Calgary.

Lahren, Larry A.

2006 *Homeland: An Archaeologist's View of Yellowstone Country's Past*. Cayuse Press, Livingston, Montana.

Larson, Mary Lou and Julie E. Francis, editors.

1997 *Changing Perspectives of the Archaic on the Northwest Plains and Rocky Mountains*. University of South Dakota Press: Vermillion, South Dakota.

Livers, Michael C.

2011 *Airport Rings: Stone Circle Archaeology in the Gardiner Basin, Montana*. *Yellowstone Archaeology: Northern Yellowstone*. UM Contributions to Anthropology 13(1): 72-98.

2012 2011 Class III Archaeological Investigations near Madison Junction, Norris Geyser Basin, and Apollinaris Springs, Yellowstone National Park, Wyoming. Report submitted by University of Montana, Missoula, to Yellowstone National Park, Mammoth Hot Springs, Wyoming.

Livers, Michael C. and Douglas H. MacDonald

2010 *Airport Rings: Stone Circle Archaeology in Yellowstone National Park*. Report submitted to Yellowstone National Park by the University of Montana, Missoula.

2012 2010-2011 University of Montana East Shore Yellowstone Lake Survey, Yellowstone National Park Survey, Yellowstone National Park, Wyoming. Final report submitted by University of Montana to Yellowstone National Park, Mammoth Hot Springs, Wyoming.

Livers, Michael C., Douglas H. MacDonald, Steve Sheriff, Robin Park.

2010 Fishing Bridge RV Park Electric Utility Upgrade Project, Yellowstone Lake, Yellowstone National Park, Wyoming. Report on file YNP Cultural Records Office.

MacDonald, Douglas H.

1999 Modeling Folsom Mobility, Mating Strategies, and Technological Organization in the Northern Plains. *Plains Anthropologist* 44(168):141-161.

2008 2007 Montana-Yellowstone Archaeological Project (MYAP) Final Inventory and Evaluation Report. Yellowstone National Park, Mammoth, Wyoming.

2010 The Evolution of Folsom Fluting. *Plains Anthropologist* 55(213): 39-54.

2012 *Montana Before History: 11,000 Years of Hunter-Gatherers in the Plains and Rockies*. Mountain Press Publishing Company, Missoula.

2013a 2010-2013 Montana Yellowstone Archaeological Project, Evaluation of Sites along the South Shore, Yellowstone Lake, Wyoming, Volume 1, Site Results. Draft Report submitted to Yellowstone National Park by University of Montana, Missoula.

2013b Early and Middle Holocene Hunter-Gatherers at the Fishing Bridge Point Site, Northern Yellowstone Lake. *Yellowstone Archaeology: Southern Yellowstone*, edited by D. MacDonald and E. Hale. University of Montana Department of Anthropology Contributions to Anthropology 13(2): 76-91

2014 Deciphering Point-of-Origin for Prehistoric Hunter-Gatherers at Yellowstone Lake, Wyoming: A Case Study in Lithic Technology and Settlement Pattern Studies. In *Lithics in the West*, pp. 142-160, edited by D. MacDonald, W. Andrefsky, and P. Yu. University of Montana Press, Missoula.

MacDonald, D.H., Jannifer Gish, and Richard Hughes

2011 Late Paleoindian versus Early Archaic Occupation of Yellowstone Lake, Wyoming. *Current Research in the Pleistocene* 28: 110-111.

MacDonald, D.H., Jannifer Gish, Steven Sheriff, and Michael Livers

2012 Fishing Bridge Point (48YE381): A Stratified Prehistoric Site on the Northwestern Shore of Yellowstone Lake, Wyoming. *Plains Anthropologist* 57(223): 259-271.

MacDonald, Douglas H. and Elaine S. Hale (editors)

2011 *Yellowstone Archaeology: Northern Yellowstone*. University of Montana Contributions to Anthropology 13 (1), University of Montana, Missoula.

2013 *Yellowstone Archaeology: Northern Yellowstone*. University of Montana Contributions to Anthropology 13 (2), University of Montana, Missoula.

MacDonald, Douglas H. and M. C. Livers

2012 2009-2010 Montana Yellowstone Archaeology Project, Survey and Evaluation of Sites along Yellowstone Lake's Northwest Shore. Report submitted by the University of Montana to Yellowstone National Park, Mammoth, Wyoming.

MacDonald, Douglas H. and Lester E. Maas

2010 The Yellowstone Bank Cache Site (24YE355): A Late Archaic Pelican Lake Occupation on the Upper Yellowstone River. *Archaeology in Montana*: 1-24.

2011 Late Archaic Lithic Technology and Land Use within the Gardiner Basin, Upper Yellowstone River, Montana/Wyoming. *Yellowstone Archaeology: Northern Yellowstone*. UM Contributions to Anthropology 13(1): 56-71

Madsen, David B. and Michael B. Metcalf.

2000 *Intermountain Archaeology*. University of Utah Press, Salt Lake City.

Marcus, Andrew, and James Meacham, Ann Rodman, Alethea Steingisser

2012 *Atlas of Yellowstone*. University of California Press. Los Angeles, California.

Meltzer, David J.

1999 Human Responses to Middle Holocene (Altithermal) Climates on the North American Great Plains. *Quaternary Research* 52: 404-416.

Mooney, J.

1979 *Calendar History of the Kiowa Indians*. University Press, Smithsonian Washington, D.C.

Mulloy, W.

1958 *A Preliminary Historical Outline for the Northwestern Plains*. Laramie, WY: University of Wyoming Publications, Publications in Science, 22(1)

Nabokov, Peter and Lawrence Loendorf.

2002 *American Indians and Yellowstone National Park*, National Park Service, Yellowstone Center for Resources, Yellowstone National Park, Wyoming.

National Park Service.

- 1983 National Register of historic Places Inventory- Nomination Form. Huckleberry Mountain Fire Lookout, Bridger-Teton National Forest.
- 1991 Natural Resource Management Guidelines, NPS 77. U.S. Government Printing Office, Washington D.C.
- 1993 *Archaeological Treatment Plan for Yellowstone Federal Highway Projects, Yellowstone National Park, Wyoming: Prehistoric Sites*. On file, National Park Service, Midwest Archaeological Center, Lincoln.
- 1999 *Yellowstone National Park Cultural Sites Inventory*. National Park Service, Midwest Archeological Center. Ms. On file at National Park Service, Midwest Archeological Center, Lincoln, Nebraska
- 2010 <http://www.nps.gov/yell/naturescience/plants.htm> Accessed 10/7/10
- 2015 <http://nps.gov/yell/learn/nature/moose.htm> Accessed 27/5/15

Norris, P. W.

- 1880 Annual Report of the Superintendent of the Yellowstone National Park to the Secretary of the Interior. US Government Printing Office, Washington, D.C.
- 1882 5th Annual Report of the Superintendent of the Yellowstone National Park. Report of the Secretary of the Interior 47th congress , 1st session. Washington, D.C.

Osborn, Alan J.

- 1993 Snowblind in the Desert Southwest: Moisture Islands, Ungulate Ecology, and Alternative Prehistoric Overwintering Strategies. *Journal of Anthropological Research* 49(2): 135-164.

Perry, R. J.

- 1980 The Apachean Transition from the Subarctic to the Southwest. *Plains Anthropologist* 25(90): 279-296.

Reeve, S.A.

- 1989 *Prehistoric Settlement of the Yellowstone Lake Outlet*. Midwest Archeological Center, National Park Service.

Reeves, B. O. K.

- 1973 The Concept of an Altithermal Cultural Hiatus in Northern Plains Prehistory. *American Anthropologist* 75: 1221-1253

Reeves, B., Doug Mitchell, Kevin Thorson, and Visit Kjar.

2006 1998 Archaeological Inventory East Side of the Yellowstone River Fishing Bridge-Grand Canyon. On file, Cultural Records, Yellowstone National Park.

Reiss, David

2001 48YE1567 Site Form. On file at the Wyoming State Historic Preservations Office, Cultural Records Office, Laramie, Wyoming

Sanders, Paul H.

2001a 48YE823 Site Form. On file at the Wyoming State Historic Preservations Office, Cultural Records Office, Laramie, Wyoming

2001b 48YE1268/48TE1568 Site Form. On file at the Wyoming State Historic Preservations Office, Cultural Records Office, Laramie, Wyoming

2001c Prehistoric Land-Use Patterns within the Yellowstone Lake Basin and Hayden Valley Region, Yellowstone National Park, Wyoming. *Proceedings of the 6th Biennial Conference, George Wright Society.*

2013 A Reassessment of prehistoric Land-use Patterns within the Yellowstone Lake Basin and Hayden Valley Region, Yellowstone National Park. In *Yellowstone Archaeology: Southern Yellowstone*, edited by D. MacDonald and E. Hale. University of Montana Contributions to Anthropology 13 (2): 22-41.

Sanders, Paul, Richard Adams, and Dale Wedel

1996 The 1995 Class III Cultural Resource Inventory of the Northern Portion of the Canyon Junction to Lake Junction Road, Yellowstone National Park, Wyoming. On file, Yellowstone National Park, Wyoming.

Sanders, Paul H., and Dale L. Wedel.

1997 *The 1996 Class III Cultural Resource Inventory of the Bridge Bay to Lake Junction Road, Yellowstone National Park, Project 785D(254H).* Office of the Wyoming State Archaeologist. Prepared for the National Park Service, Rocky Mountain Region, Denver. On file, Wyoming State Historic Preservation Office, Cultural Records Office, Laramie, Wyoming

Shortt, Mack W.

1999a *The Archaeological Assessment of Site 24YE344, Yellowstone National Park: Final Report.* Montana State University, Museum of the Rockies. On File, National Park Service, Branch of Cultural Resources, Yellowstone National Park, Mammoth.

- 1999b *Yellowstone National Park FHWA Mammoth-Gardiner Road Archaeological Site Inventory: 1998 Field Season Final Report*. Montana State University, Museum of the Rockies. On file, National Park Service, Branch of Cultural Resources, Yellowstone National Park, Mammoth.
- 1999c YNP FHWA Archaeological Site Inventory-East Side of the Canyon to Fishing Bridge Segment of the Grand Loop Road: 1998 Field Season Final Report. NPS, YNP, WY.
- 2001 The Osprey Beach Locality: A Cody Complex Occupation on the South Shore of the West Thumb. *Proceedings of the 6th Biennial George Wright Society Conference*.

Shortt, M. W. and L. B. Davis, editor.

- 2002 *The Archeological Inventory of Portions of the south Shore of West Thumb and Testing of the Osprey Beach Locality, Yellowstone National Park: The 2000 Field Season Final Report*. Museum of the Rockies, Bozeman, Montana.

Shullery, P.

- 1997 Searching for Yellowstone: ecology and wonder in the last wilderness. Houghton-Mifflin, Boston, Massachusetts, USA.

Smith, Craig S., Lance M. McNeese.

- 1999 Facilities and Hunter-Gatherer Long-Term Land Use Patterns: An Example from Southwest Wyoming. *American Antiquity* 64(1): 117-136.

Taylor, D.C., K. Wood and J.J. Hoffman.

- 1964 *Preliminary Archeological Investigation in the Yellowstone National Park*, Montana State University, Missoula, Montana.

Vivian, Brian C., D. Mitchell, and K. Thorson.

- 2007 *Archaeological Inventory of Yellowstone Lake Shoreline Survey Solution Creek to Southeast Arm*. Manuscript on file. Yellowstone National Park, Mammoth Hot springs, Wyoming.

Vivian, Brian C., Brian O.K. Reeves, and Ann Johnson

- 2008 Historical Resources Mitigative Excavations at Site 24YE353, Malin Creek Site Final Report. Report submitted by Lifeways of Canada to Yellowstone National Park, Mammoth Hot Springs, Wyoming.

Voget, F. W.

- 1984 *The Shoshoni-Crow Sundance*, University of Oklahoma, Norman.

Walthall, John A.

1998 Rochshelters and Hunter-Gatherer Adaptation to the Pleistocene/Holocene Transition. *American Antiquity* 63(2): 223-238.

Williams, Lloyd

1977a 48YE490 Site Form. On file at the Wyoming State Historic Preservations Office, Cultural Records Office, Laramie, Wyoming

1977b 48YE491 Site Form. On file at the Wyoming State Historic Preservations Office, Cultural Records Office, Laramie, Wyoming

1977c 48YE492 Site Form. On file at the Wyoming State Historic Preservations Office, Cultural Records Office, Laramie, Wyoming

1977d 48YE493 Site Form. On file at the Wyoming State Historic Preservations Office, Cultural Records Office, Laramie, Wyoming

1977e 48YE494 Site Form. On file at the Wyoming State Historic Preservations Office, Cultural Records Office, Laramie, Wyoming

1977f 48YE495 Site Form. On file at the Wyoming State Historic Preservations Office, Cultural Records Office, Laramie, Wyoming

1977g 48YE496 Site Form. On file at the Wyoming State Historic Preservations Office, Cultural Records Office, Laramie, Wyoming

1977h 48YE497 Site Form. On file at the Wyoming State Historic Preservations Office, Cultural Records Office, Laramie, Wyoming

Wolfe, S.A., J. Ollerhead, D.J. Huntley, and O.B. Lian

2006 Holocene Dune Activity and Environmental Change in the Prairie Park and Boreal Forest, Central Saskatchewan, Canada. *The Holocene* 16(1): 17-29.

Wright, G.A.

1973 48TE428 Site Form. On file at the Wyoming State Historic Preservations Office, Cultural Records Office, Laramie, Wyoming

1978 The Shoshonean Migration Problem. *Plains Anthropologist* 23:113-137

1984 *People of the high country, Jackson Hole before the settlers*. Peter Lang Publishing, N.Y. 181pp.

Wright, Gary, Thomas Marceau, F.A. Calabrese and Melodie Tune

1978 Greater Yellowstone Cooperative Regional Transportation Study; Regional Assessment
Archaeological Report. On file at the Midwest

Wright, Gary, Robert Proulx, and Thomas Koenig

1984 A Native American Burial from 48YE1, Fishing Bridge Peninsula, Yellowstone National Park.
Manuscript on file Yellowstone National Park Library.

Yansa, Catherine H.

2007 Lake Records of Northern Plains Paleoindian and Early Archaic Environments: The "Park Oasis"
Hypothesis. *Plains Anthropologist* Vol. 52 No. 201 109 – 144.

